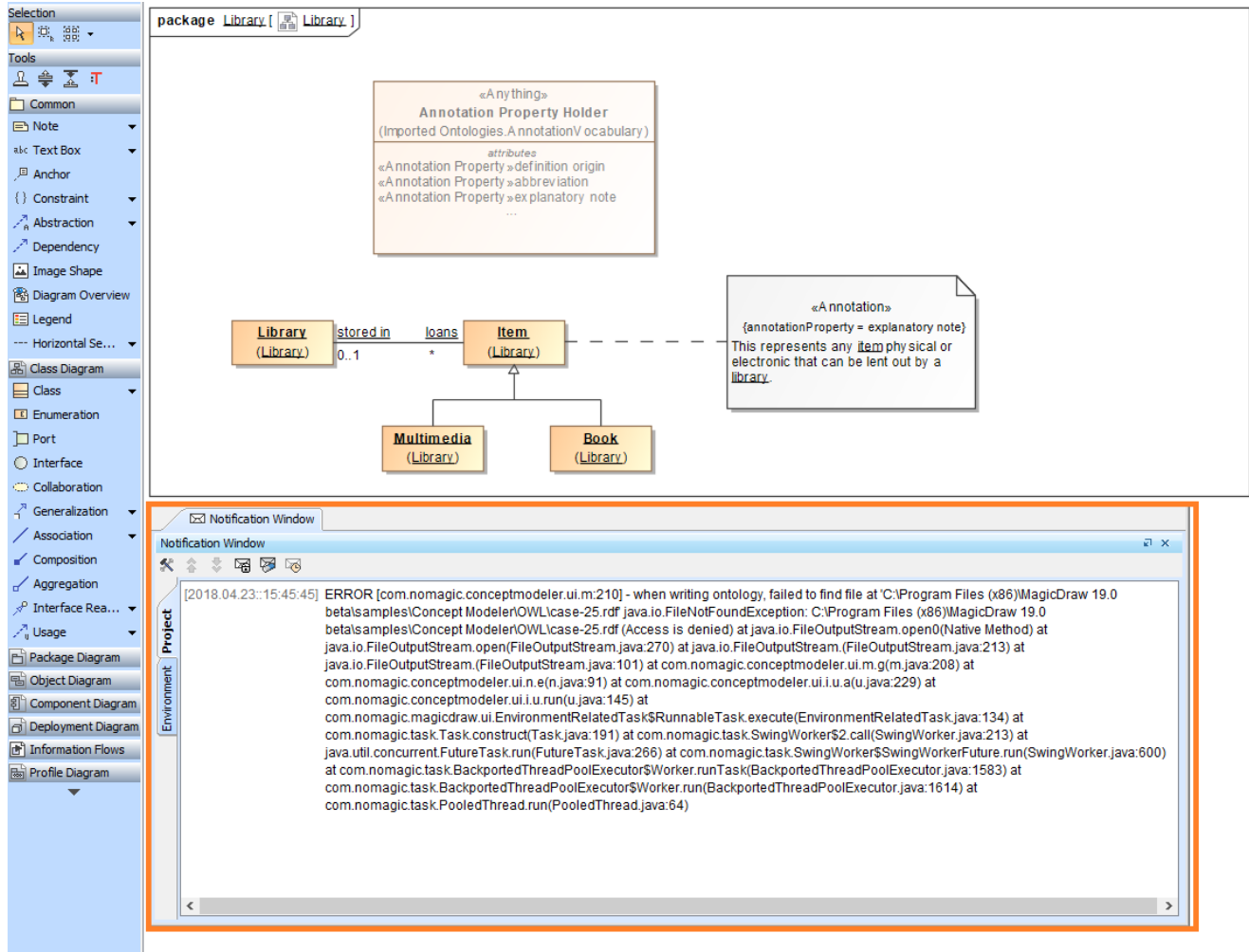


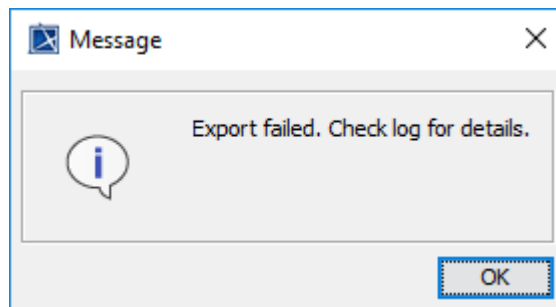
# Logging during OWL importing and exporting

When you import an OWL ontology file as a concept model or export a concept model as an OWL ontology file, an Information Log appears in the **Notification Window** that provides helpful information regarding the details of the import and export. Some examples include the operations that the Concept Modeler is performing, any problems it has encountered during import and export, and details about the result of the import and export whether or not it was completed successfully.

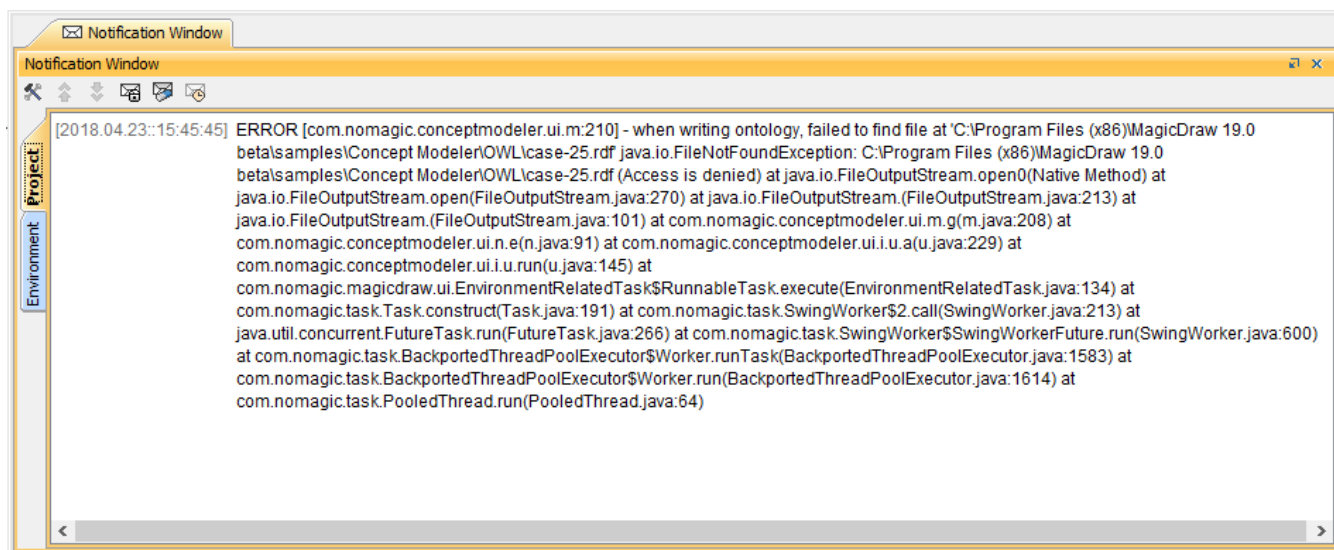


The log detail in the Notification Window at the bottom of the diagram.

The details of some fatal errors during import and export, e.g., a denied access or permission to export the file, are displayed in the log. This prompts the message dialog informing you of the result of the export, as shown in the following figures.

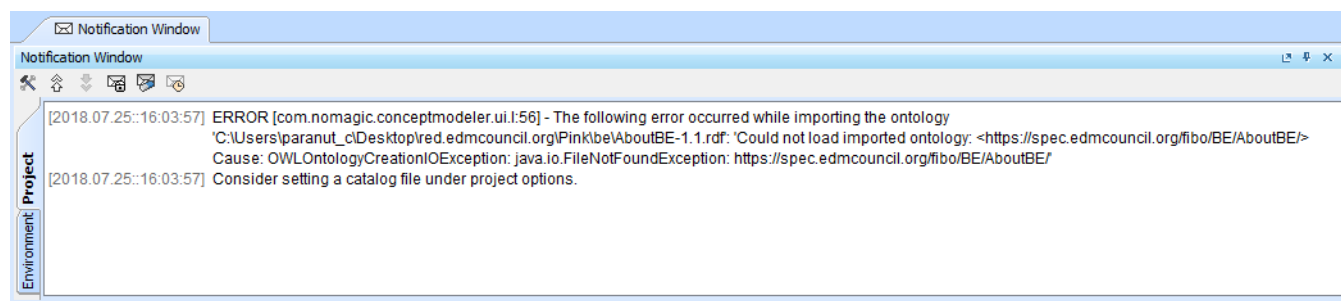


The message dialog showing the result of the export.



The Notification Window showing the denied access when exporting a concept model.

Some errors displayed in the log do not allow the importing process to be completed, as shown below. The **Notification Window** showing the error of setting a catalog file indicates that the ontology import was unsuccessful.



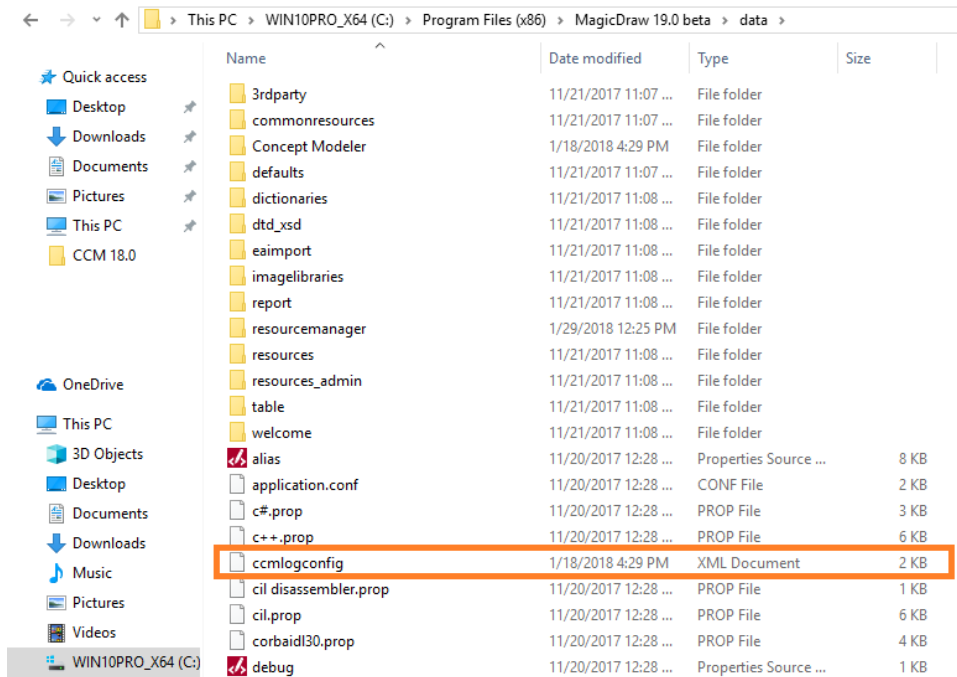
The importing error of setting a catalog file is explained in the log in the Notification Window.

### Increasing and decreasing log levels

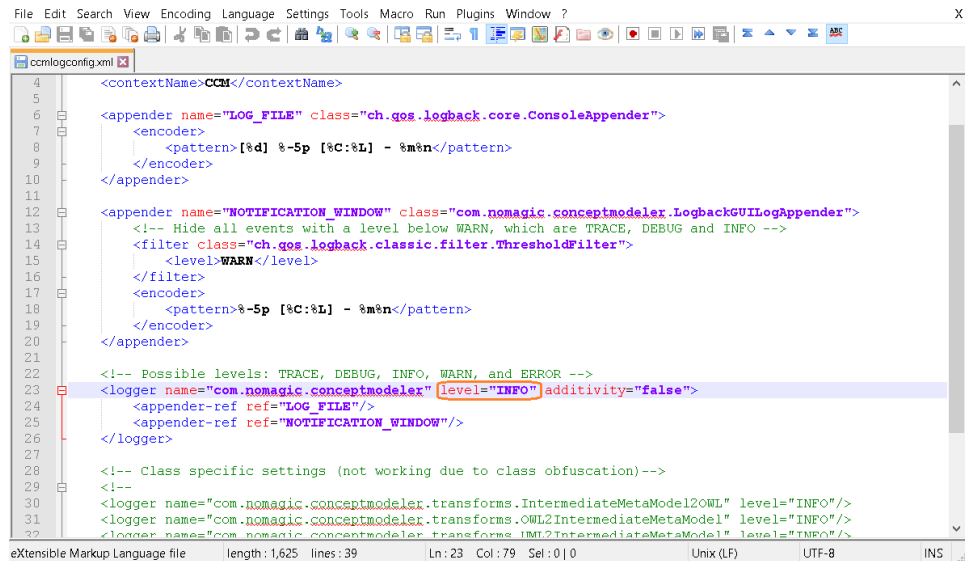
Apart from using log information to see the result of the import or export and diagnose any arising problems, you can increase or decrease log levels to customize the scope levels of log information displayed in the **Notification Window**. You can change the log level in **ccmlogconfig.xml** which is located in the MagicDraw installation folder.

To increase or decrease log level

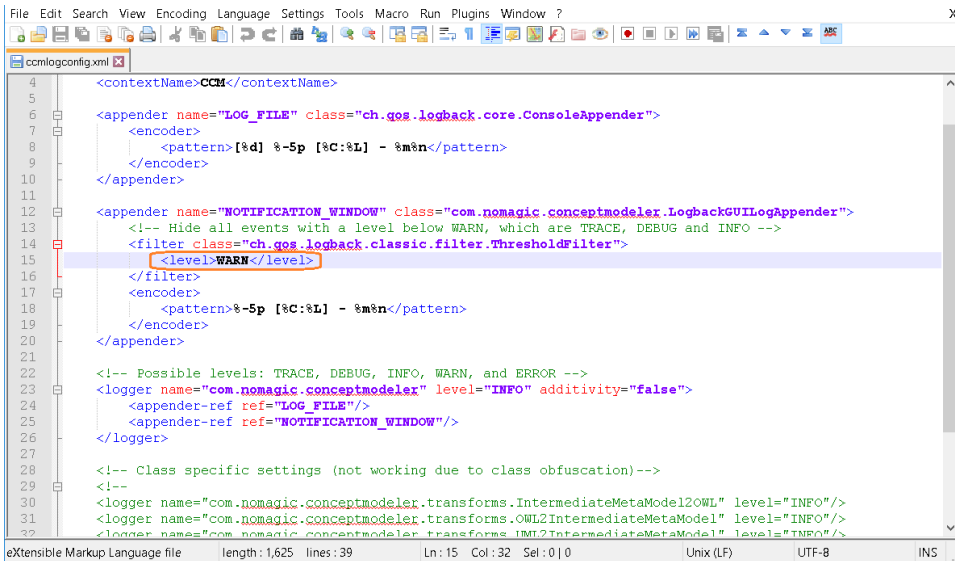
1. In the MagicDraw installation folder, open the **data** directory.
2. Open **ccmlogconfig.xml** with any text editors. (We recommend Notepad++)



3. If you would like to change the log level of the **Log File**, change the log level, which is shown on the highlighted line, to one of the five levels indicated in the comment above the line: **TRACE**, **DEBUG**, **INFO**, **WARN**, or **ERROR**. It does not affect the log level of the **Notification Window**.



4. If you would like to change the log level of the **Notification Window**, change the log level, which is shown on the highlighted line, to one of the five levels indicated in the comment above the line: **TRACE**, **DEBUG**, **INFO**, **WARN**, or **ERROR**. It does not affect the log level of the **Log File**.



```
4 <contextName>CCM</contextName>
5
6 <appender name="LOG_FILE" class="ch.qos.logback.core.ConsoleAppender">
7   <encoder>
8     <pattern>[%d] %-5p [%C:%L] - %m%n</pattern>
9   </encoder>
10 </appender>
11
12 <appender name="NOTIFICATION_WINDOW" class="com.nomagic.conceptmodeler.LogbackGUILogAppender">
13   <!-- Hide all events with a level below WARN, which are TRACE, DEBUG and INFO -->
14   <filter class="ch.qos.logback.classic.filter.ThresholdFilter">
15     <level>WARN</level>
16   </filter>
17   <encoder>
18     <pattern>%-5p [%C:%L] - %m%n</pattern>
19   </encoder>
20 </appender>
21
22 <!-- Possible levels: TRACE, DEBUG, INFO, WARN, and ERROR -->
23 <logger name="com.nomagic.conceptmodeler" level="INFO" additivity="false">
24   <appender-ref ref="LOG_FILE"/>
25   <appender-ref ref="NOTIFICATION_WINDOW"/>
26 </logger>
27
28 <!-- Class specific settings (not working due to class obfuscation)-->
29 <!--
30 <logger name="com.nomagic.conceptmodeler.transforms.IntermediateMetaModel2OWL" level="INFO"/>
31 <logger name="com.nomagic.conceptmodeler.transforms.OWL2IntermediateMetaModel" level="INFO"/>
32 <logger name="com.nomagic.conceptmodeler.transforms.IMM2IntermediateMetaModel" level="INFO"/>
33 </-->
```

5. Save your changes, and close the **ccmlogconfig.xml** file.
6. Restart your Magic Draw application to see the changes.



#### Information

Log levels are as follows:

#### Related pages

- **TRACE** level shows all log information from the **TRACE** level to **ERROR** level.
- **DEBUG** level shows all log information from the **DEBUG** level to **ERROR** level.
- [Usage](#)
- **INFO** level, by default, shows all log information from the **INFO** level to **ERROR** level.
- **WARN** level shows all log information from the **WARN** level to **ERROR** level.
- **ERROR** level shows log information only at **ERROR** level.