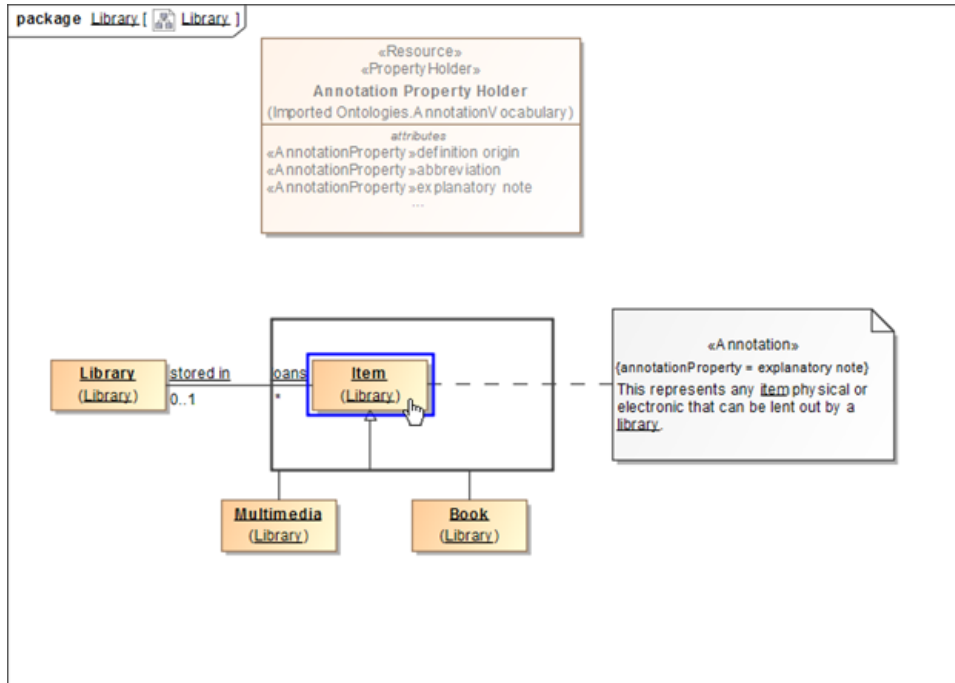


Showing an annotation in the Documentation pane

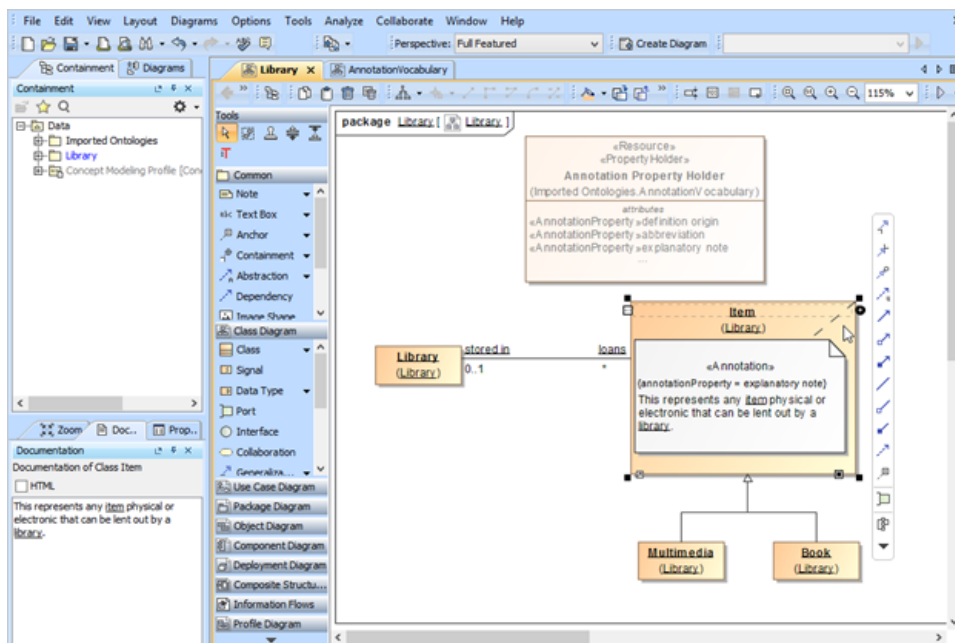
There are several ways to make an annotation for a class or a property appear in the Documentation pane any time you click the annotation in the Containment tree or in the diagram pane.

To show an annotation for a class in the Documentation pane when you click the class

1. Drag the annotation (either on the diagram or in the Containment tree) to the class. (This makes it owned by the class.)



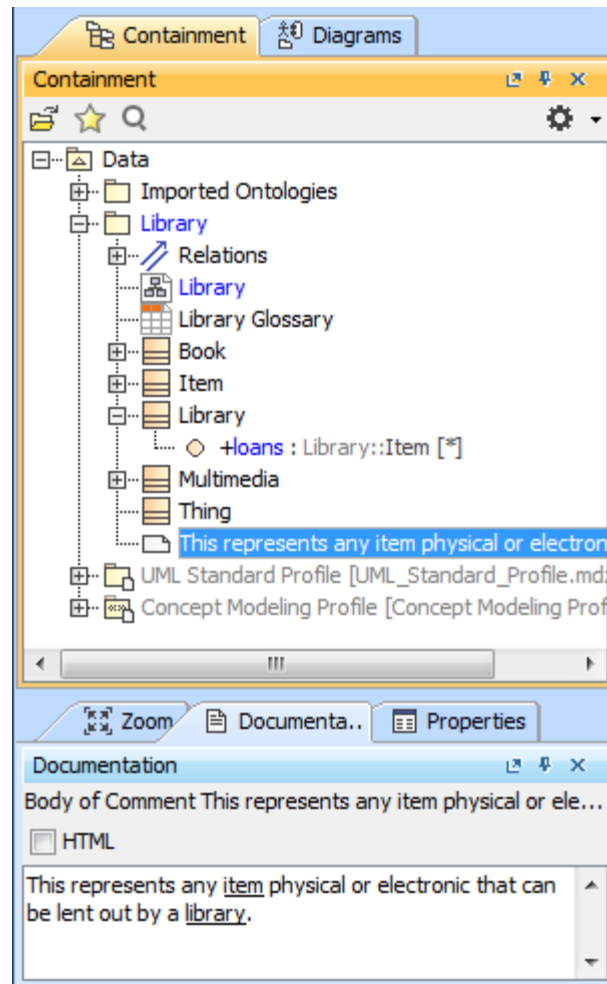
2. Click the class. The annotation will show up in the **Documentation** pane.



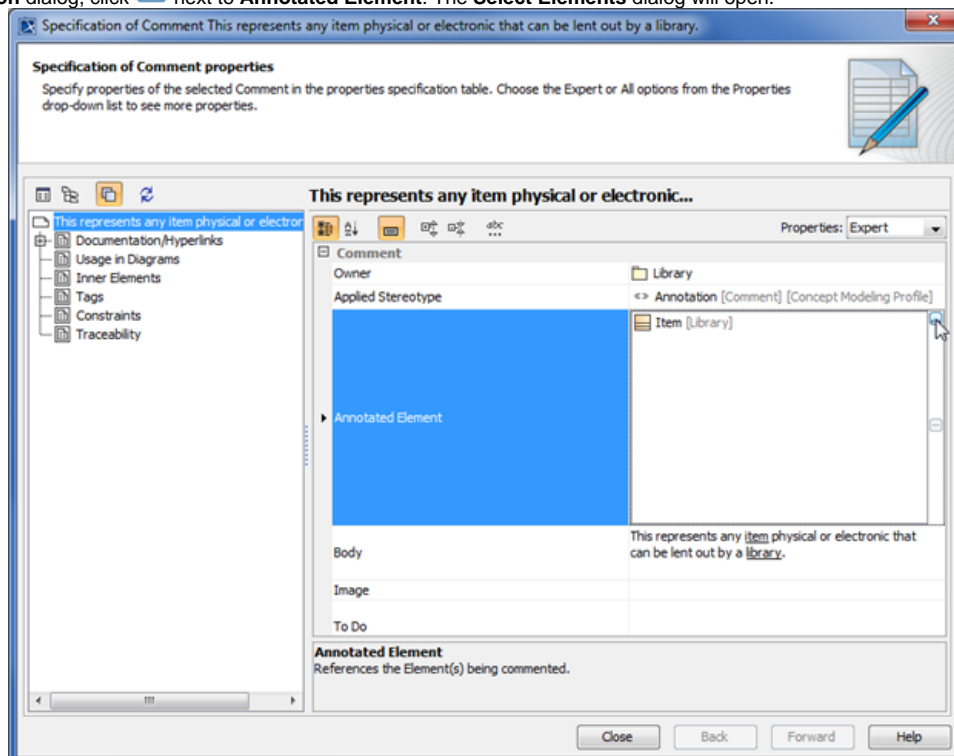
The annotation owned by the class shows in the Documentation pane.



To make an annotation for a property appear in the Documentation pane when you click the property

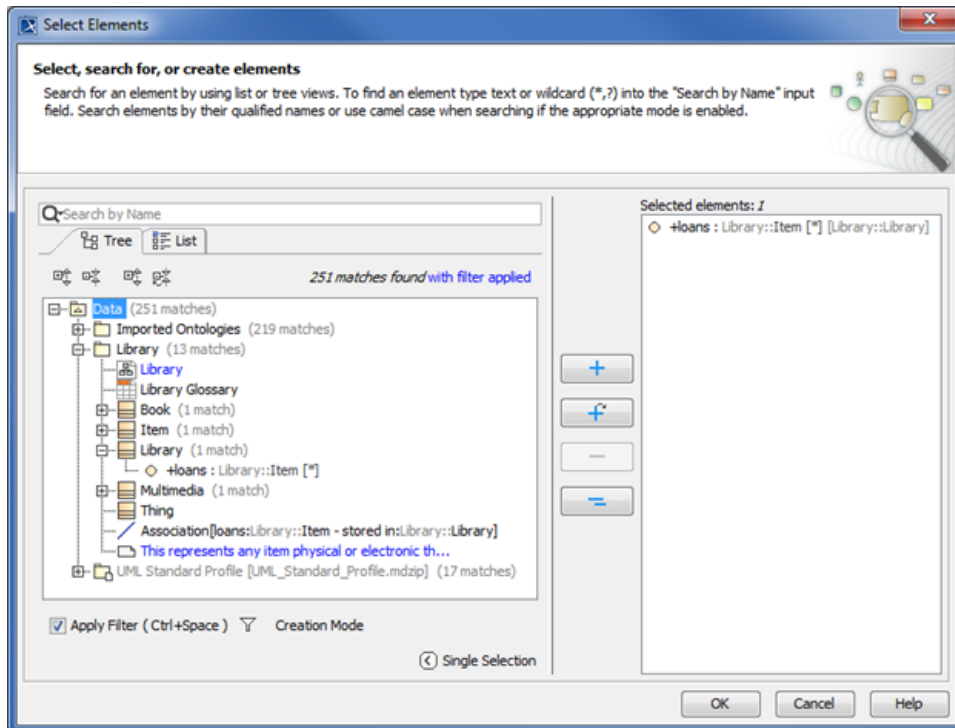
1. Double-click an annotation in the Containment tree to open its **Specification** dialog.



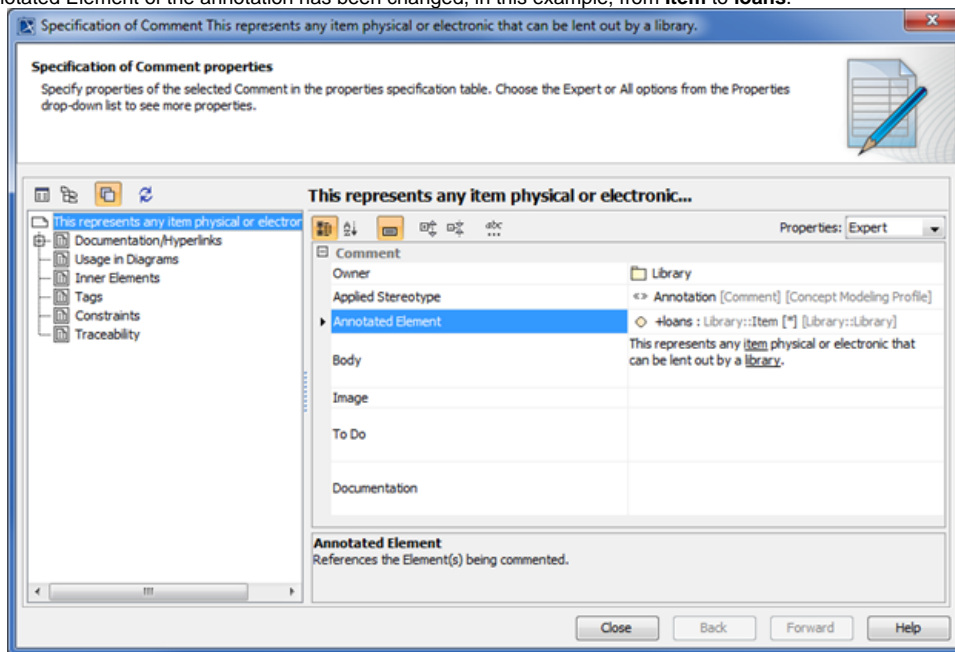
2. In the **Specification** dialog, click  next to **Annotated Element**. The **Select Elements** dialog will open.



3. To remove a Selected Element, click . To add a Selected Element, click .



- Click **OK**. The Annotated Element of the annotation has been changed, in this example, from **Item** to **loans**.



- Click **Close** to close the **Specification** dialog.



Note

- If you drag more than one annotation to a class or a property, only the first created annotation will appear in the Documentation pane and in the class' **Specification** window (under the **Documentation/Hyperlink** property).

Related pages

- An annotation for a property will appear in the **Documentation** pane only if its annotated element is set to the property and its preferred annotation property tagged value is specified or updated.



In this current release, only annotations

that have been adjusted to show in the **Documentation** pane will appear in the Natural Language Glossary.