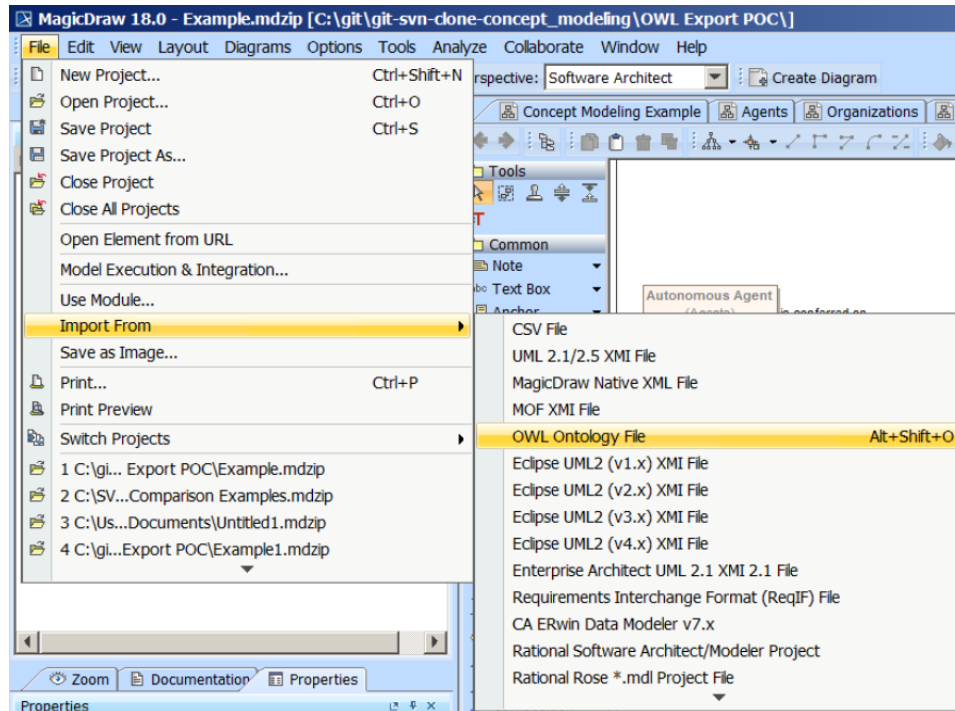


Importing an OWL ontology file

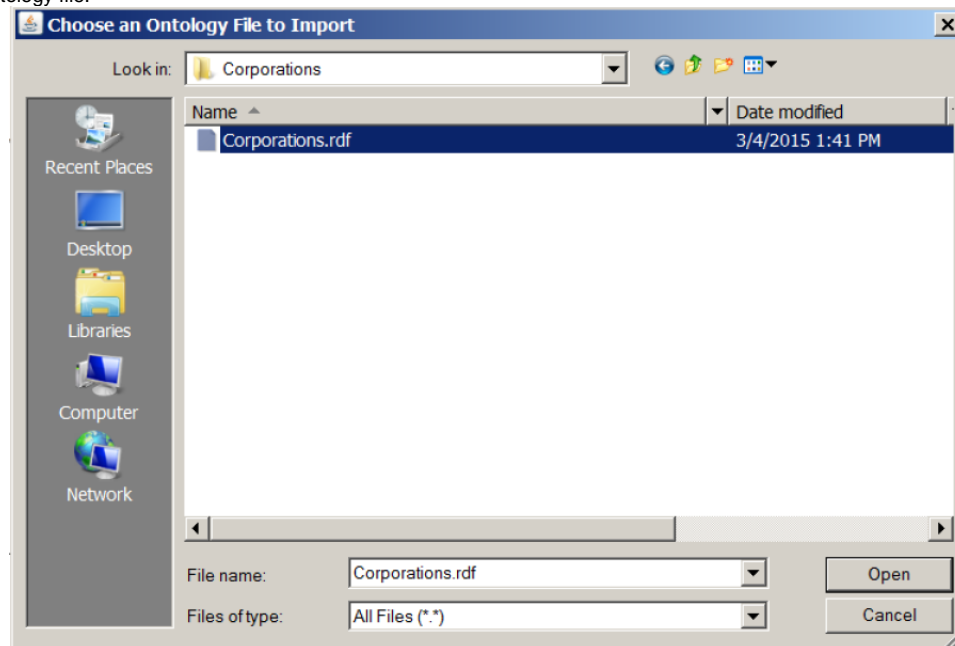
You can import an OWL ontology file (after setting the OWL import catalog, if necessary), and reuse or augment it in the Concept Modeler.

To import an OWL ontology into a concept model (after [setting the XML catalog file](#) if necessary)

1. On the main menu, click **File > Import From**. Select **OWL Ontology File**.

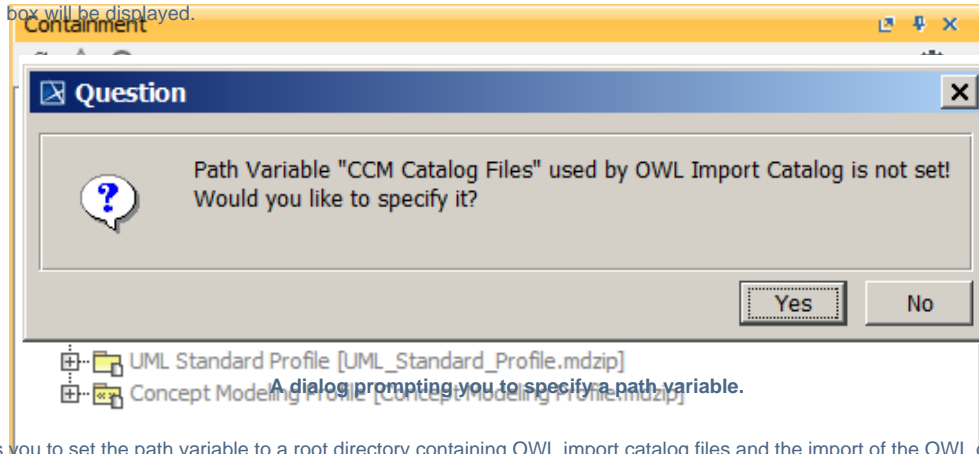


2. Browse for an ontology file.

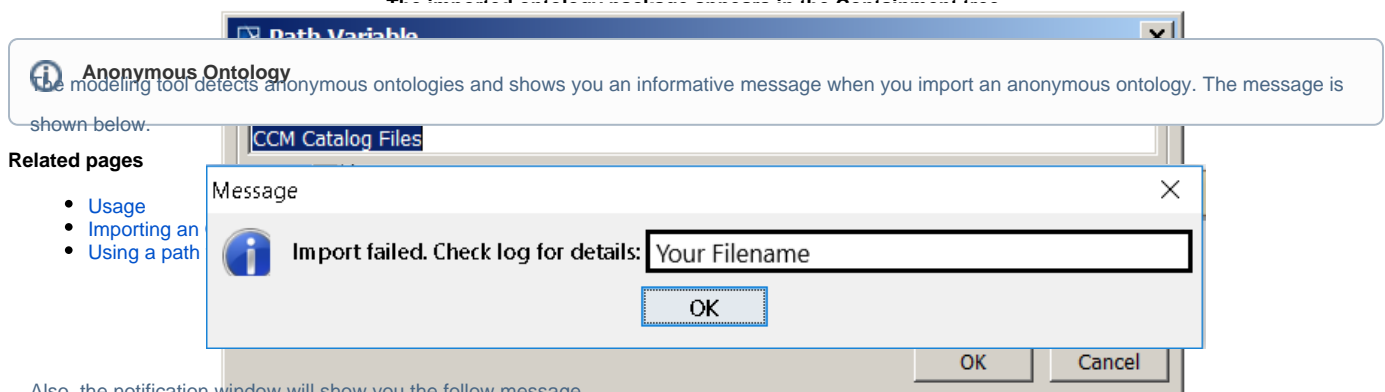


3. Click **Open**. The ontology file will be imported into the MagicDraw project.

If the OWL import catalog is set using a path variable (as described in [using a path variable to share OWL import catalog files](#)), and this path variable is not defined (as described in [setting a path variable to share OWL import catalog files](#)), the Concept Modeler will not be able to locate it. Consequently, the following dialog box will be displayed.



Clicking **Yes** allows you to set the path variable to a root directory containing OWL import catalog files and the import of the OWL ontology to proceed.



Also, the notification window will show you the follow message

WARN [com.nomagic.conceptmodeler.ui.Cameo Concept Modeler#w83] - Requested import cannot be completed as CCM does not support import of an anonymous ontology. Setting the path variable to the OWL import catalog files.