

# Exporting your concept model



## Foreign Namespaces

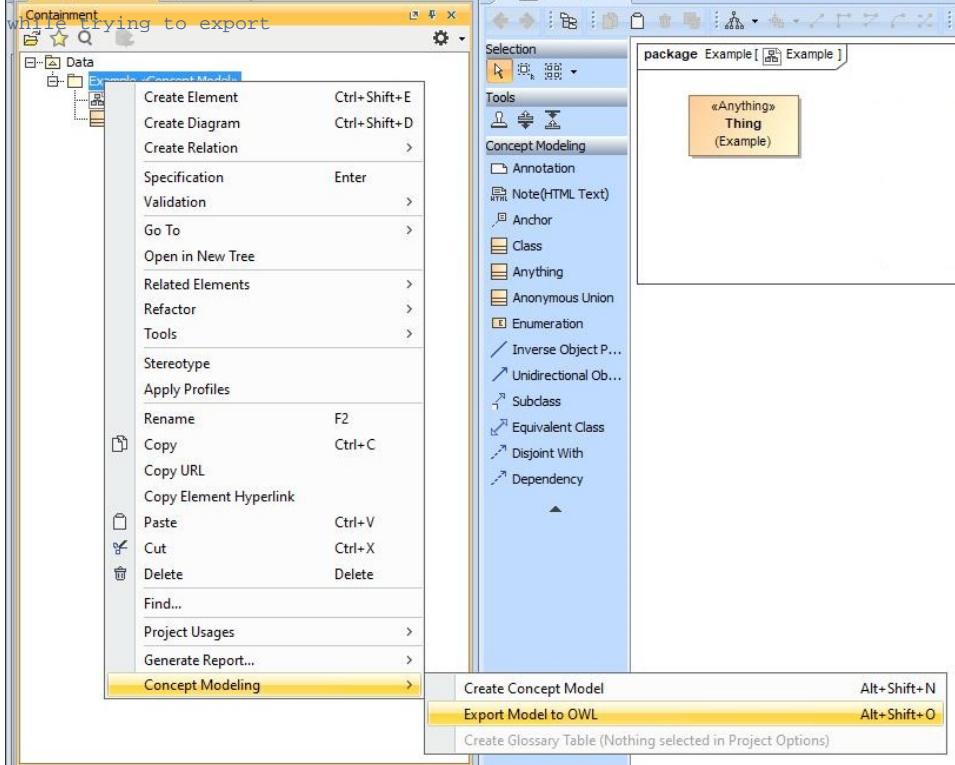
When a UML element does not share the same namespace as its owning «Model», it is now defined in the exported OWL.

Classes that are not directly owned by a package now results in an informative warning during export. The warning is similar to the following:  
To export a concept model to an OWL ontology

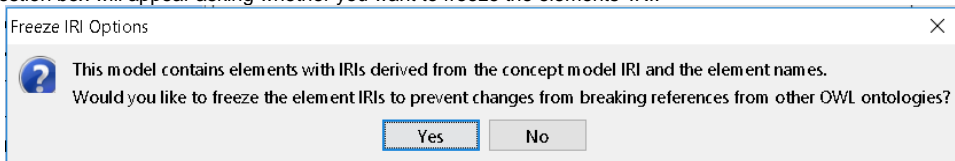
ERROR [com.nomagic.conceptmodeler.ui.i:160] - Unexpected error 'com.nomagic.uml2.ext.magicdraw.activities.mdfundamental.activities.impl.ActivityImpl cannot be cast to org.semanticweb.owlapi.model.OWLClassExpression'

1. Right-click your desired concept model in the Containment tree. Select **Concept Modeling > Export to OWL**.

occurred while trying to export



2. A question box will appear asking whether you want to freeze the elements' IRI.



a. If you click No. The notification window shows this message.

No IRIs were frozen.

b. If you click Yes. The notification window shows you which elements' IRI were frozen.

Red

White

The IRIs for the elements above are successfully frozen. Please save the changes.

3. A progress bar will appear.

4. A dialog will appear asking you to choose the folder to save the exported model into.

5. A **Path Variables** dialog will appear. The default path variable is `<project.dir>\OWL`. Choose **Use Selected**.

6. Your concept model is not export into the folder of your choice with the file extension of your choice.



## Foreign Namespaces

The exported OWL ontology file is saved in a folder named **OWL**. The **OWL** folder is created at the same location as the MagicDraw project file containing the concept model.

When a UML element does not share the same namespace as its owning «Model», it is now defined in the exported OWL.

#### Related pages

- [Usage](#)

Classes are not directly owned by a package now results in an informative warning during export. The warning is similar to the following:

- [Exporting your concept model to an OWL ontology](#)

```
ERROR [com.nomagic.conceptmodeler.ui.i:160] - Unexpected error
```

```
'com.nomagic.uml2.ext.magicdraw.activities.mdfundamentalactivities.impl.ActivityImpl
```

```
cannot be cast to org.semanticweb.owlapi.model.OWLClassExpression' occurred while trying to export
```