

# Exporting your concept model



## Foreign Namespaces

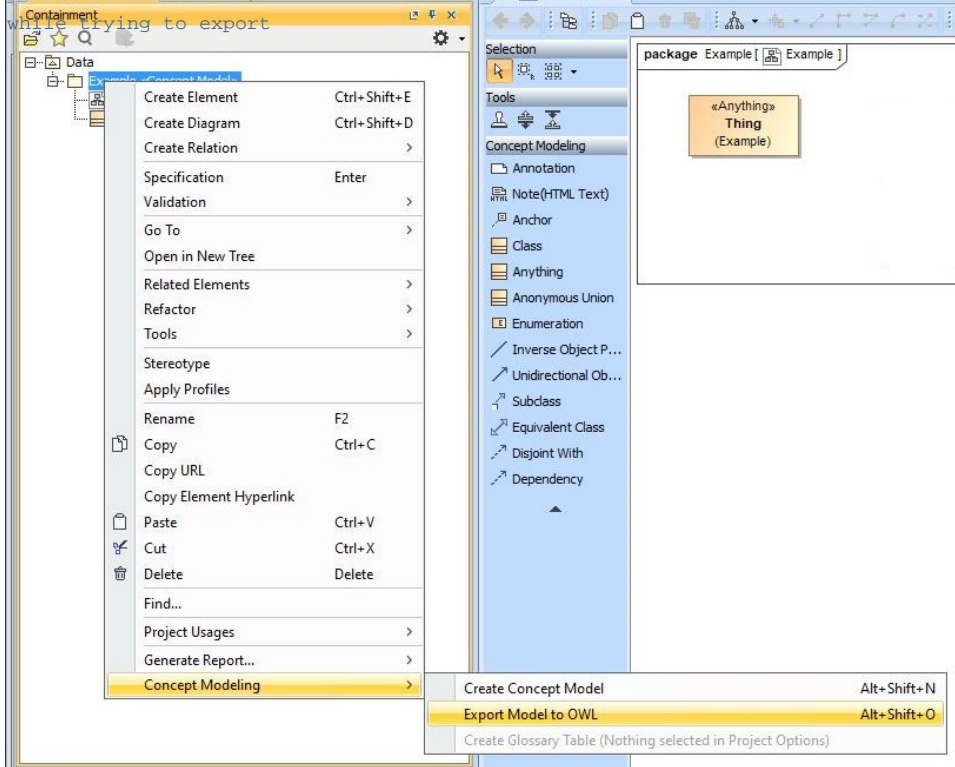
When a UML element does not share the same namespace as its owning «Model», it is now defined in the exported OWL.

Classes that are not directly owned by a package now results in an informative warning during export. The warning is similar to the following:  
To export a concept model to an OWL ontology

ERROR [com.nomagic.conceptmodeler.ui.i:160] - Unexpected error 'com.nomagic.uml2.ext.magicdraw.activities.mdfundamentalactivities.impl.ActivityImpl cannot be cast to org.semanticweb.owlapi.model.OWLClassExpression'

1. **Right-click** your desired concept model in the Containment tree. Select **Concept Modeling > Export to OWL**.

occurred while trying to export



2. A progress bar will appear.
3. A dialog will appear asking you to choose the folder to save the exported model into.
4. A **Path Variables** dialog will appear. The default path variable is `<project.dir>|OWL`. Choose **Use Selected**.
5. Your concept model is not export into the folder of your choice with the file extension of your choice.



## Foreign Namespaces

When a UML element does not share the same namespace as its owning «Model», it is now defined in the exported OWL.

Classes that are not directly owned by a package now results in an informative warning during export. The warning is similar to the following:  
The exported OWL ontology file is saved in a folder named **OWL**. The **OWL** folder is created at the same location as the MagicDraw project file containing the concept model.

ERROR [com.nomagic.conceptmodeler.ui.i:160] - Unexpected error

### Related pages

- [Usage](#)
- [Exporting your concept model to an OWL ontology](#)

cannot be cast to org.semanticweb.owlapi.model.OWLClassExpression' occurred while trying to export