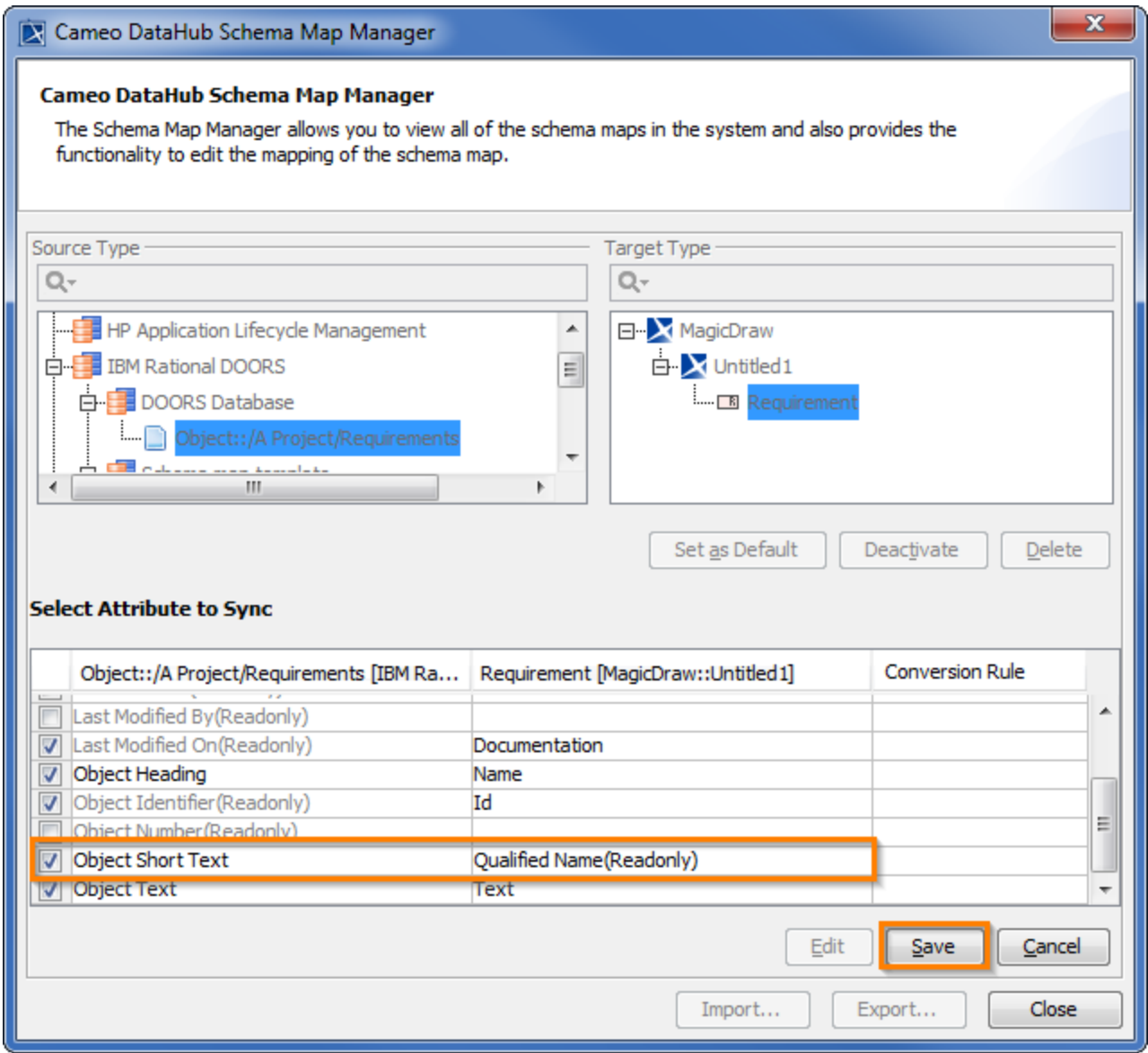


Synchronizing changes in schema mapping

You can also synchronize updates on a schema map when you perform the data synchronization. If you change a schema map, synchronization applies the changes in the schema map to the affected nodes.

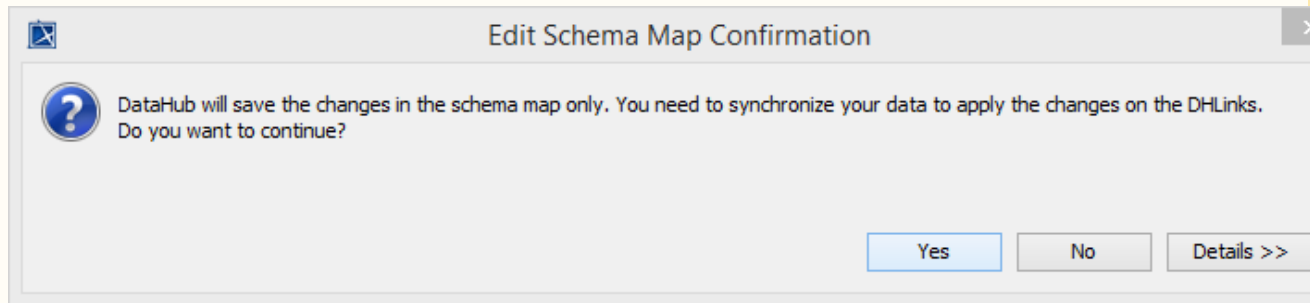


The Schema Map Manager for synchronizing schema mapping.



Note

After you update the schema map, the **Edit Schema Map Confirmation** dialog opens to notify that you must synchronize the data again to synchronize the changes to the affected nodes.



The Edit Schema Map Confirmation dialog.