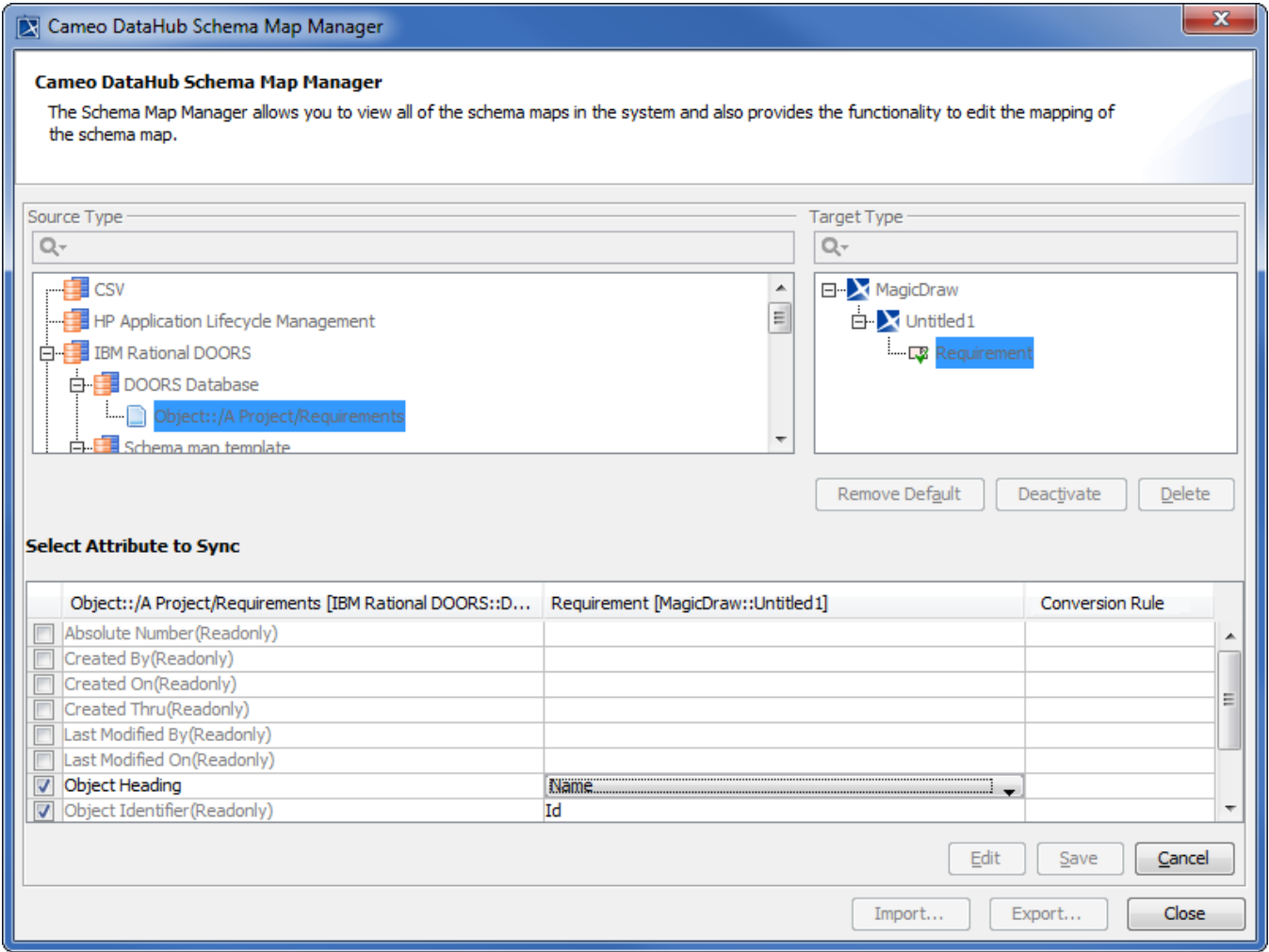


Schema Map Manager

You can use [Schema Map Manager](#) to edit attributes mapping. When the DHLinks between nodes and attributes have been created, **Schema Map Manager** saves the mapped nodes and attributes. You can edit the attribute mapping for a specific schema mapping. You can also export the mappings in the XML format and share them with other users.



Schema Map Manager.