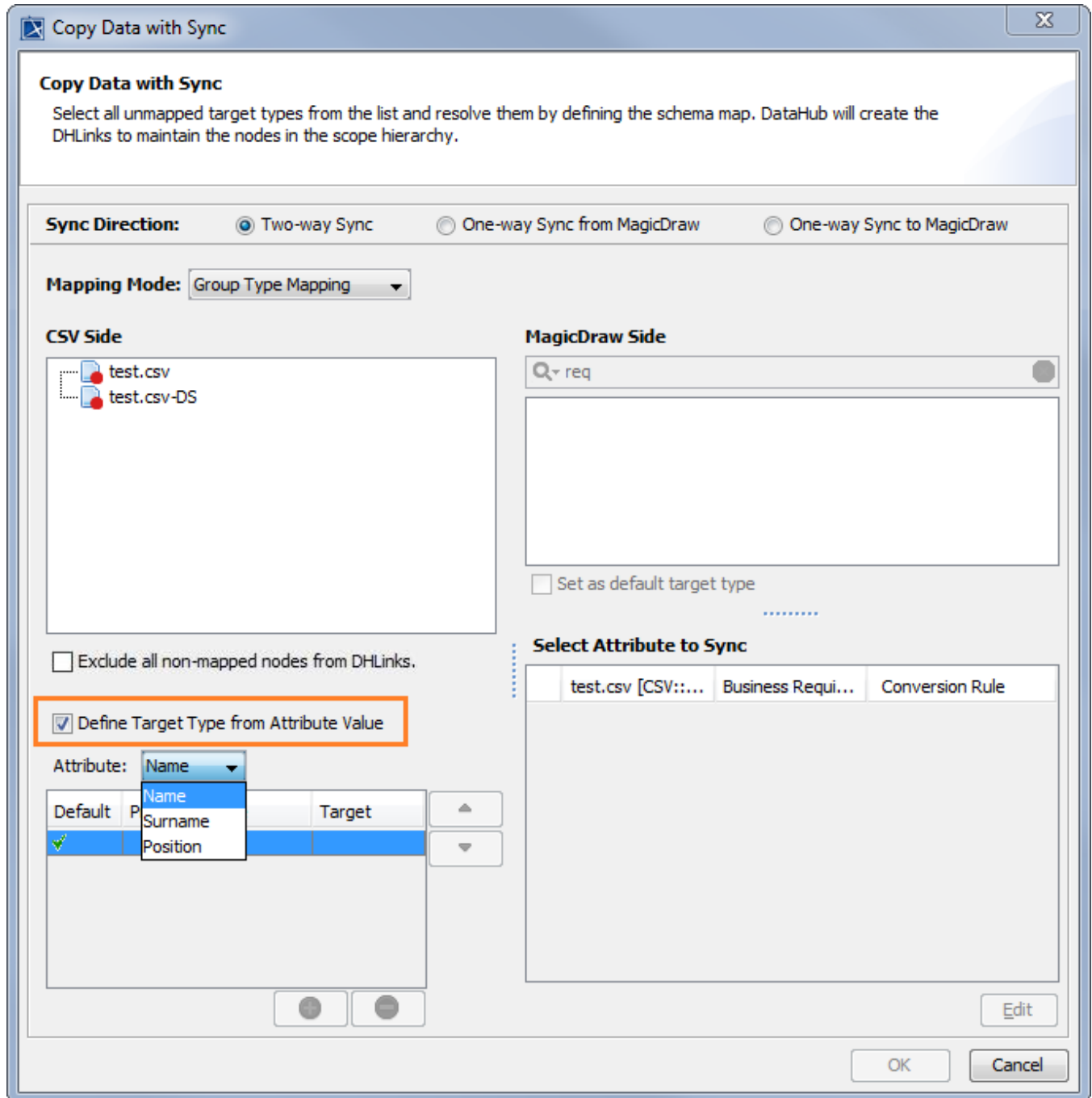


Define target type from attribute value mapping

The **Define Target Type from Attribute Value** mapping mode is the capability of specifying or defining type of nodes to map in the target by using a node's attribute value in the source as the condition. This mode is available in the **Copy Data** dialog, **Copy Data with Sync** dialog, and **Copy Data with DHTrace** dialog for the **Group Type Mapping** option. The **Define Target Type from Attribute Value** mapping mode makes it possible to select the attribute's values of a node and map them to multiple target types.



The Define Target Type from Attribute Value option in the Copy Data with Sync Dialog.