


Updating Teamwork projects

A DataHub Data Source in a Teamwork project, which is opened through Teamwork Server, is accessible to multiple clients. When multiple clients are working at the same time on the same Teamwork project that contains DHLink, DataHub shows the project and the number of clients that are using it under a single Data Source in DataHub Explorer. The Data Source shows the project that is currently open on each client's machine.

You can add a Teamwork Data Source to DataHub Explorer. You can work on the Data Source and save the changes. Other users can also do the same things you do to the same project. Therefore, the project in the Teamwork Data Source may contain different sets of data as a result of multiple updates.

As long as all clients update the changes before committing, no conflicts occurs because the DHLink map is stored on Teamwork Server along with all the project details.

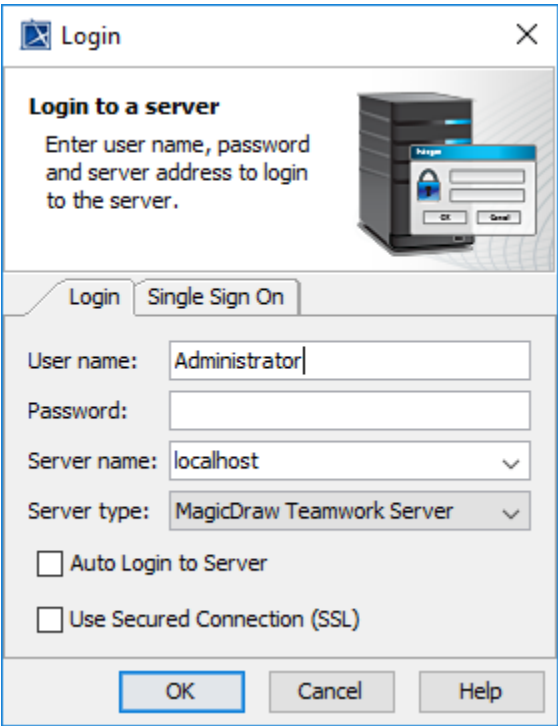


Information

For more details about setting Teamwork in MagicDraw®, see the MagicDraw® User Guide.

To log on to Teamwork Server

1. On the MagicDraw® main menu, click **Collaborate > Login**. The **Login** dialog opens.



2. Enter all the server connection parameters.
3. Click **OK**.

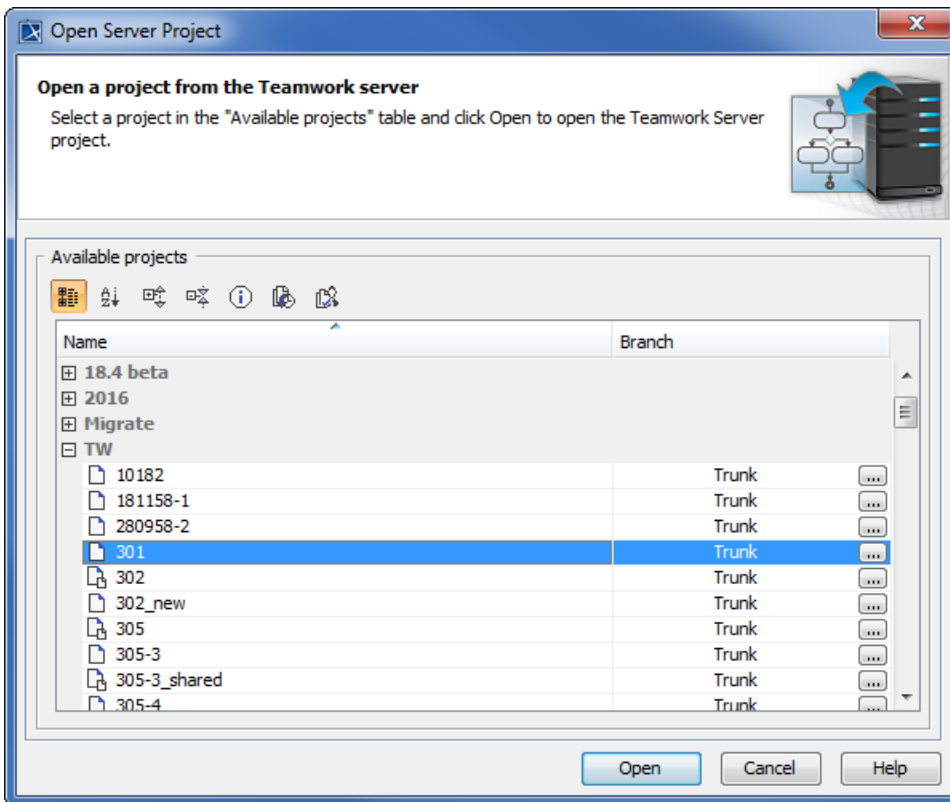
The table below explains about each connection parameter.

Parameter Name	Function
User name	Specifies a user name to connect to Teamwork Server.
Password	Specifies a password to connect to Teamwork Server.
Server name	Specifies a Teamwork Server name or IP Address.
Server type	Specifies a Teamwork Server type, MagicDraw Teamwork Server or Teamwork Cloud.
Auto Login to Server	Logs on to Teamwork Server automatically when MagicDraw® starts.

Use Secured Connection (SSL)	Turns on SSL encryption for data transfer.
OK	Confirms the connection parameters and log on to Teamwork Server.
Cancel	Cancels the login process.
Help	Opens the Help dialog.

To open a Teamwork project

1. On the MagicDraw® main menu, click **Collaborate > Open Server Project**. The **Open Server Project** dialog opens.



2. Select a particular project and click **Open**. MagicDraw® opens the selected project.

Important

- All users must connect to Teamwork Server using the same host address (IP address or machine name).
- DataHub handles the items in Data Sources in compliance with the Teamwork Server rules.