
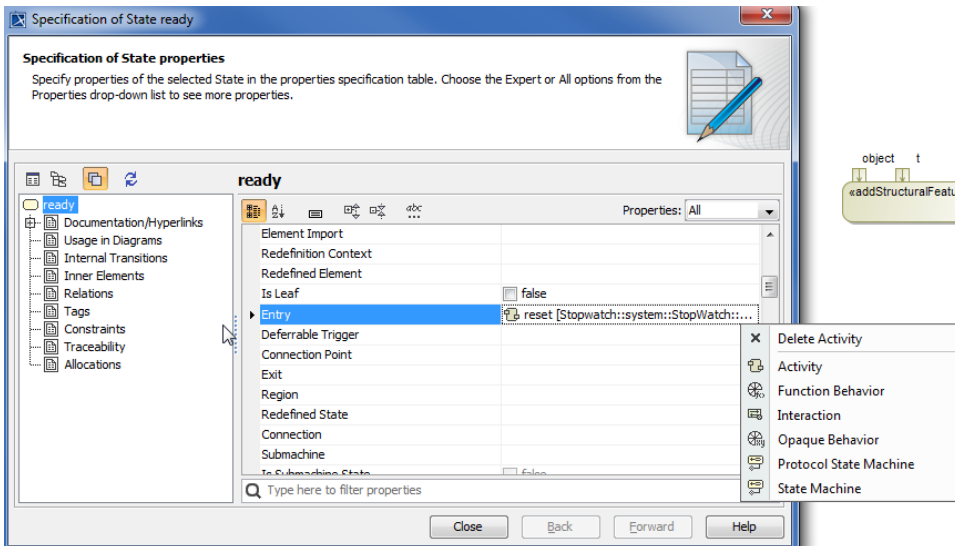


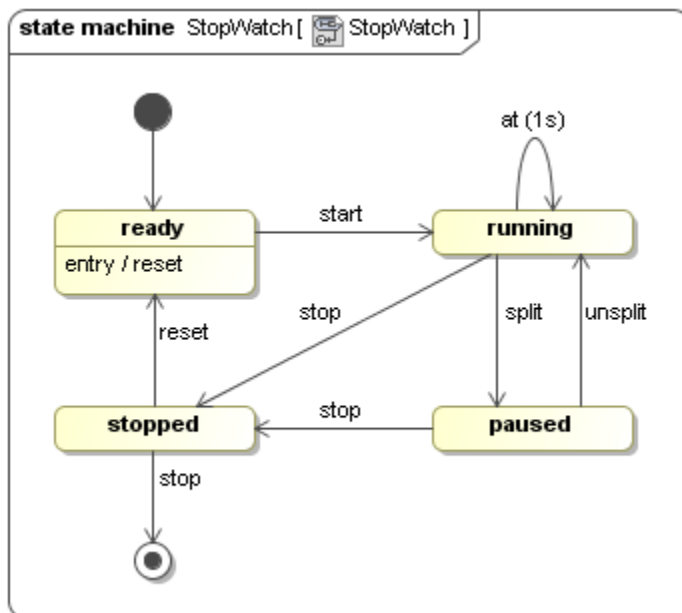
Adding a reset Activity to the ready State

To add a **reset** Activity to the Entry to the **ready** State

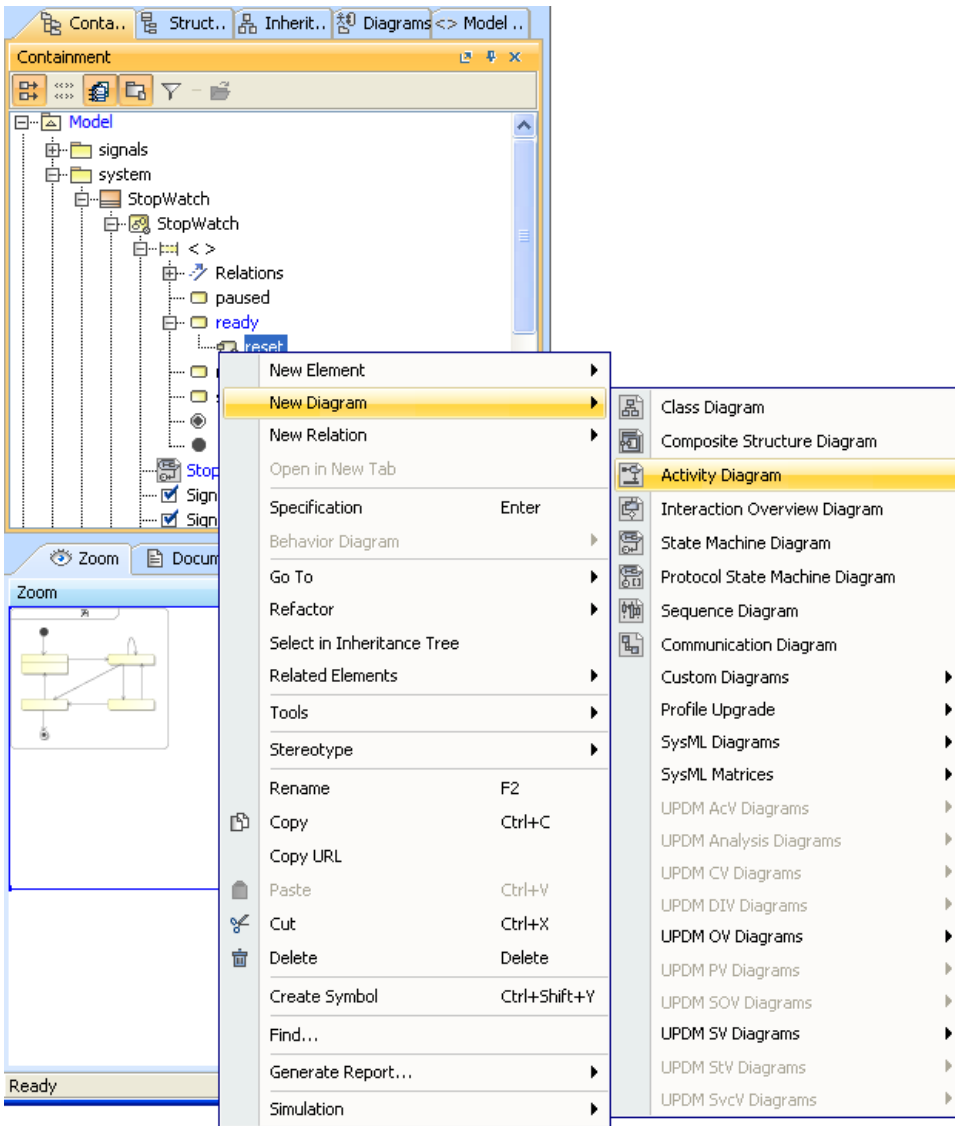
1. Right-click the **ready** State on the Stopwatch State Machine diagram and select **Specification** to open the State's Specification window.
2. Select the **Entry** row and click the  button. A context menu will open.
3. Select **Activity**. A new Activity will be created for the entry to the **ready** State.



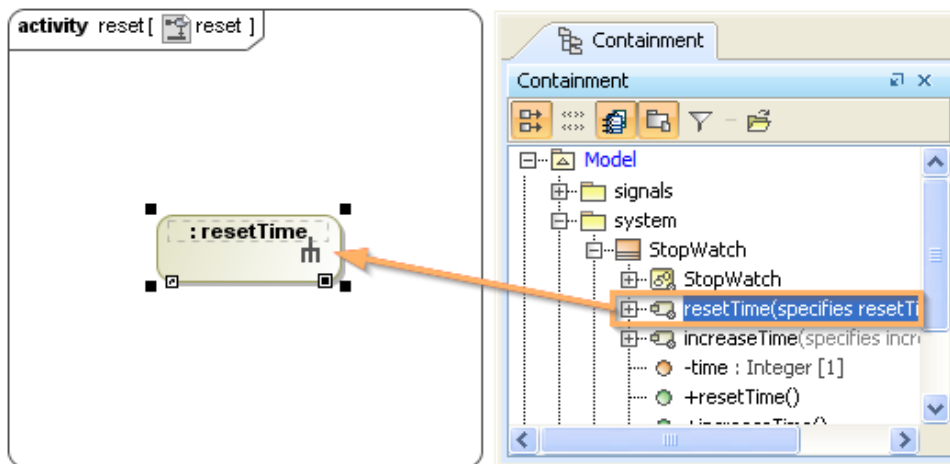
4. Name the created Activity "**reset**".
5. Click **Close** to close the Specification window. The reset Activity will be added to the entry to the **ready** State on the Stopwatch State Machine diagram as shown .



6. Add an Activity diagram to the created **reset** Activity of the **ready** State by right-clicking the reset Activity in the containment browser and select **New Diagram > Activity Diagram**. A new Activity diagram will be created.



7. Use the default name of the diagram, which is "reset".
8. Add a CallBehaviorAction to the resetTime Activity on the reset Activity diagram by dragging the resetTime Activity from the containment browser to the reset Activity Diagram.



9. Complete the **reset** Activity by adding an Initial stage and a Final Activity stage to the **reset** Activity diagram and connect the two stages and the resetTime Action using **ControlFlow**, which is on the Activity Diagram toolbar.

