

# Applying Actual Measurements

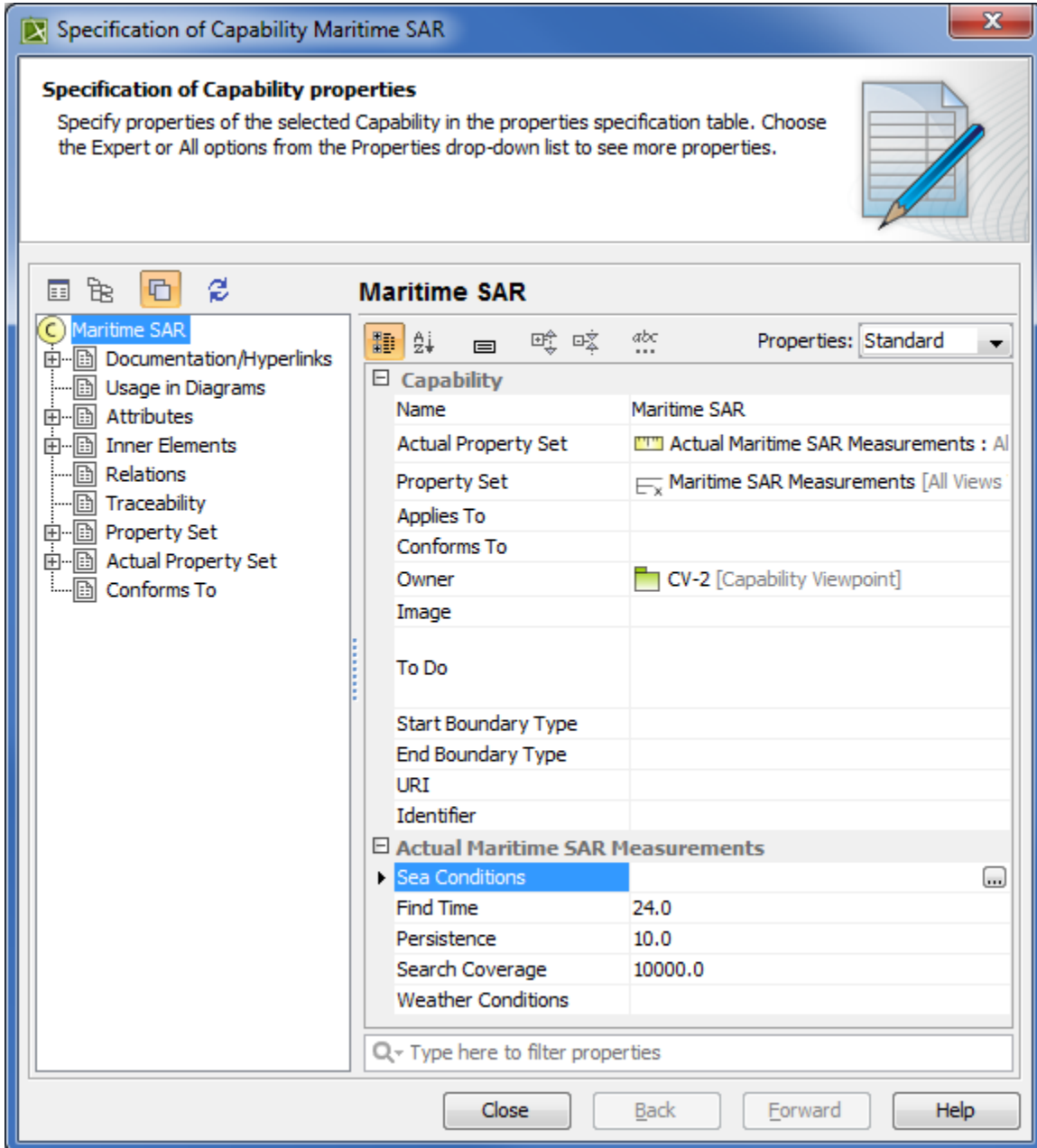
An Actual Measurements can be applied to measurable elements only.

To make an element measurable

1. Create a Measurement Set with one Measurement at least.
2. Select the element you want to measure and open its Specification window.
3. Add the created Measurement Set as a value for the **Measurement Types** property.

 You can apply the Measurement Set by dragging it from the Model Browser onto the element.

As soon as you make the element measurable, define actual values for all measurements contained within the Measurement Set.



**Specification of Capability Maritime SAR**

**Specification of Capability properties**

Specify properties of the selected Capability in the properties specification table. Choose the Expert or All options from the Properties drop-down list to see more properties.

**Maritime SAR**

Properties: Standard

Capability	
Name	Maritime SAR
Actual Property Set	Actual Maritime SAR Measurements : Al
Property Set	Maritime SAR Measurements [All Views]
Applies To	
Conforms To	
Owner	CV-2 [Capability Viewpoint]
Image	
To Do	
Start Boundary Type	
End Boundary Type	
URI	
Identifier	

**Actual Maritime SAR Measurements**

- Sea Conditions
  - Find Time: 24.0
  - Persistence: 10.0
  - Search Coverage: 10000.0
  - Weather Conditions

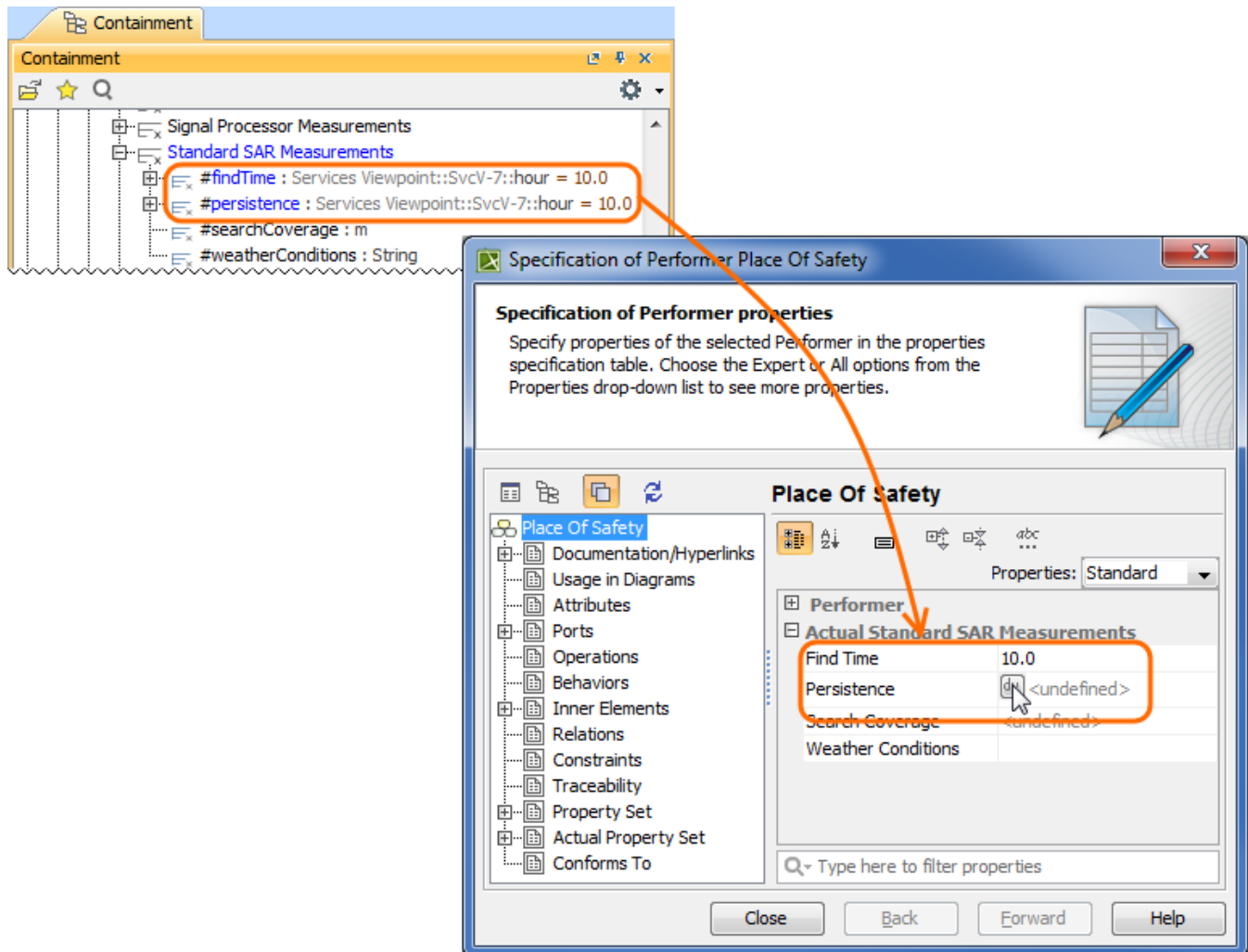
Type here to filter properties

Close Back Forward Help

Define the default values in the Specification window of the Measurement Set and you will be able to use them when creating Actual Property Sets. You can use the default values with just one click of the **Default Value** button in the element's Specification window.

To set the default value for the Actual Property Set

1. Select the element for which you want to specify the Actual Property Set and open its Specification window.
2. In the Actual <measurement type name> property group, click the **dv** button to assign the default value.



- The default values are set automatically when the measurement's multiplicity is set to 1 and more.
- When you remove all values of the Actual Measurement Set, the Actual Property Set is removed from the model as well.