

Working with Standards Taxonomy diagram

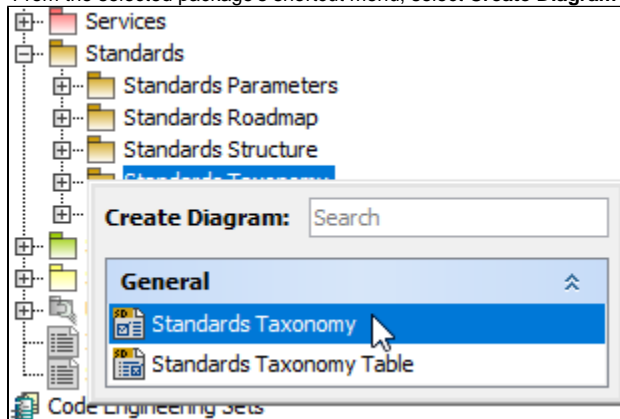
On this page

- [Creating a diagram](#)
- [Creating an element](#)
- [Connect the elements](#)

Creating a diagram

To create an Standards Taxonomy diagram

1. In the Containment Tree, select the Standards Taxonomy and do one of the following:
 - From the selected package's shortcut menu, select **Create Diagram > Standards Taxonomy**.



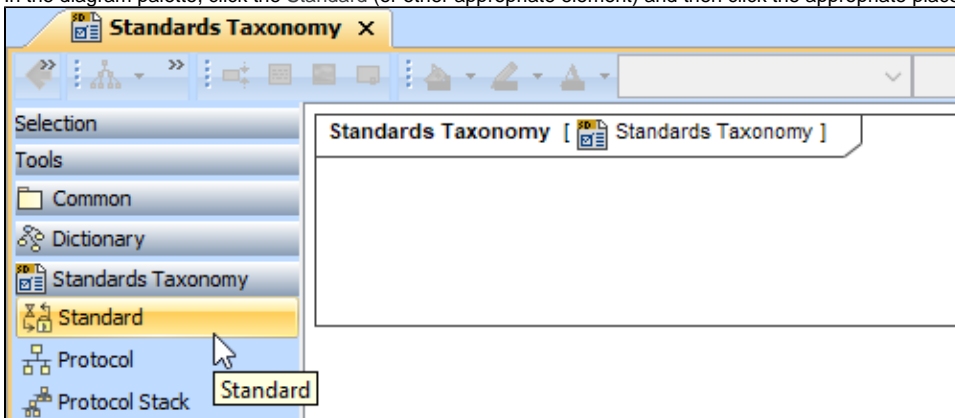
- In the modeling tool's main menu, click **Create Diagram**, search for **Standards Taxonomy** and select it.
2. Name a diagram or leave it with the default name.

Creating an element

When the diagram is created, you can start creating the appropriate elements. An example is described using Standard element, but the same is valid for other elements.

To create an element in a diagram

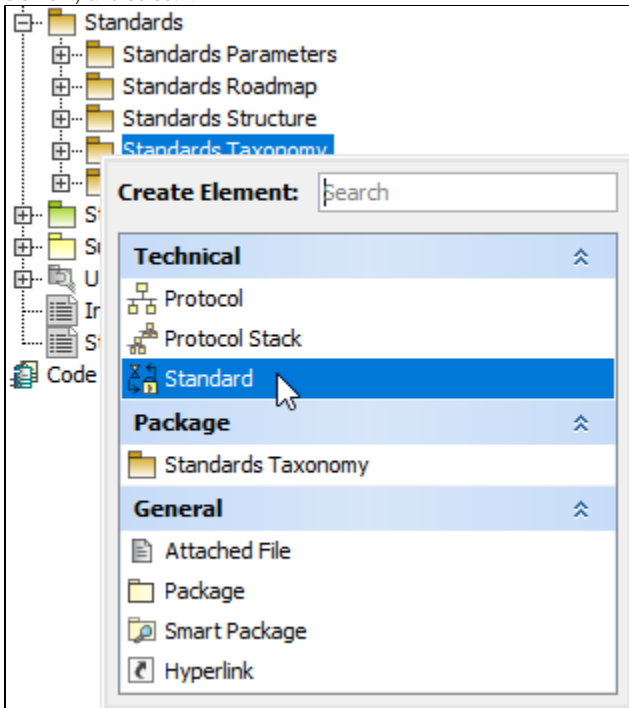
1. In the diagram palette, click the Standard (or other appropriate element) and then click the appropriate place on the diagram pane.



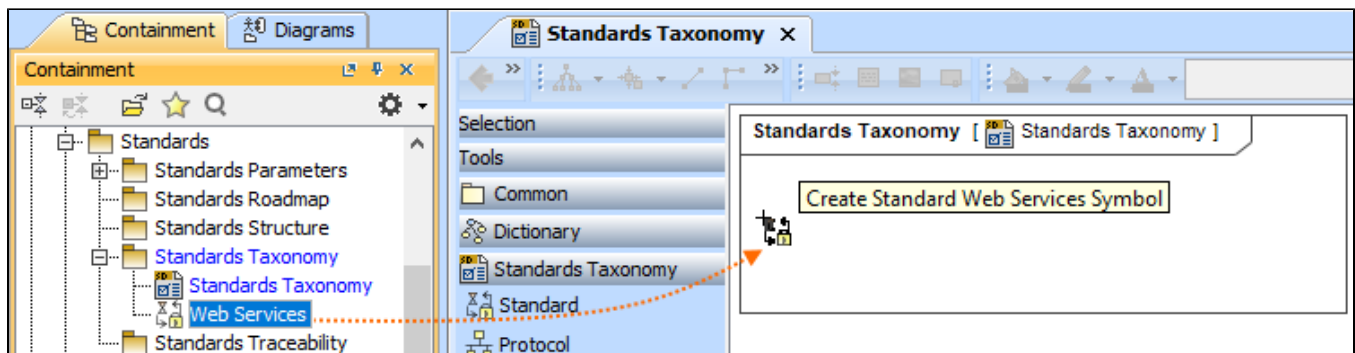
2. Name the element.

To create an element in the Containment tree

1. Right click the Standards Taxonomy package and from the shortcut menu, select **Create Element**. Search for the Standard (or other appropriate element) and select it.



2. Name the element.
3. Drag the created element from the Containment tree to the diagram pane.



To create the elements from other resources (e.g. Word, Excel, HTML)

1. Copy a list in your resource.
2. In a diagram, press Ctrl+V and from the **Paste Special** dialog, choose **Element**.
3. From the **Select Type** dialog, choose Standard (or other appropriate element).

 more information about creating the elements from other resources, see [Creating elements from other resources](#).

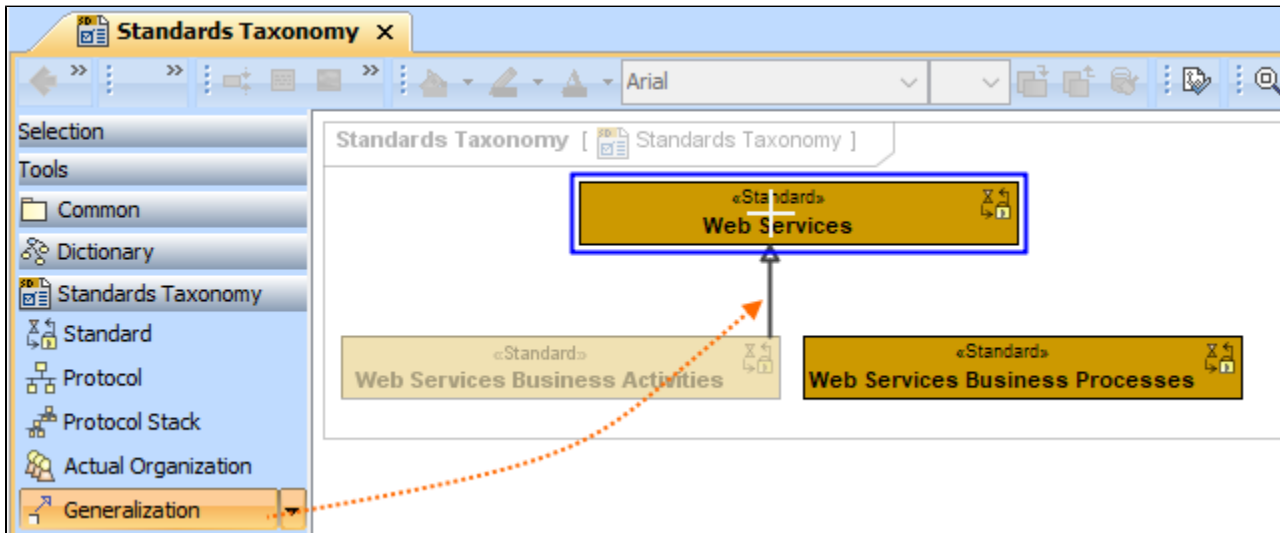
Connect the elements

When you have Standard (or other appropriate element) created, you can start connecting them using the Generalization relationship.

To connect the elements with the Generalization relationship

1. Select an element from which the Generalization will be drawn.
2. From the diagram palette, choose Generalization.

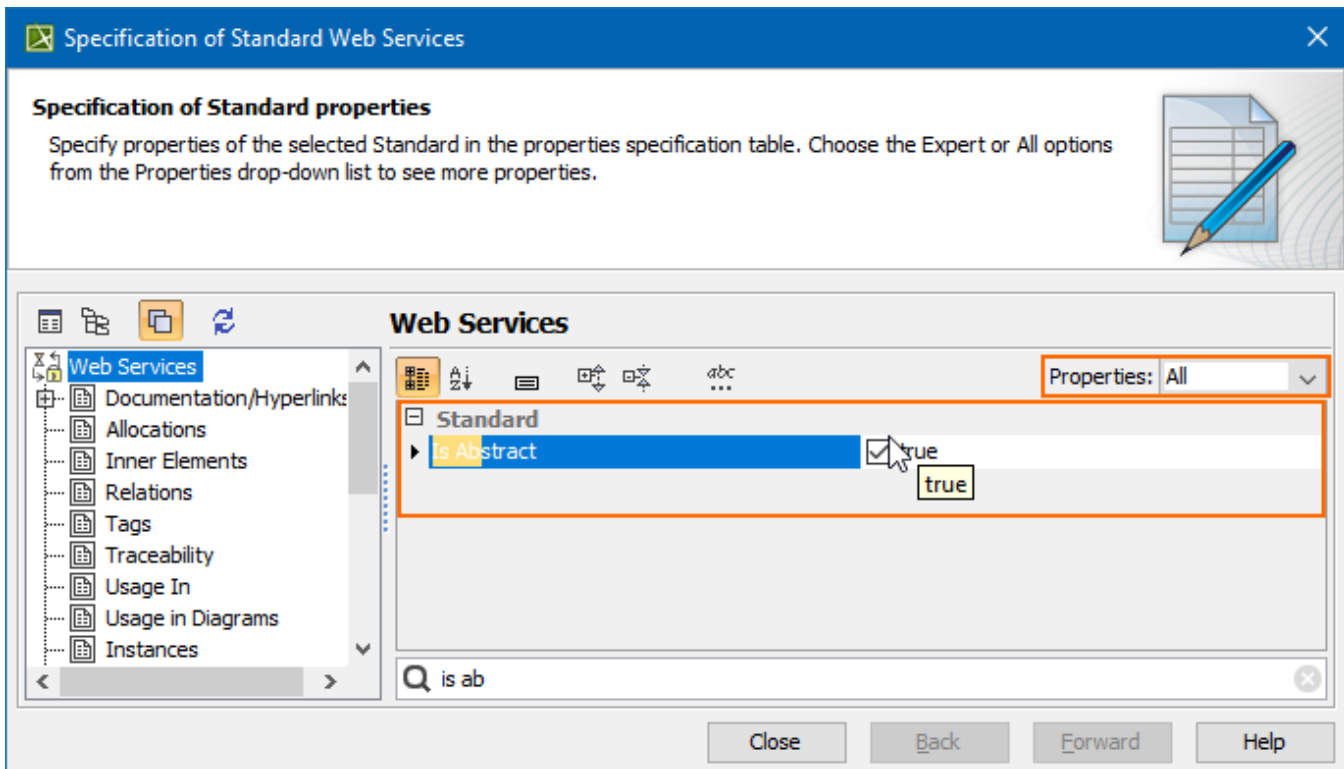
3. Connect the Standard elements.



If there is a need, you can make the Generalization target element abstract.

To make an element abstract

1. Select an element and open its [Specification window](#).
2. Make sure that **All** is chosen for **Properties**.
3. Search for **Is Abstract** and set it to **true**.

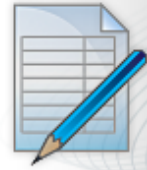


To view the inherited properties

1. Select an element and open its [Specification window](#).
2. Click Attributes, Properties, or Relations property group.

Standard attributes

The Attributes node contains a list of Standard attributes. Create or delete attributes. Use the attribute specification button to edit properties of a specific attribute.



Attributes

Inner Elements

Relations

Tags

Traceability

Usage In

Usage in Diagram

Instances

Attributes

Ports

Operations

Attributes

Up

Down

Create

Clone

Redefine

Delete

Close

Back

Forward

Help

Name	Type	Default Value	Classifier
Inherited			
- measurement1			<div>Web Services [Sta...]</div>
- measurement2			<div>Web Services [Sta...]</div>