

S4 Service Functions

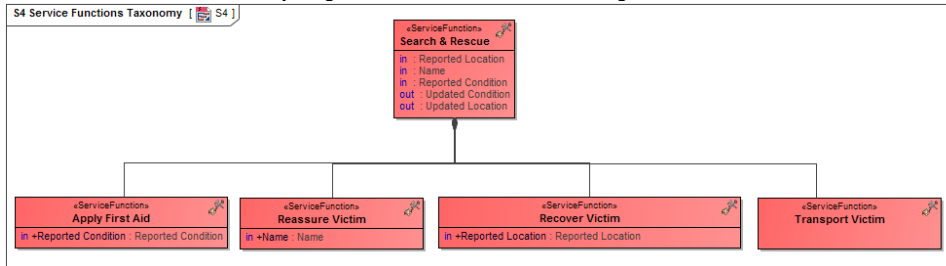
Description

The S4 Service Functions view defines the behavior of a service in terms of the functions it is expected to perform. S4 is the key behavioral specification for services. Equivalent in nature to [L4 - Logical Activities](#) and [R4 - Resource Functions](#), it specifies a set of functions that a service implementation is expected to perform.

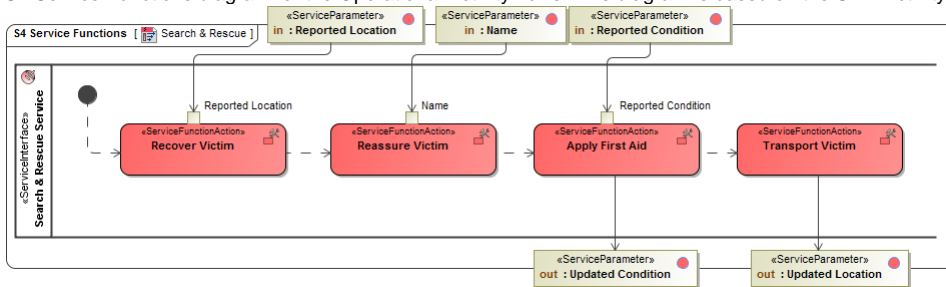
Implementation

The S4 view can be represented using:

- S4 Service Functions Taxonomy diagram based on the UML Class diagram.



- S4 Service Functions diagram for the Operational Activity flows. This diagram is based on the UML Activity diagram.



- UML Activity diagram.
- SysML Activity diagram.
- SysML Block Definition diagram.
- UML Class diagram.

Related elements

- [Service Function](#)
- [Service Function Action](#)
- [Function Control Flow](#)
- [Function Object Flow](#)
- [Service Method](#)
- [Service Parameter](#)
- [Service Interface](#)

Related procedures

- [Creating S4 Service Functions diagram](#)
- [Creating S4 Service Functions Taxonomy diagram](#)
- [Building the S4 Services to Operational Activities Mapping matrix](#)
- [Creating Process Flow Diagrams From Compositions or Aggregations Defined in Process Diagrams](#)