

P6 Resource Sequence

Description

The P6 Resource Sequence view provides a time-ordered examination of the interactions between Resources. These are usually depicted as event-trace diagrams and will have an accompanying description that defines the particular scenario or situation.

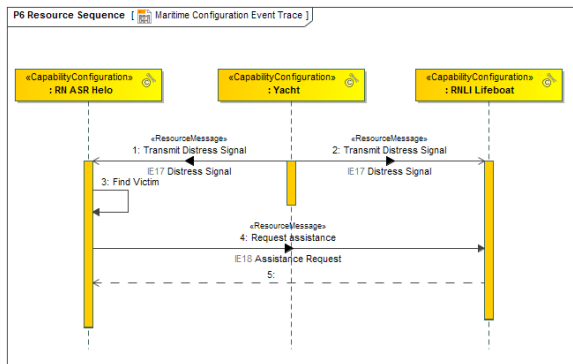
P6 products are valuable for moving to the next level of detail from the initial solution design, to help define a sequence of functions and system data interfaces, and to ensure that each participating resource or system port role has the necessary information it needs, at the right time, in order to perform its assigned functionality.

The P6 view may be used for:

- Analysis of resource events impacting operation.
- Behavioral analysis.
- Identification of non-functional system requirements (input to System Requirement Document).

Implementation

The P6 view can be represented using a P6 Resource Sequence diagram which is based on the UML Sequence diagram.



Related procedures

- [Creating Resource Interaction in P6 diagram](#)

Related elements

- Resource Event Trace
- Resource Message
- Resource Role
- Resource Interaction
- Exchange Element
- Energy
- Materiel
- Resource Artifact
- Software
- Capability Configuration
- Organization
- Post