

# Diagram Creation Wizard

The **Diagram Creation Wizard** is used to create the following diagrams:

- [CV-3 Capability Phasing](#) (DoDAF)
- [PV-2 Project Timelines](#) (DoDAF)
- AcV-2 Programme Timelines (MODAF)
- StV-3 Capability Phasing (MODAF)
- NPV-1 Programme Portfolio Relationships (NAF v.3)
- NCV-5 Capability to Organisational Deployment Mapping (NAF v.3)
- [Lr Lines of Development](#) (NAF v.4)
- [Cr Capability Roadmap](#) (NAF v.4)



The name of this wizard depends on particular diagram name: **<diagram name> Creation Wizard**:

- **CV-3 Creation Wizard**
- **PV-2 Creation Wizard**
- **AcV-2 Creation Wizard**
- **StV-3 Creation Wizard**
- **NPV-1 Creation Wizard**
- **NCV-5 Creation Wizard**
- **Lr Lines of Development Creation Wizard**
- **Cr Capability Roadmap Creation Wizard**

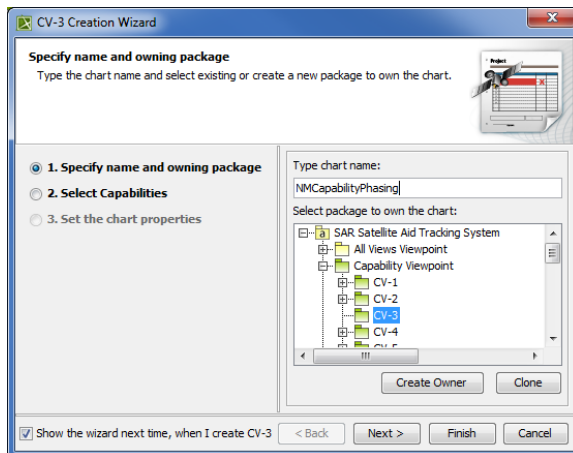
To open the **Diagram Creation Wizard**

1. Right-click the **<view name> Package** and select **Create Diagram > <diagram name>**.  
The **Diagram Creation Wizard** opens.

The wizard consists of three steps:

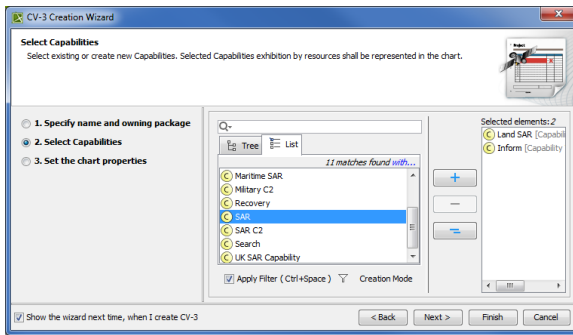
1. Name and owning package specification.





In this step, you can specify the diagram name and select or create the owning package. If you want to create a new owning package, use the **Create Owner** button. Also, you can clone an existing package by clicking the **Clone** button.



2. Capability selection.

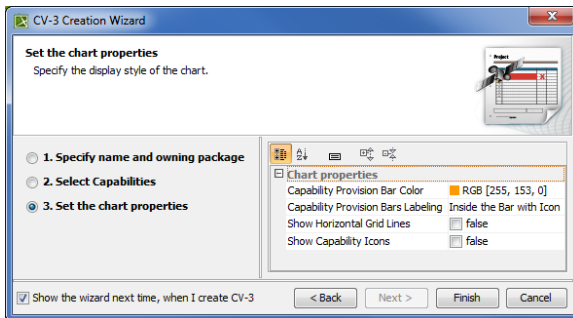
In this step, you can select Capabilities from the list.




| Button  | Description   |
|---|---|
|  | Selects a Capability.<br><br><div> Alternatively, double-click the Capability.</div> |
|  | Removes a Capability.   |
|  | Removes all Capabilities.   |

### 3. The chart property setting.

In this step, you can set the display style of the chart.



 If you do not wish to use the this wizard next time, clear the **Show the wizard next time, when I create <diagram name>** check box.

To restore the usage of the **Diagram Creation Wizard**

1. Select **Options > Environment**.
2. In the **Environment Options** dialog select the **UPDM** options group.
3. In the General properties, set the **Show PV-2/AcV-2/NPV-1 Creation Wizard each Time Creating New Chart** property value to *true*.

## Related procedures

- [Creating Lr Lines of Development \(Lr Gantt chart\)](#)
- [Creating Cr diagram](#)
- [Creating CV-3 diagram](#)
- [Creating PV-2 diagram](#)