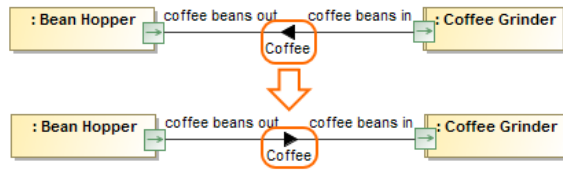


# Reversing Information Flow direction

You can reverse the direction of the [Information Flow](#) on [Connectors](#), as shown in the following example. After reversing the direction, the flow directions are updated in all the related diagrams.



The direction of *Coffee* Information Flow is reversed. The illustration displays concepts from SysML Plugin.

To reverse Information Flow direction

1. Select the Connector that has the Information Flow set in the Containment tree or on the diagram pane.
2. From its shortcut menu, select **Refactor > Reverse Flow Direction**.  
The direction of the Information Flow is changed and updated in all the related diagrams.

## Related pages

- [Refactoring](#)
- [Working with model elements](#)
- [Connector](#)
- [Information Flow](#)