


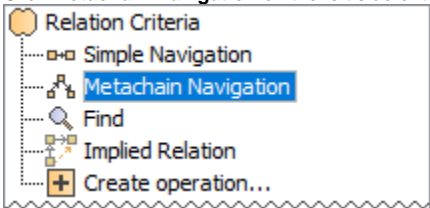
# Using Metachain Navigation


Metachain operation is one of the operation types used to specify criteria for querying models. Use the **Metachain Navigation** operation type when specifying indirect (multi-level) relations between elements through the chains of properties.

**Note**  
Metachains allow you to search for indirectly related elements, although they do not support loops and recursive relations.

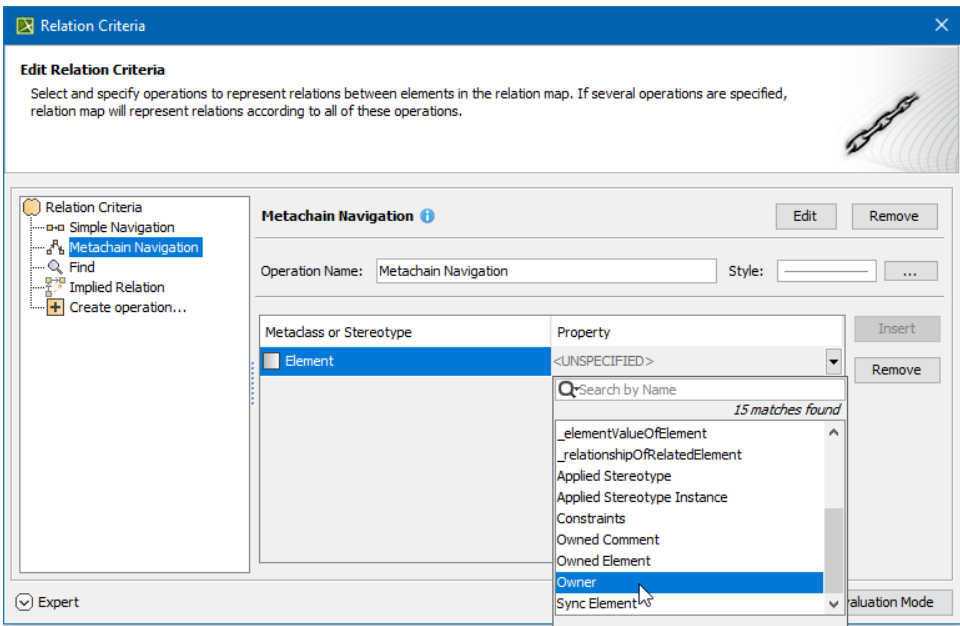
## How to specify a Metachain Navigation as criterion

1. Click **Metachain Navigation** on the left side of the dialog box.



2. Change the name of the operation, if needed.
3. Click  to set a style that represents the specified metachain navigation symbol.
4. Click the **Insert** button to create a new step of the metachain. A new row is added to the list in which you need to specify a metaclass or stereotype and a property for a metachain navigation as shown in the following table:

Column	Description
<b>Metaclasses or Stereotype</b>	Either a metaclass or a stereotype of a metachain step (see Figure 2). The first step, when created, already has a metaclass or a stereotype selected by default. This value is the context element type. The default metaclass or stereotype of the first step can be changed. The second step and all further steps are more specific: the values suggested for selection are limited according to the values selected in the first step, since you will not be able to add a new step until the current step is not specified.
<b>Property</b>	A property of the selected metaclass or stereotype.



5. Repeat the previous step to create as many steps of the metachain as you need for specifying the criteria.

**Note**  
To remove a step from the metachain, click the **Remove** button.

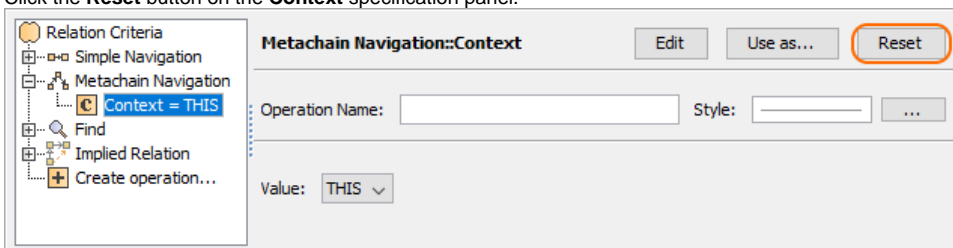
 **Information**  
You can [add a new metachain operation](#).

## Manipulations in Expert Mode

The **Expert** mode allows you to change the [Contextual element](#) of a **Metachain Navigation** operation, and to create a new operation in which the result of the **Metachain Navigation** operation is used as an argument.

### How to change the [Contextual element](#) of a Metachain Navigation criterion

1. On the left side of the dialog box, expand the **Metachain Navigation** criterion and select the **Context** parameter.
2. Click the **Reset** button on the **Context** specification panel.



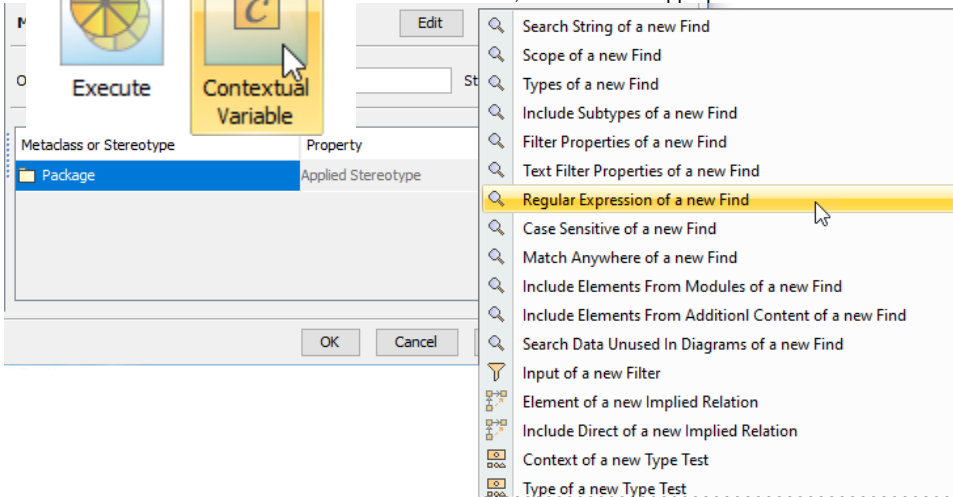
The value of the **Context** parameter becomes null.

3. Select a new context from the list of operations and element types.

 **Information**  
To restore the original context, expand the **Other** group, and click **Contextual Variable**.

### How to use a Metachain Navigation operation as a parameter of another operation

1. Or
  2. Or
- Metachain Navigation.**  
Click the **Use as** button, and select the appropriate command.



3. Specify other parameters of the new operation.

#### Related pages

- [Specifying criteria for querying model](#)
  - [Getting started with specifying criteria](#)
  - [Using Simple Navigation](#)
  - [Using Find operation](#)
  - [Using Implied Relations](#)
  - [Creating new operations](#)
    - [Calling operations from the model](#)
    - [Creating script operations](#)

