

# Creating path variables

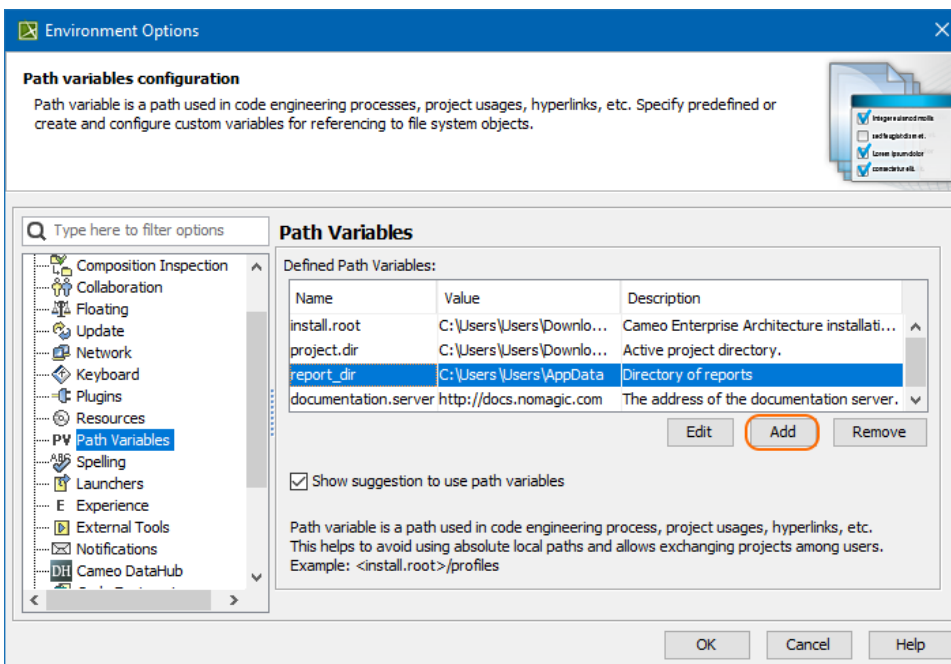
The main purpose for the path variables feature is to give additional sharing flexibility. It enables you to store paths in your project as named variables that can be easily adjusted on different machines.

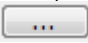
Path Variables may be used in:

- Code engineering classpath
- Working directories
- Hyperlinks
- Modules paths
- Reports

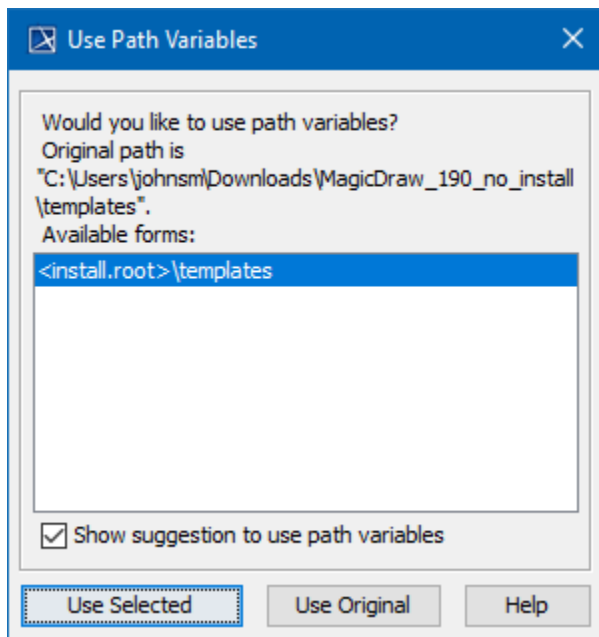
To create a path variable

1. In the main menu, go to **Options > Environment**. The **Environment Options** dialog opens.
2. In the left part of the dialog expand the **General** element and select **Path Variables**.
3. In the **Path Variables** area click the **Add** button. The **Path Variable** dialog opens.



4. In the appropriate boxes enter the path variable name and description.
5. Next to the **Value** box, click , navigate to the desired location and click **Open**.
6. In the **Path Variable** dialog, click **OK**. Your custom path variable is created and shown in the **Defined Path Variables** list.
7. In the **Environment Options** dialog, click **OK**.

Every user can specify different values of the same path variables. However path variables should be resolved only on demand, when they are used. If a modeling tool determines you can use path variables, once you specify your absolute path, the application automatically opens the **Use Path Variables** dialog box. For example, this dialog may open when in your project, you try to use another project **From predefined location** and add a new path to the **Paths to used projects** list.



If you do not want your modeling tool to automatically display the **Use Path Variables** dialog box, clear the **Show suggestion to use path variables** check box. To use the original path and cancel this dialog, click the **Use Original** button.

To use a suggested path variable

- 
- In the **Available forms** list, select a path and click the **Use Selected** button.

If you have your own documentation running on the local server, you can define the path in the *documentation.server* option.