

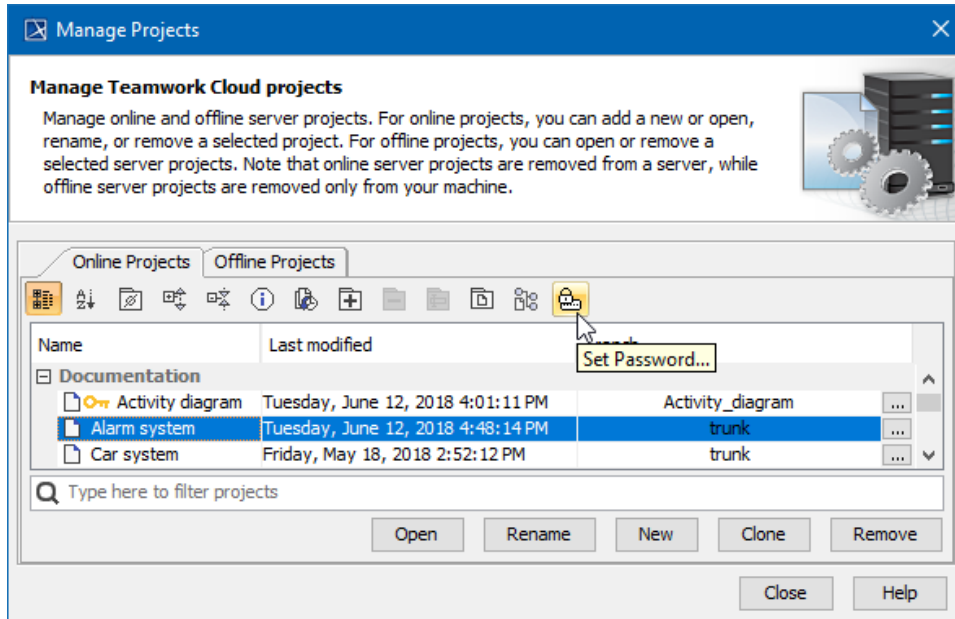
Password-protected projects

You can protect your server projects with a password. The password covers all project versions, and can be set or removed by a project owner or a user having **Administer Resources** [permission](#).

You must be logged to a server to set a password for a particular project.

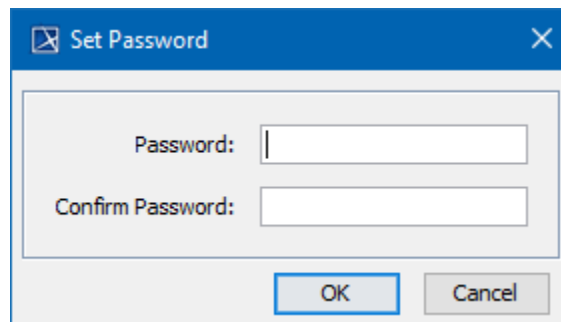
To set a password for a project

1. On the main menu, click **Collaborate > Projects**. The **Manage Projects** dialog opens.
2. In the **Online project** tab, select a project, you want to protect by a password and do one of the following:
 - On the dialog toolbar, click the **Set Password** button.
 - Right-click the selected project and click **Set Password**.



✓ You can use the search bar to faster filter used projects by name.

3. The **Set Password** dialog opens, wherein you need to type and confirm the password.



⚠ The icon  indicates password-protected projects.