

# Creating a DSL Element from the Shortcut Menu and Other Locations

The [Creating your First Customization](#) section introduced the step-by-step process of creating a custom element. Following are tips to create custom elements.

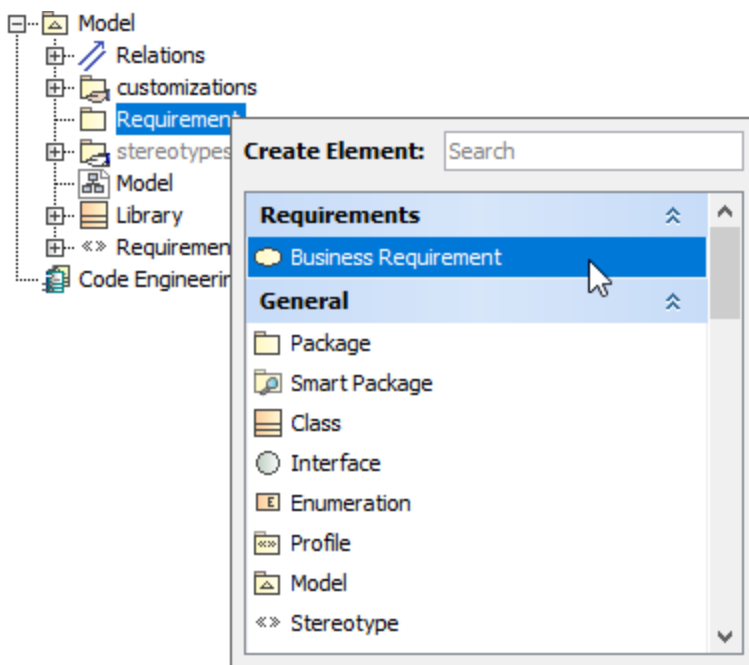
Use the **Possible Owners** property to define the possible owner for a customized element. You can also quickly create a customized element from the possible owner shortcut menu in the [Model Browser](#) and in other locations. For example, you can add a package as a possible owner for a customized use case element.

Use the **Possible Owners** property to quickly create a customized element from the following locations:

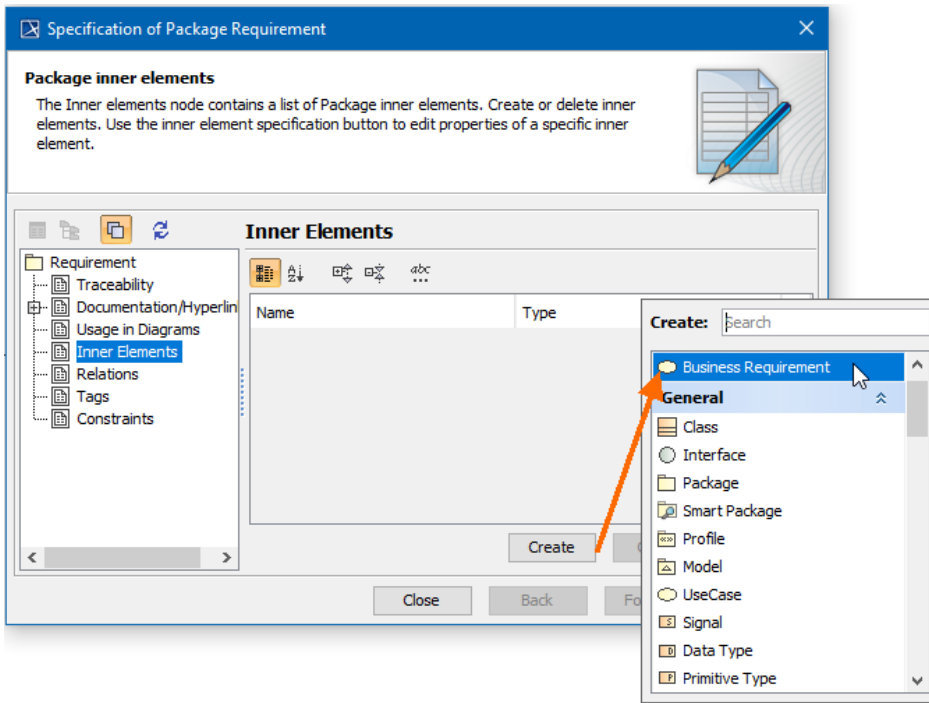
- The possible owner's shortcut menu, under the **Create Element** command, in the [Model Browser](#)
- The **Inner Elements** property group under the possible owner's Specification window.
- The [Select Element](#) dialog, when the element creation mode is turned on.

Examples of creating the *Business Requirement* element in [Creating a DSL Element from the Customized Category in the Shortcut Menu](#) are shown below:

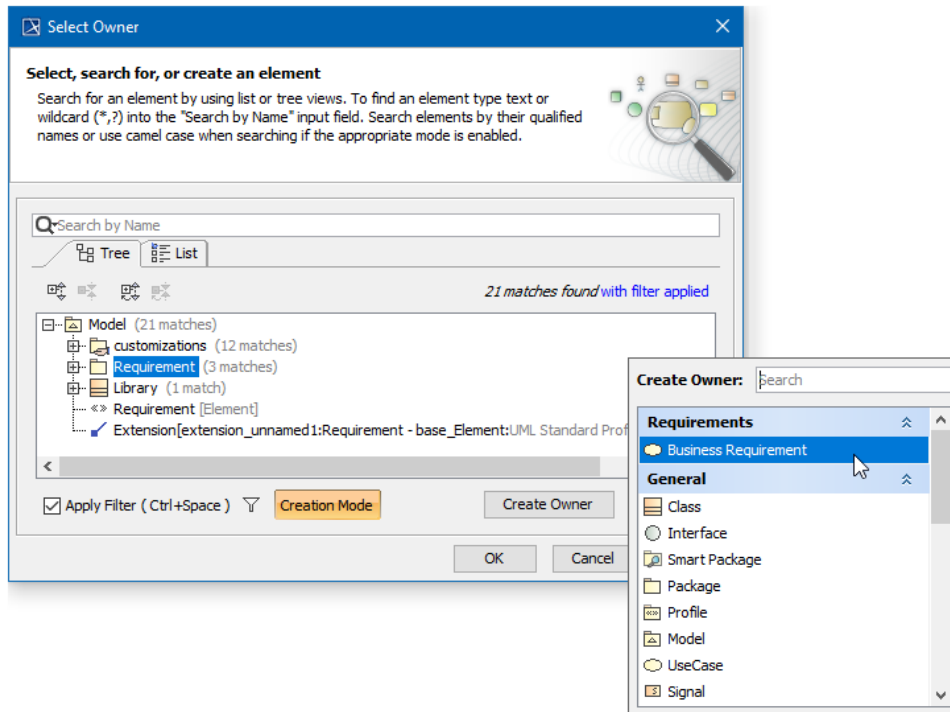
1. In the package shortcut menu (in the Model Browser) under the **Create Element** command.



2. In the possible owner's Specification window, the **Inner Elements** property group.



3. In the element Selection dialog, when creating a new element.



## Related Pages

- [Creating Customization Data](#)
- [Using Customization Data](#)
- [Customization Element Properties Description](#)