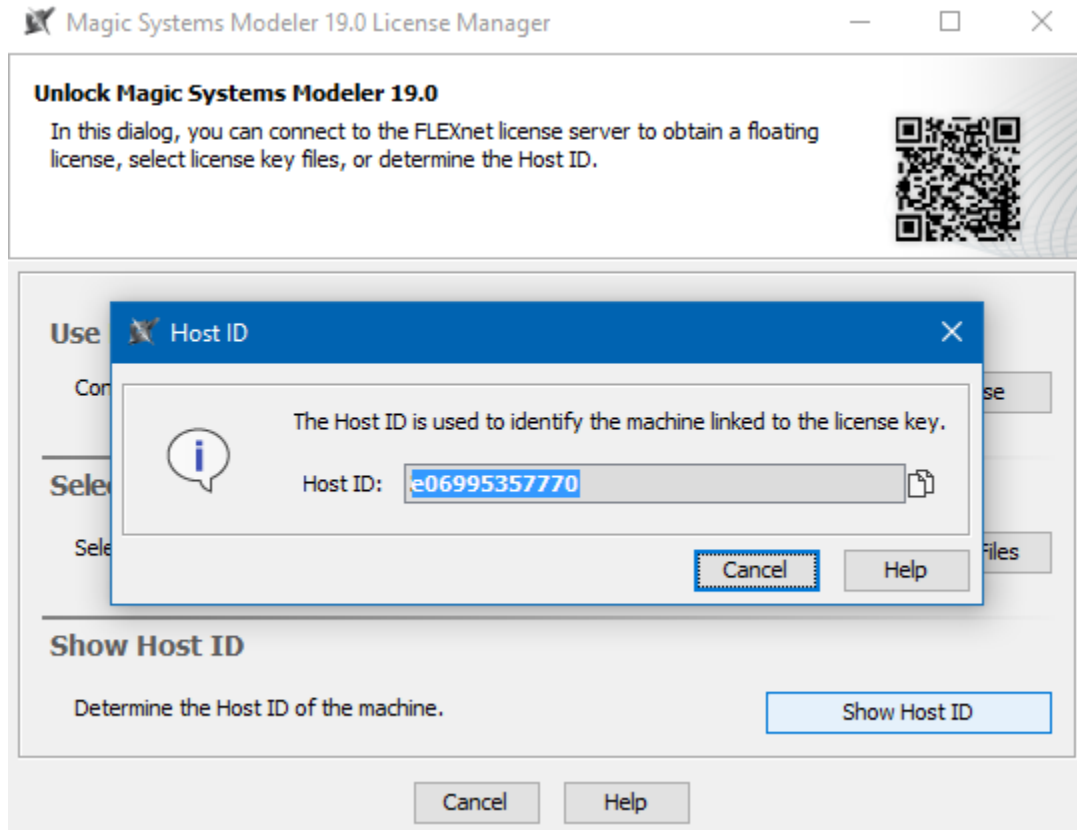


Determining your Host ID

To determine the [Host ID](#) of the machine on which the modeling tool is installed

1. Start the modeling tool.
2. When the **License Manager** dialog opens, click **Show Host ID**.
3. Click to copy the text from the **Host ID** box.

Please note that the Host ID may be encrypted if you have more than one network adapter.



The Host ID dialog

Related pages

- [Adding the license key](#)
- [Modeling tools licensing](#)