


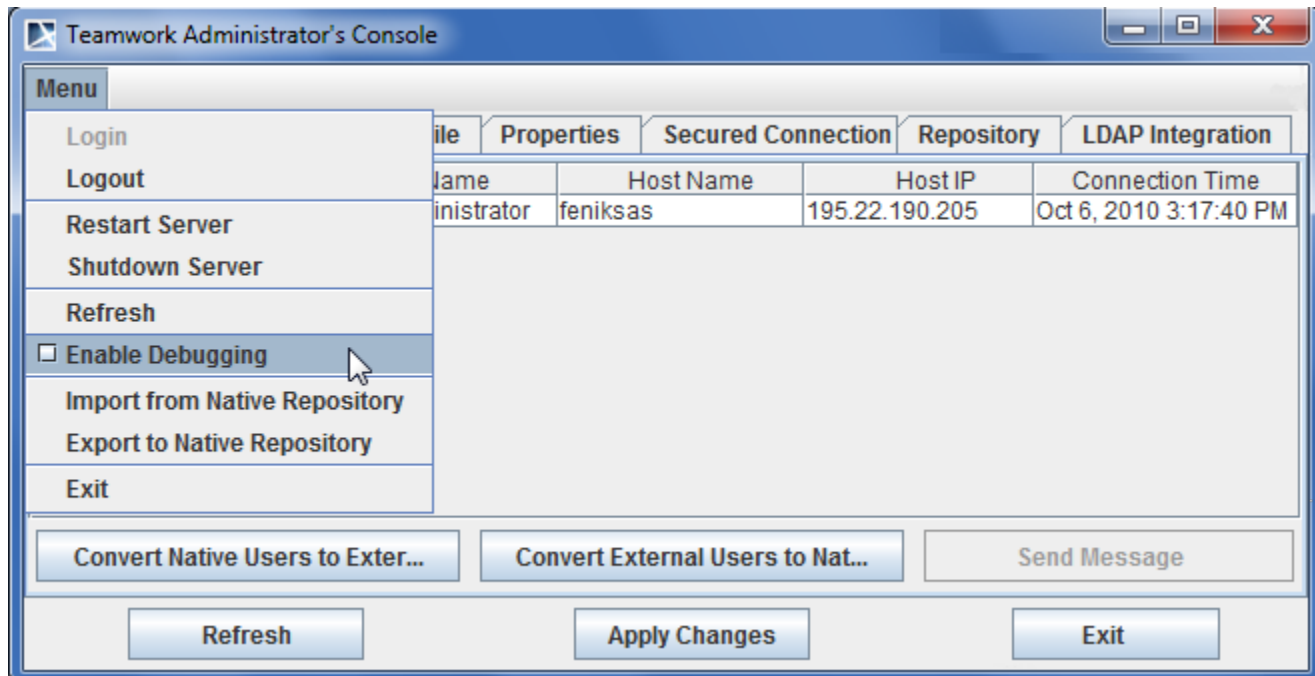
Changing the Teamwork Server Debugging Mode

You can change the Teamwork Server debugging mode without restarting.

To enable Teamwork Server debugging

1. Start Teamwork Server Administrator's Console.
2. Select **Enable Debugging** from the **Menu**.

 **Enable Debugging** is disabled in the Offline Administrator's Console mode.



Teamwork Administrator's Console - Enable Debugging