

# Web Publisher 2.0 report

Web Publisher 2.0 is a Java-Doc-like report template with a clickable navigation and an image map for all diagrams and elements. It allows you to publish MagicDraw models (including diagrams) in HTML with rich features, and to open them using your browser, e.g. Internet Explorer, Opera, or Firefox.

This section describes the features of Web Publisher 2.0, illustrates how to generate a Web Publisher 2.0 report template by using the Library.mdzip sample project, and gives you examples on how to work with each feature.



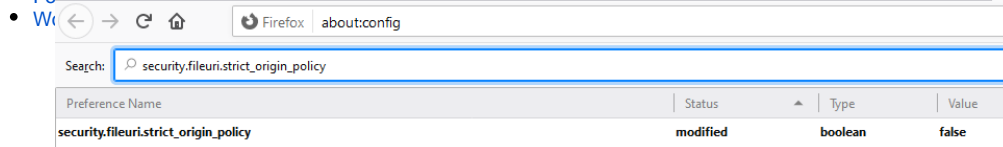
A Web Publisher 2.0 report.

**Note**  
Web Publisher 2.0 report is not fully supported by Google Chrome (unless following the steps below), Opera, and Microsoft Edge (Chromium-based); therefore, the data tree structure in the Containment tree may be missing because they do not allow JavaScript to load local files via **XMLHttpRequest**.

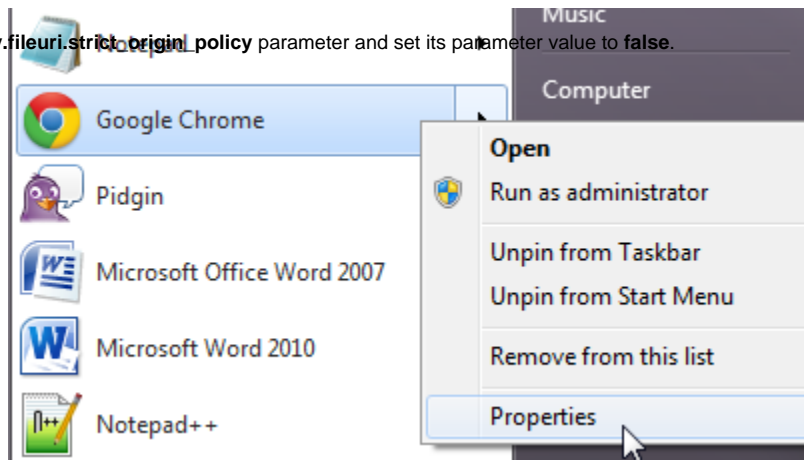
**Note**  
Web Publisher 2.0 report is also supported by Firefox. You can configure Firefox before opening Web Publisher 2.0 report by doing the following:

**Related pages**  
1. In the Firefox address box, type **about:config**.  
2. Close the web browser (Chrome) instances.

- 1. Close the web browser (Chrome) instances.



- 2. Find the **security.fileuri.strict\_origin\_policy** parameter and set its parameter value to **false**.



2.2 Add this argument "**--allow-file-access-from-files**" next to the web browser installation path.