

19.0 LTR SP3 Version News

Magic Collaboration Studio

Released on: November 21, 2019

Teamwork Cloud 19.0 SP3 presents major enhancements to TWCloud Admin search effectiveness and general application usability. Now that the caching mechanism has been improved, the resource and user search will always deliver fresh and up-to-date results. In addition to that, user experience reaches new levels due to the introduction of a full-screen view in Users and Roles management applications, an explicit listing of the roles inherited from User Groups, and data sorting capabilities across multiple applications.

User Interface Enhancements

Improved Web Application Performance

Displaying Inherited Roles

Mapping Users to LDAP Domains

Sorting Users, Resources, and Roles

Improved model editing in Cameo Collaborator

Graphical commenting improvements

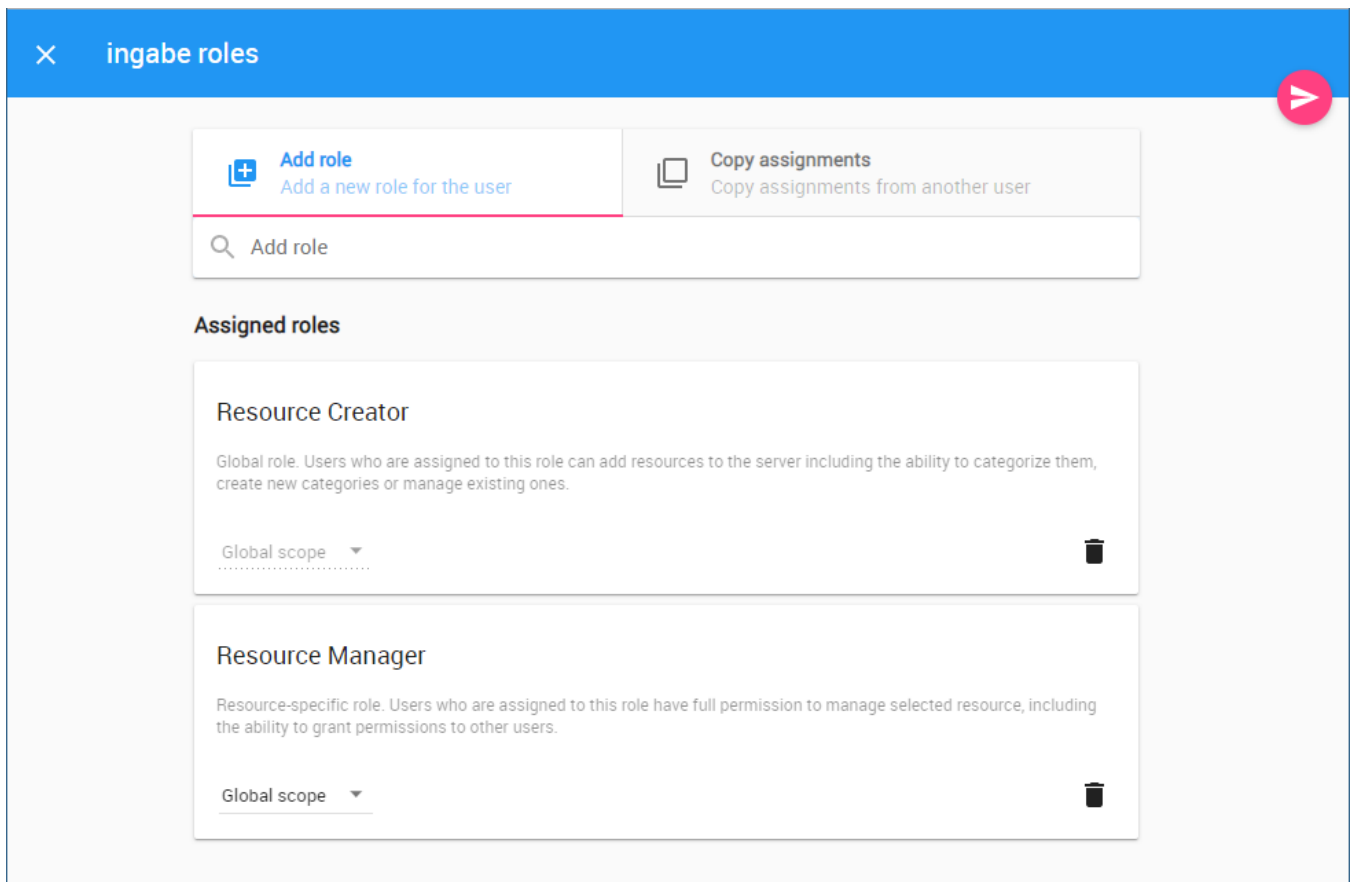
Quicker search in Resources

Other

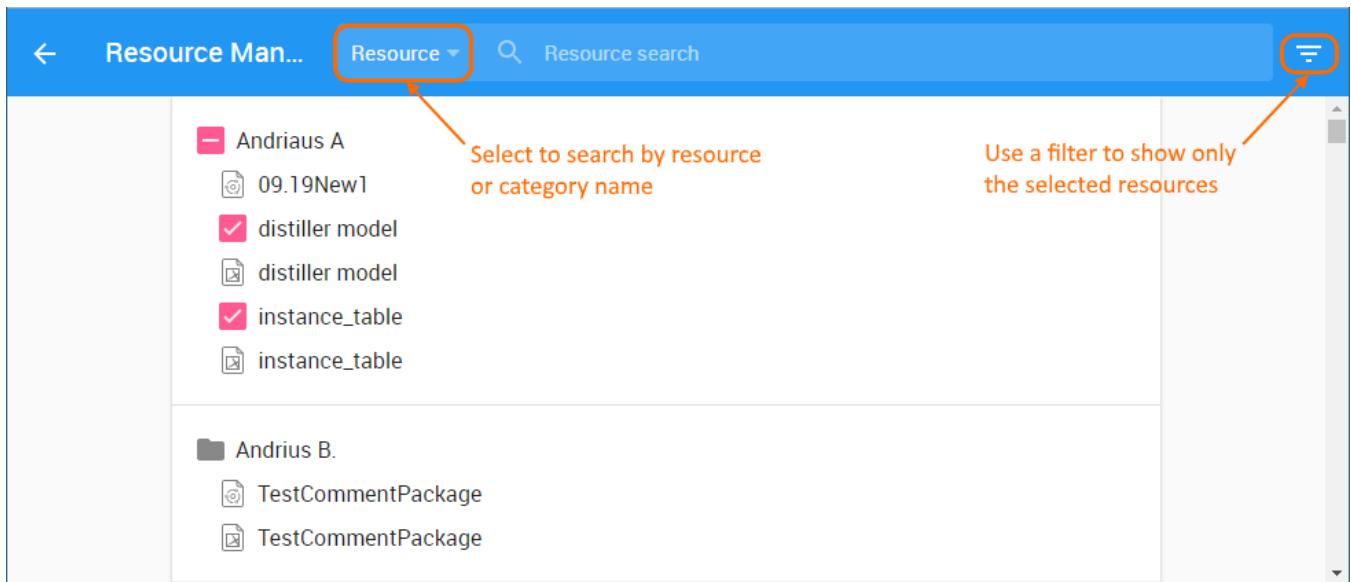
Key Issues Fixed in this Service Pack

User Interface Enhancements

The user interface of Users and Roles applications has been significantly improved allowing you to manage crucial information more effectively. It does not matter whether you use a personal computer or a mobile phone, modifying user details, roles, role scopes, and other data is very convenient using new full-screen forms as displayed below.



Conveniently add or remove user roles and copy assignments in one place.



Assign resources to a role a lot quicker by using an advanced search and a filter.

Improved Web Application Performance

In this version, the Teamwork Cloud caching mechanism has been enhanced, yielding significant improvements when searching for users or resources in respective applications. In particular, the search mechanism will now work faster and deliver fresh and up-to-date results.

Displaying Inherited Roles

The Users application introduces a new feature allowing you to see what roles of the selected user are inherited from User Groups.

Username ↑

Last activity date

Administrator	Nov 5, 2019 7:52 PM	⋮
alegud	-	⋮
andarm	-	⋮
armgri	-	⋮
Auste	Aug 13, 2019 3:24 PM	⋮
darpec	Sep 11, 2019 11:55 AM	⋮
deikac	-	⋮
edvard	Nov 5, 2019 7:52 PM	⋮
Guest	Oct 2, 2019 2:02 PM	⋮
john_s	Nov 5, 2019 7:59 PM	⋮
laura_l	-	⋮
mar_dem	-	⋮
morar	Oct 31, 2019 2:08 PM	⋮

×

User

john_s

Last activity on Nov 5, 2019 7:59 PM

EDIT

Roles

Resource Manager

Global scope

CHANGE

Inherited roles

Edit resources [Custom scope]

Domain Users

Resource Contributor [Global scope]

Domain Users

User groups

A user card now displays the roles inherited from User Groups.

Mapping Users to LDAP Domains

Managing users became easier since you can select the LDAP domain you want to map the users to when converting them to external.

Convert to external?

Are you sure you want to convert this user to an external one and map with selected LDAP domain?

☐ non-LDAP user (SAML/CAC)

☒ Local LDAP (11.4.4.58)

☐ Open LDAP (192.168.219.192)

CANCEL

CONVERT

The figure shows how you can select an LDAP domain when converting users to external.






Sorting Users, Resources, and Roles

Now you can sort users, resources, and roles by name and the last modification or activity date for better data management.

Resources

Resource search

Resources in Ingos

Name	Modified by	Modified	Version	
 Hybrid Sport Utility Vehicle	ingabe	Nov 4, 2019 12:26 PM	#1	<div></div>
 Hybrid Sport Utility Vehicle	ingabe	Nov 4, 2019 12:25 PM	#2	<div></div>
 mano	ingabe	Oct 31, 2019 4:48 PM	#1	<div></div>
 Climate Control System	ingabe	Aug 8, 2019 2:50 PM	#16	<div></div>
 Hybrid Vehicle	ingabe	Jul 29, 2019 2:57 PM	#1	<div></div>

In this figure, resources are sorted by the last modification date.

Improved model editing in Cameo Collaborator

The previous version of Cameo Collaborator introduced a new feature allowing you to edit parts of your model directly in a published document. This version of the tool brings a number of enhancements to this feature. Now you can:

- Edit tags and slots with multiple values.
- Edit values in Instance tables.
- Easily reorder values of multi-value properties by dragging them to a new position.
- Delete tag values that you no longer need.

Diagrams

Search

Hybrid Sport Utility Vehicle

HSUV Requirement Table

HSUV Requirement Table

#	Id	Name	Text
1	R1.2.1	Emissions	The vehicle shall meet Ultra-low Emissions vehicle standards
2	d.4	Power	
3	d.2	Range	
4	d.1	RegenerativeBraking	

Edit

Value

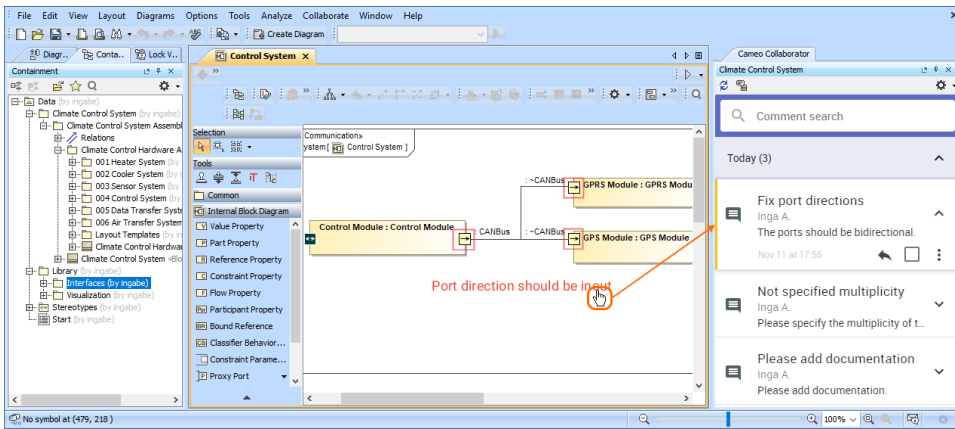
The Hybrid SUV shall have the braking capability of a typical SUV.

Rich text editing

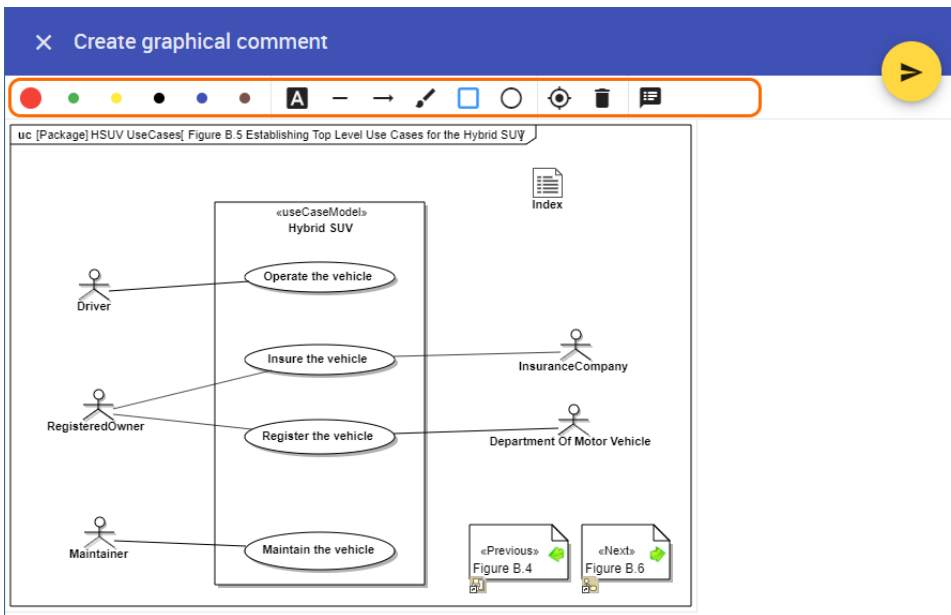
Graphical commenting improvements

Graphical commenting has been improved both in Cameo Collaborator and the modeling tool side:

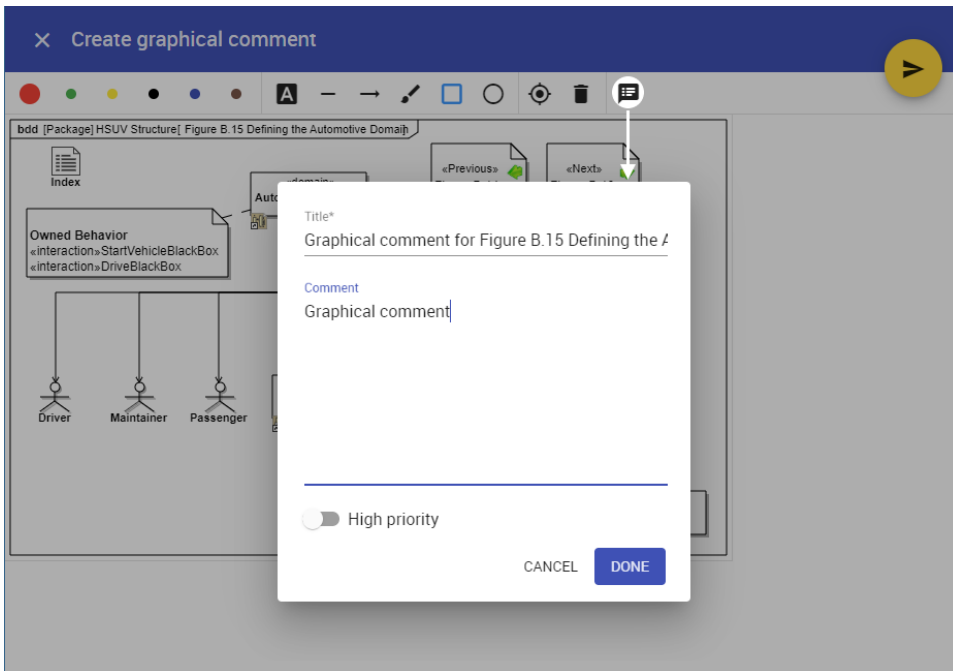
- Now you can quickly navigate from graphical comments to the comments in the comments panel of a modeling tool.



- In Cameo Collaborator, create graphical comments using a more user-friendly drawing toolbar.



- Create graphical comments quicker by editing comment text during comment creation without having to save it first.



- Now graphical comments are automatically shown in all open diagrams once the comments panel is opened in a modeling tool.

Quicker search in Resources

You'll find your Teamwork Cloud projects and Cameo Collaborator documents a lot quicker with the improved search capability in the Resources app.

Other

- Units are shown in tables the same way they are shown in a modeling tool.

#	Name	ma	me	mr	margin
1	spacecraft	130 kg	95 kg	15 kg	35 kg
2	telecom	35 kg	27 kg	5 kg	8 kg
3	amplifier	10 kg	8 kg	10 kg	2 kg
4	antenna	20 kg	19 kg	20 kg	1 kg
5	propulsion	80 kg	68 kg	7 kg	17 kg
6	tank	44 kg	38 kg	44 kg	6 kg
7	thruster	29 kg	15 kg	29 kg	5 kg

- It is now possible to change the table row count per page in Cameo Collaborator documents.
- You can navigate large diagrams easier by simply dragging them in the desired direction.

Key Issues Fixed in this Service Pack

- In Teamwork Cloud 19.0 SP3, project opening issues for LDAP users have been solved.
- Now it is possible to import LDAP users and groups with the same name.

[Back to top](#)