


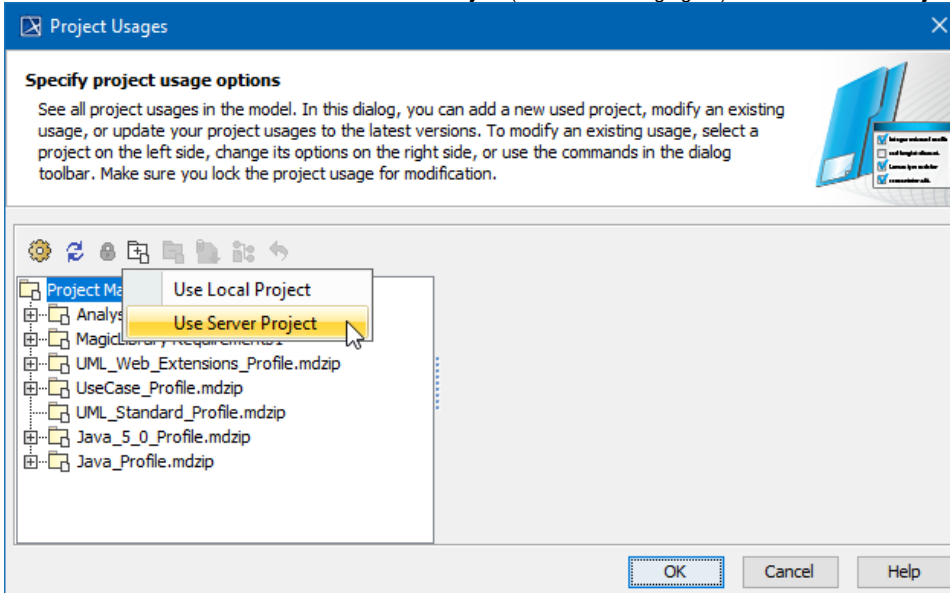
Start using a project in your project

To begin using a project in your current project, you must have an **Administer Resources** permission.

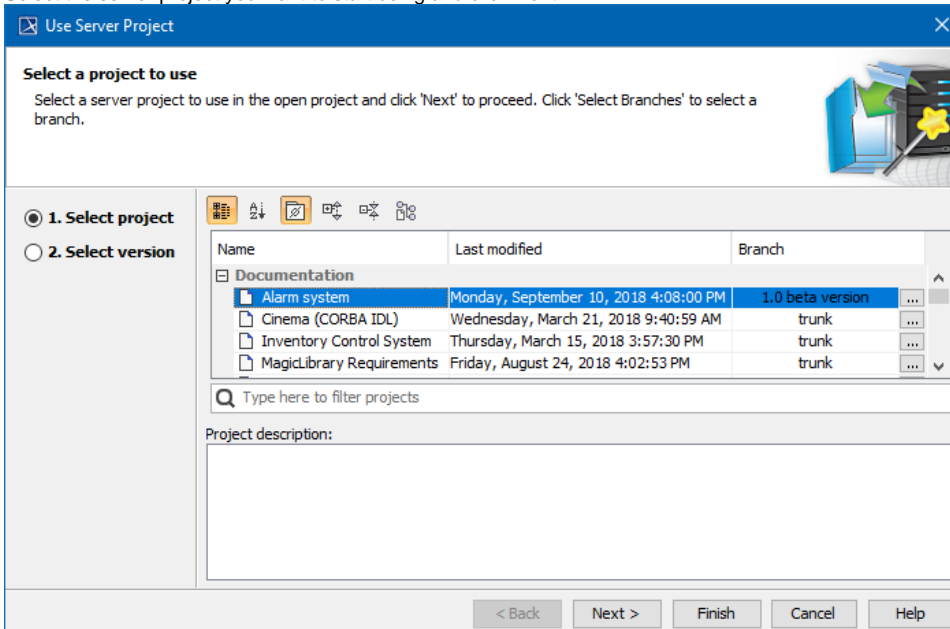
If you want to use an element from either a local or Teamwork Cloud (TWCloud) project, you must use that project in your project first. Projects can be used only in the read-only mode.

To start using a server project in your project

1. Select one of the following:
 - **Options > Project Usages**
 - **Collaborate > Project Usages > Project usages**The **Project Usages** dialog opens.
2. Click the  button and then select **Use Server Project** (see the following figure). The **Use Server Project** wizard opens.



3. Select the server project you want to start using and click **Next**.





Directly/Indirectly used projects

The selected project is treated as a directly used project. A project used by a used project is treated as an indirectly used project.



Search bar

Use the search bar to filter projects according to:

- Project Version (together with the commit tags)
 - Author
 - Comment
4. Select a version of the server project to use and click **Finish** (see the following figure). The wizard closes.

Use Server Project

Select a project to use

Select a server project to use in the open project and click 'Next' to proceed. Click 'Select Branches' to select a branch.

☐ 1. Select project
☒ 2. Select version

Project Version	Author	Date	Comment
Today			
9	Administrator	Monday, September 10, 2018 4:08:00 PM	Reverted from version 7
8 [Major]	Administrator	Monday, September 10, 2018 3:43:56 PM	Added Class diagram
7	Administrator	Monday, September 10, 2018 3:40:24 PM	Auto-migrated due to profi...
6	Administrator	Monday, September 10, 2018 12:51:07 PM	Basic system is created.
This year			
5	Administrator	Wednesday, July 4, 2018 5:48:13 PM	Auto-migrated due to profi...
4	Administrator	Tuesday, June 12, 2018 4:48:14 PM	Auto-migrated due to profi...
3	Administrator	Tuesday, April 3, 2018 4:34:46 PM	Element added
2	Administrator	Friday, March 30, 2018 5:46:44 PM	Created Activity diagram
1	Administrator	Thursday, March 15, 2018 4:07:01 PM	

Type here to filter project versions

☐ Notify on

< Back Next > Finish Cancel Help

5. Wait while the usage to the selected project is established.
6. View the selected server project added to the usages of your project In the **Project Usages** dialog.

Project Usages

Specify project usage options

See all project usages in the model. In this dialog, you can add a new used project, modify an existing usage, or update your project usages to the latest versions. To modify an existing usage, select a project on the left side, change its options on the right side, or use the commands in the dialog toolbar. Make sure you lock the project usage for modification.

MagicLibrary Requirements

Project Type: Server Project

Version: [trunk] #1/1

Notify on: ☒ Any New Version

Origin: twdcloud:/4832c447-500c-4f66-a37a-f4c03e94895c/fe8a1739-c3f7-44b2-9944

Open

OK Cancel Help

The used project version shows which version is used and the latest project version (for example, #2/3 means project version 2 is used but version 3 is the latest project version).

Select **Notify on Any New Version** to get instant notifications about changes to used projects to ensure they are always up to date.



Used project

Please note, the whole content of a used project is added to the main project.

7. Click **OK** to close the dialog.

The selected server project also appears in the Model Browser, under the package *Project Usages*.

Once the usage to the project is established, you can start using its elements. For example, you can select them as types in your project.

Establishing usage to a local project is very similar. In this case, you don't have to select the project version, since local projects don't have them.

Related pages

- [Editing the content of a used project](#)
- [Changing the used project version](#)
- [Importing the content of a used project into your project](#)
- [Stop using the project in your project](#)