

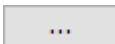
# Creating contextual relationships

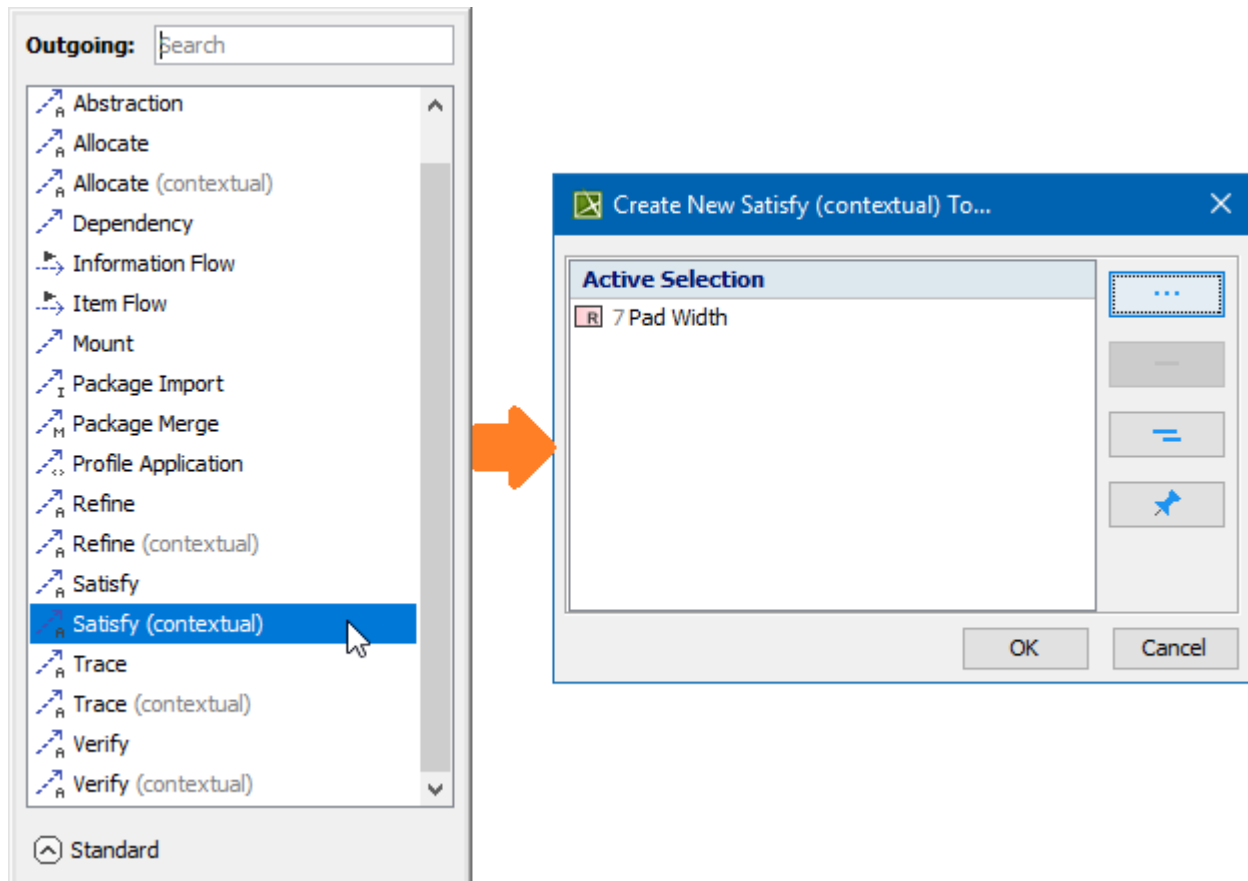
Once you enable the creation of Contextual Relationships in the **Project Options** dialog, you can start creating them immediately.

You can create Contextual Relationships from multiple places in your modeling tool:

- [Create Relation dialog](#)
- [Dependency Criteria dialog](#)
- [Smart manipulator toolbar](#)
- [Structure tab](#)
- [Diagram palette](#)

To create contextual relationships from the **Create Relations** dialog

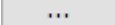
1. In the [Model Browser](#), diagram pane, or table, right-click an element.
2. Click **Create Relation** > **Outgoing/Incoming** and select the contextual relationship type to create. The **Create New <relation name> (contextual) To / From** dialog opens.
3. Do one or more of the following:
  - In the Model Browser, select the element to create a relationship to / from.
  - On a diagram, select the element to create a relationship to / from.
  - In the **Create New <relation name> (contextual) To / From** dialog, click . In the opened **Create New <relation name> (contextual) To / From** dialog, choose the element to create a relationship to / from.
4. Click **OK**.




Creating contextual relationships using the Create Relations dialog

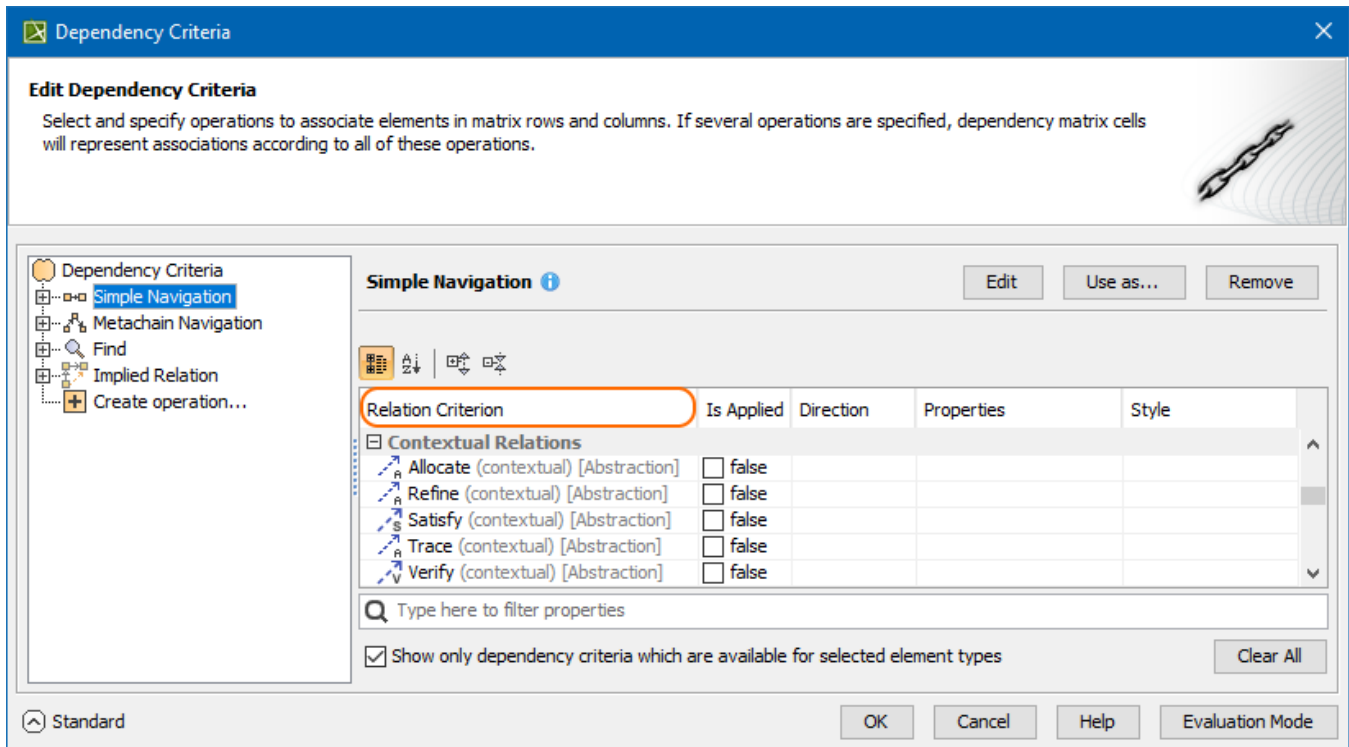
[Learn more about creating relationships >>](#)

To create contextual relationships in **Dependency Matrices**

1. In the **Criteria** area of the [Dependency Matrix](#), next to **Dependency Criteria**, click .


2. Click the **Simple Navigation** operation and scroll down to the **Contextual Relations** category.
3. Under **Relation Criterion**, select the contextual relationship type to create.
4. When you are done, click **OK**.

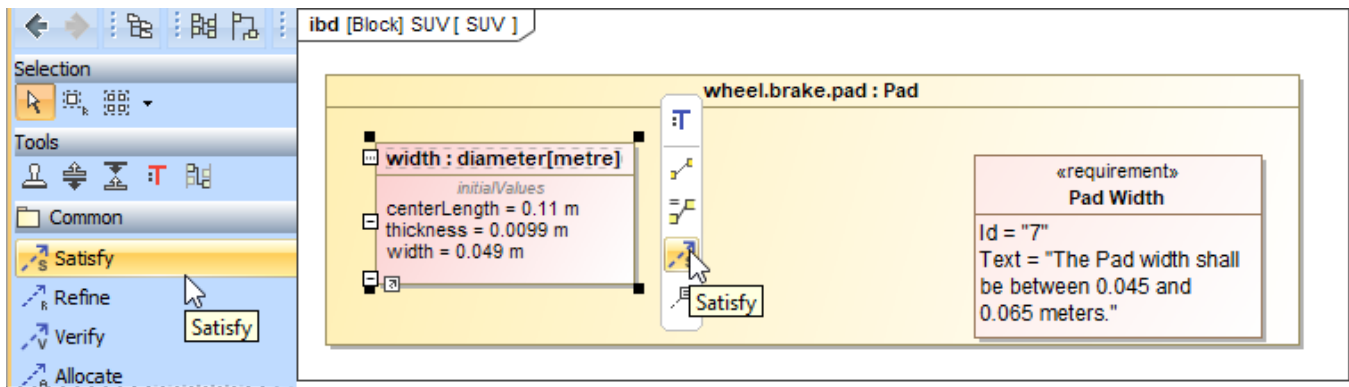
 Contextual relationships can only be created in **Structure** tree-view dependency matrices.



Creating contextual relationships using the Dependency Criteria dialog


To create contextual relationships from the **diagram palette** or **smart manipulator toolbar**

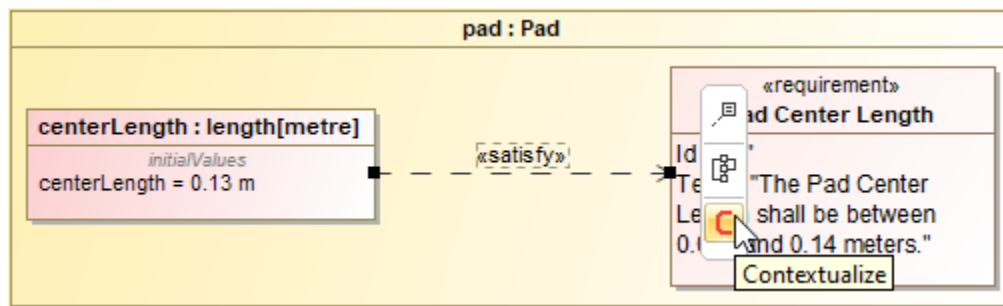
1. Do one of the following:
  - On the diagram palette, select the relationship type to create.
  - On the diagram pane, select the relationship end and click  in the smart manipulator toolbar.
2. Select the appropriate elements on the diagram pane.



Creating contextual relationships from the diagram palette or smart manipulator toolbar


To contextualize relationships from the **smart manipulator toolbar**

1. In the diagram pane, click on the existing relationship. The smart manipulator toolbar appears.
2. Click  to contextualize the selected relationship.



Contextualizing relationships using the smart manipulator toolbar



You can decontextualize the existing contextual relationship by clicking  (Decontextualize) in the smart manipulator toolbar.