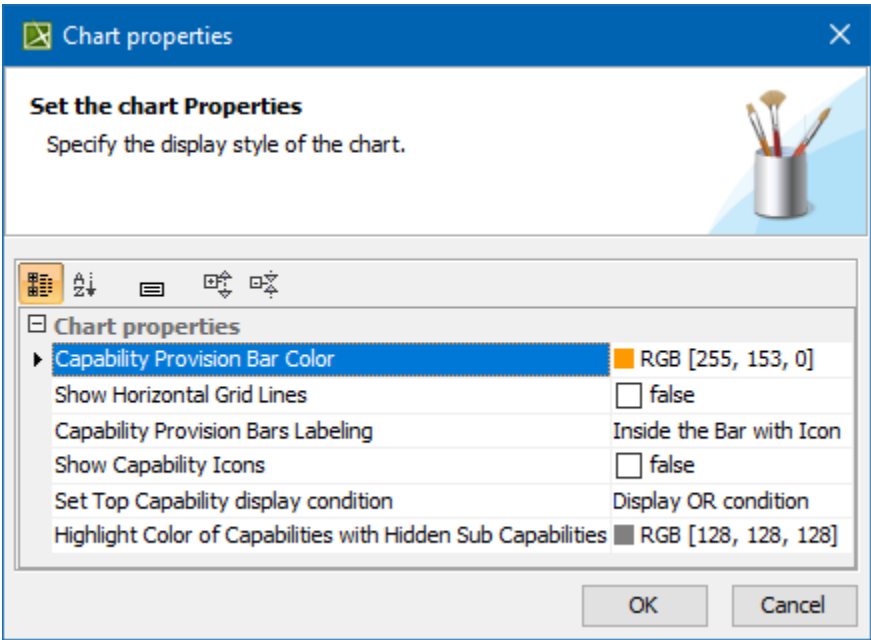


Customizing Gantt chart properties


On this page

- [Top Capability display conditions](#)
- [Highlighting Capabilities with hidden Sub Capabilities](#)

When you create the Gantt Charts, you can easily customize its properties. You can change Capability Provision bar color, choose whether to show or hide the horizontal grid lines, set the top capability display conditions, and so on.



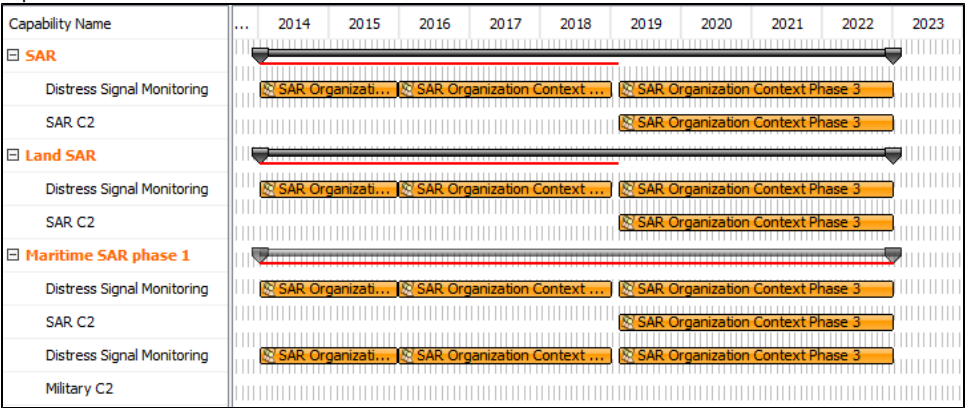
To open the Chart properties dialog, do one of the following

- Right-click the Gantt chart pane. From the shortcut menu, select **Chart Properties**.
- In the chart toolbar, click  and then **Chart Properties**.

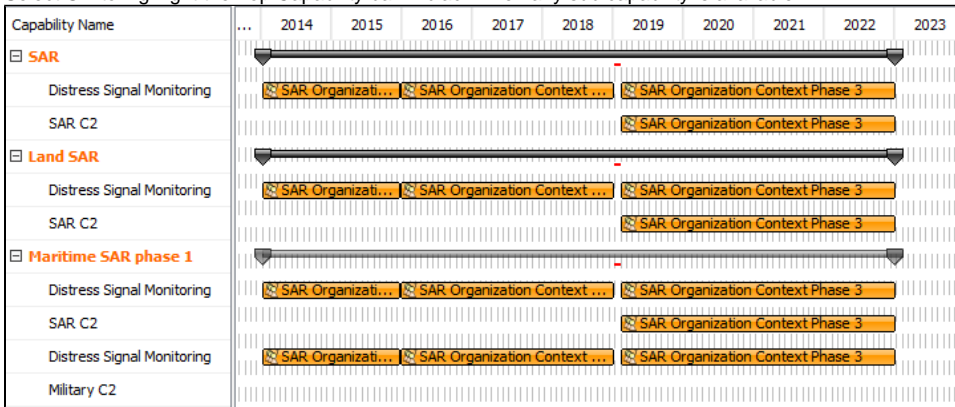
Top Capability display conditions

In the **Chart properties** dialog, you can choose a condition to highlight the availability of capabilities. There are two available options:

- Select **AND** condition to highlight the Top Capability bar in red when any capability is unavailable in that period of time, and in black when all sub capabilities are available.



- Select **OR** to highlight the Top Capability bar in black when any sub capability is available.

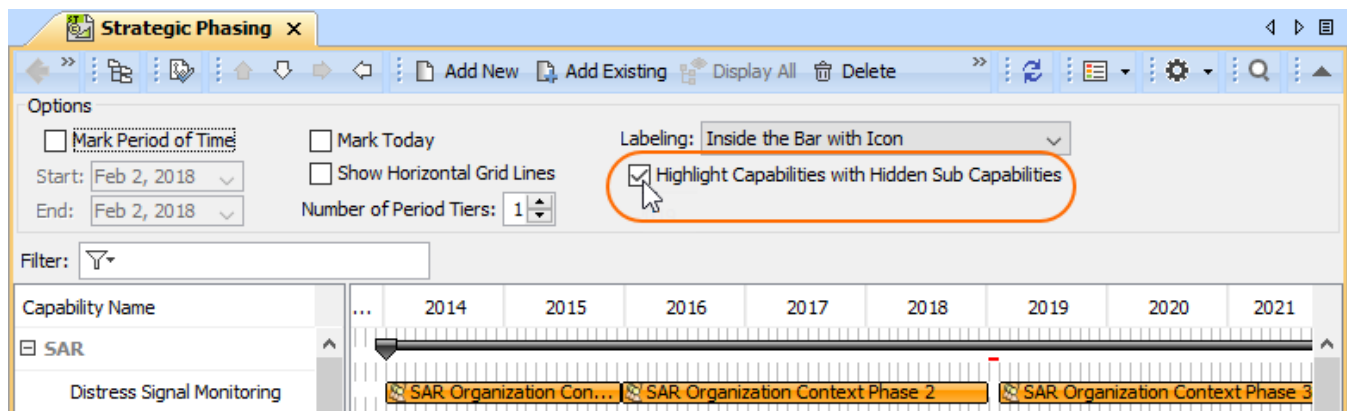


Highlighting Capabilities with hidden Sub Capabilities

When a Capability, displayed in the Gantt chart has Sub Capabilities, those Sub Capabilities can be removed from the chart. In such case, when Sub Capabilities are removed, the main Capability can be highlighted.

To start highlighting Capabilities with removed Sub Capabilities

- In the chart Options area, click to select a checkbox near **Highlight Capabilities with Hidden Sub Capabilities**.



The default color of the highlighted Capabilities is gray, but you can change it.

To change a highlight color

1. Open the **Chart properties** dialog.
2. In the **Highlight Color of Capabilities With Hidden Sub Capabilities** property cell and click ... to select a new color.

Related diagrams

- [CV-3 Capability Phasing](#)
- [MODAF. StV-3 Capability Phasing](#)
- [NCV-3 Capability Phasing](#)
- [Pr Configuration Management](#)
- [Strategic Phasing diagram](#)