

# Operational Connectivity

## Description

The Operational Connectivity (Op-Cn) table summarizes Operational Exchanges between Operational Performers of information, systems, personnel, energy etc. and the Operational Activities that produces and consumes them. Measurements can optionally be included.

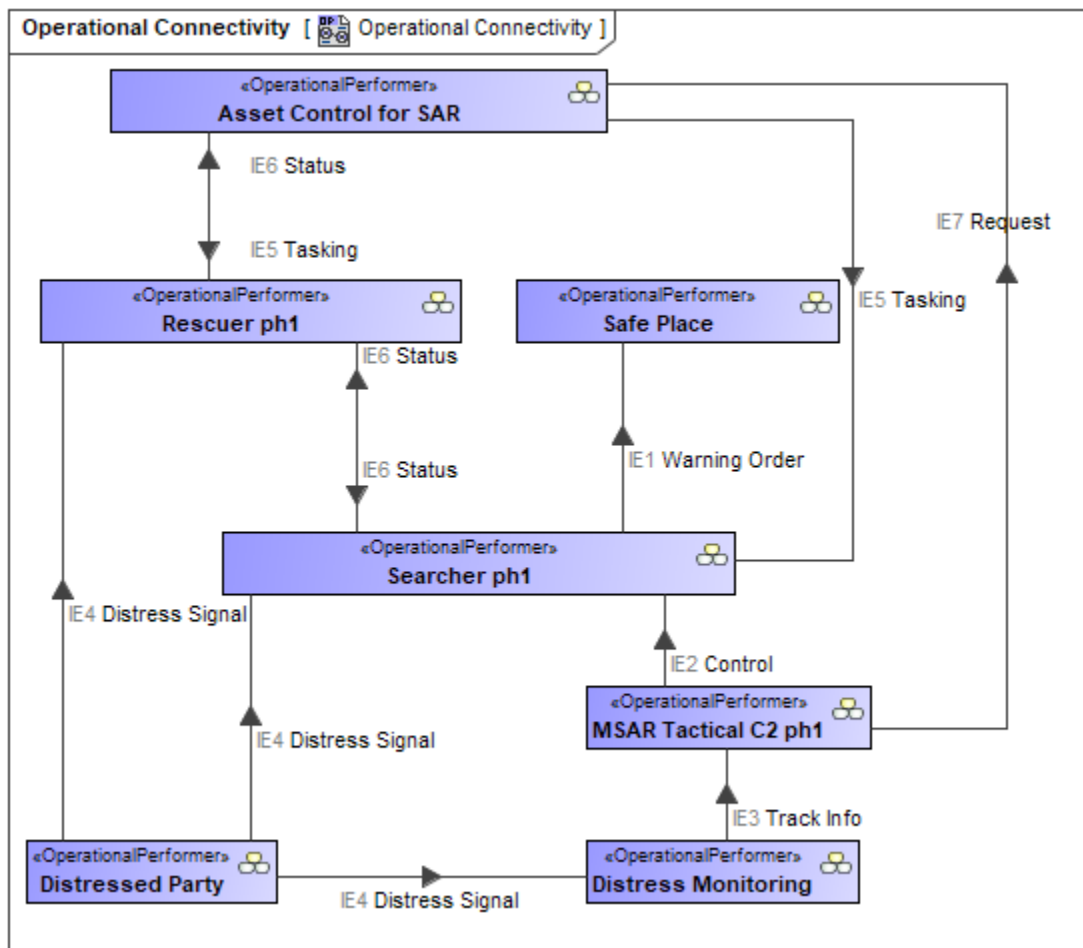
The Operational Connectivity Internal diagram describes a logical pattern of resource (information, funding, personnel, or materiel) internal flows.

## Implementation

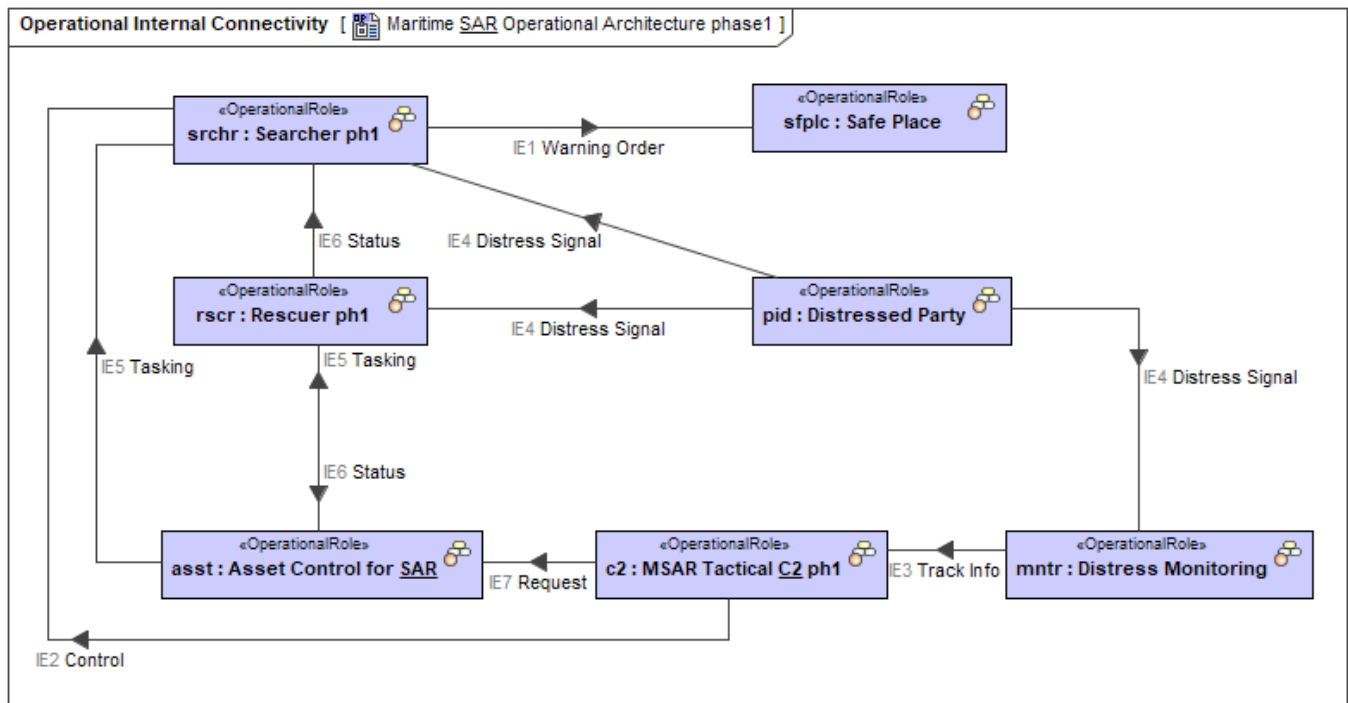
The Operational Connectivity (Op-Cn) is represented by:

- [Operational Connectivity diagram](#).
- [Operational Internal Connectivity diagram](#).
- [Operational Connectivity Table](#). An Operational Connectivity Table represents exchanges between Operational Performers.
- [Operational Role-based Connectivity Table](#). A role-based table represents exchanges between Operational Roles.
- Reports:
  - Operational Connectivity Table Excel Spreadsheet (.xlsx).
  - Operational Role-based Connectivity Table Excel Spreadsheet (.xlsx).

## Samples



An example of the Operational Connectivity diagram



An example of the Operational Internal Connectivity diagram

#	Exchange ID	Operational Exchange Item	Sending Operational Performer	Receiving Operational Performer	Producing Operational Activity	Consuming Operational Activity
1	OE1	IE6 Warning Order	Search Node	Place Of Safety	Send Warning Order	Process Warning Order
2	OE2	IE9 Medical Condition	Search Node	Rescue Node	Monitor Health	Provide Medical Assistance Recover Victim
3	OE3	IE7 Distress Signal	Person In Distress	Rescue Node	Send Distress Signal	Receive Distress Signal
4	OE4	IE7 Distress Signal	Person In Distress	Monitoring Node		
5	OE5	IE4 Control Order	Tactical C2 Node	Rescue Node		
6	OE6	IE3 Track Info	Monitoring Node	Tactical C2 Node		
7	OE7	IE4 Control Order	Tactical C2 Node	Search Node		
8	OE8	IE5 Request	Tactical C2 Node	SAR Asset Controller		
9	OE9	IE2 Task	SAR Asset Controller	Rescue Node		
10	OE12	IE2 Task	SAR Asset Controller	Search Node		
11	OE13	IE7 Distress Signal	Person In Distress	Search Node	Send Distress Signal	Receive Distress Signal

An example of the Operational Connectivity Table

#	Exchange ID	Operational Exchange Item	Sending Role	Sending Operational Performer	Receiving Role	Receiving Operational Performer	Producing Operational Activity	Consuming Operational Activity
1	OE1	IE6 Warning Order	Searcher::Search Node	Search Node	POS::Place Of Safety	Place Of Safety	Send Warning Order	Process Warning Order
2	OE2	IE9 Medical Condition	Searcher::Search Node	Search Node	Rescuer::Rescue Node	Rescue Node	Monitor Health	Provide Medical Assistance Recover Victim
3	OE2	IE9 Medical Condition	Searcher::Search Node	Search Node	Rescuer DS::Rescue Day Shift	Rescue Node	Monitor Health	Provide Medical Assistance Recover Victim
4	OE2	IE9 Medical Condition	Searcher::Search Node	Search Node	Rescuer NS::Rescue Night Shift	Rescue Node	Monitor Health	Provide Medical Assistance Recover Victim
5	OE3	IE7 Distress Signal	Victim::Person In Distress	Person In Distress	Rescuer::Rescue Node	Rescue Node	Send Distress Signal	Receive Distress Signal
6	OE3	IE7 Distress Signal	Victim::Person In Distress	Person In Distress	Rescuer NS::Rescue Night Shift	Rescue Node	Send Distress Signal	Receive Distress Signal
7	OE3	IE7 Distress Signal	Victim::Person In Distress	Person In Distress	Rescuer DS::Rescue Day Shift	Rescue Node	Send Distress Signal	Receive Distress Signal
8	OE4	IE7 Distress Signal	Victim::Person In Distress	Person In Distress	MN::Monitoring Node	Monitoring Node		
9	OE6	IE3 Track Info	MN::Monitoring Node	Monitoring Node	TC2N::Tactical C2 Node	Tactical C2 Node		
10	OE7	IE4 Control Order	TC2N::Tactical C2 Node	Tactical C2 Node	Searcher::Search Node	Search Node		
11	OE8	IE5 Request	TC2N::Tactical C2 Node	Tactical C2 Node	SAR AC::SAR Asset Controller	SAR Asset Controller		
12	OE9	IE2 Task	SAR::SAR Asset Controller	SAR Asset Controller	Rescuer::Rescue Node	Rescue Node		
13	OE9	IE2 Task	SAR::SAR Asset Controller	SAR Asset Controller	Rescuer DS::Rescue Day Shift	Rescue Node		
14	OE9	IE2 Task	SAR::SAR Asset Controller	SAR Asset Controller	Rescuer NS::Rescue Night Shift	Rescue Node		
15	OE12	IE2 Task	SAR::SAR Asset Controller	SAR Asset Controller	Searcher::Search Node	Search Node		
16	OE13	IE7 Distress Signal	Victim::Person In Distress	Person In Distress	Searcher::Search Node	Search Node	Send Distress Signal	Receive Distress Signal

An example of the Operational Role-based Connectivity Table

#### Related elements

- [Operational Performer](#)
- [Operational Role](#)
- [Information Element](#)
- [Operational Activity](#)
- [Exchange](#)
- [Geo Political Extent Type](#)
- [Is Capable To Perform](#)
- [Measurable Element](#)
- [Measurement Set](#)
- [Operational Activity Action](#)
- [Operational Activity Edge](#)
- [Operational Agent](#)
- [Operational Connector](#)
- [Operational Exchange](#)
- [Operational Exchange Item](#)
- [Operational Interface](#)
- [Operational Port](#)

#### Related procedures

- [Working with Operational Connectivity diagram](#)
- [Working with Operational Internal Connectivity diagram](#)
- [Working with Operational Connectivity Table](#)
- [Working with Operational Role-based Connectivity Table](#)
- [Displaying Custom Measurements](#)
- [Generating document based reports](#)