

MODAF. SOV-5 Service Functionality Flow

Description

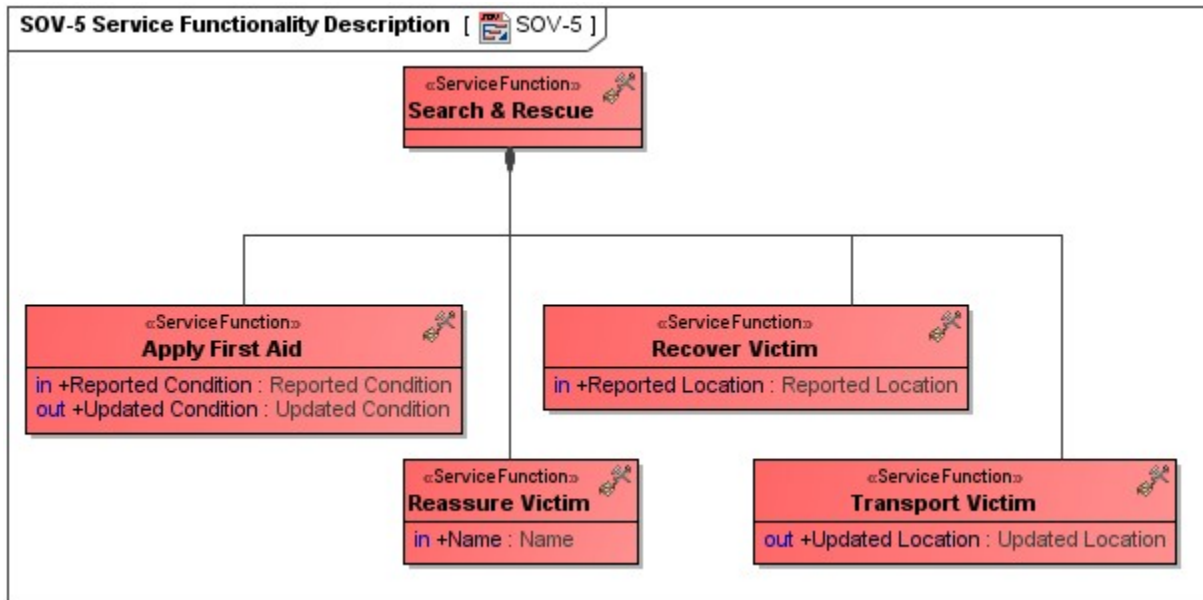
The Service Functionality View (SOV-5) defines the behavior of a service in terms of the functions it is expected to perform. SOV-5 is the key behavioral specification for services. Equivalent in nature to OV-5 and SV-4, it specifies a set of functions that a service implementation is expected to perform. It is especially useful during the initial exploration of the requirements for a service.

Implementation

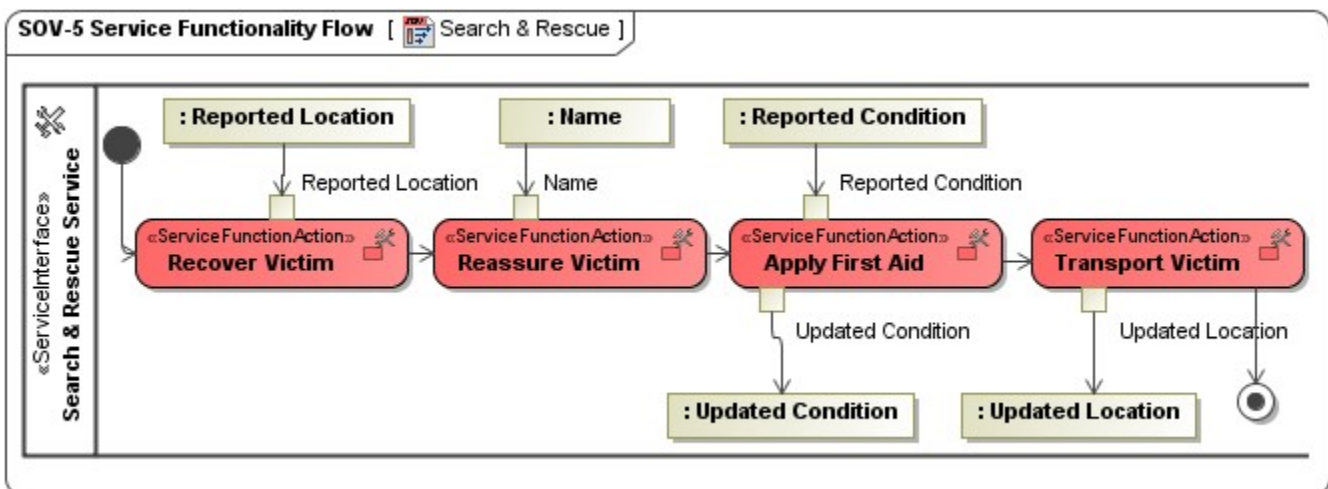
SOV-5 can be represented using:

- SOV-5 diagram for the Operational Activity flows. This diagram is based on the UML Activity diagram.
- SOV-5 diagram based on the UML Class diagram.
- UML Activity diagram.
- SysML Activity diagram.
- UML Class diagram.

Sample



Service Functionality Description



Fragment of SOV-5 Service Functionality Flow

Related views

An SOV-5 is the key behavioral specification for services. It is equivalent in nature to the OV-5 and SV-4. It specifies a set of functions that a service implementation is expected to perform.

An SOV-5 specifies the required functionality that an implementation of a service is expected to have – the implementation is represented in the SV-1 and SV-4.

Related elements

- [Service Function](#)
- [Service Function Action](#)
- [Function Edge](#)
- [Service Method](#)
- [Service Parameter](#)
- [Service Interface](#)

Related procedures

- [Creating SOV-5 Service Functionality Description diagram](#)
- [Creating SOV-5 Service Functionality Flow diagram](#)
- [Creating Process Flow Diagrams From Compositions or Aggregations Defined in Process Diagrams](#)