

# 19.0 LTR SP3 Version News



Released on: November 21, 2019

The SP3 release adds significant improvements to existing features: 1) the **Product Line Engineering** plugin and **Suspect Links** are expanded by implementing new capabilities; 2) we have introduced a brand new **ISO 26262 Functional Safety Plugin**; 3) users can now create **Custom Hierarchy in Tables**; and finally, 4) the latest MagicDraw version comes with bug fixes and many new enhancements to other features.

Collaborative modeling capabilities are extended with the main focus on work efficiency and agile modeling. The **Lock-Free model editing** mode and the **Disconnected Team Collaboration UI** are presented in this release. Additionally, other improvements have been made to enhance usability in **Merge, Change Sets, Hidden Packages**, and other collaboration-oriented features.

Download the newest MagicDraw version at [nomagic.com](http://nomagic.com) or contact your sales representative. Don't forget to give us your feedback on [LinkedIn](#), [Twitter](#), or [Facebook](#). For further information, please check the latest [documentation](#) and additional [resources](#).

## Modeling and Infrastructure

- [Model-Based Product Line Engineering](#)
- [ISO 26262 Functional Safety Plugin](#)
- [Custom Hierarchy in Tables](#)
- [Suspect Links](#)
- [Further Improvements](#)

## Collaboration

- [Lock-Free Model Editing](#)
- [Disconnected Team Collaboration Usability](#)
- [Further Merge Usability Improvements](#)
- [Other Enhancements](#)

## Other Features

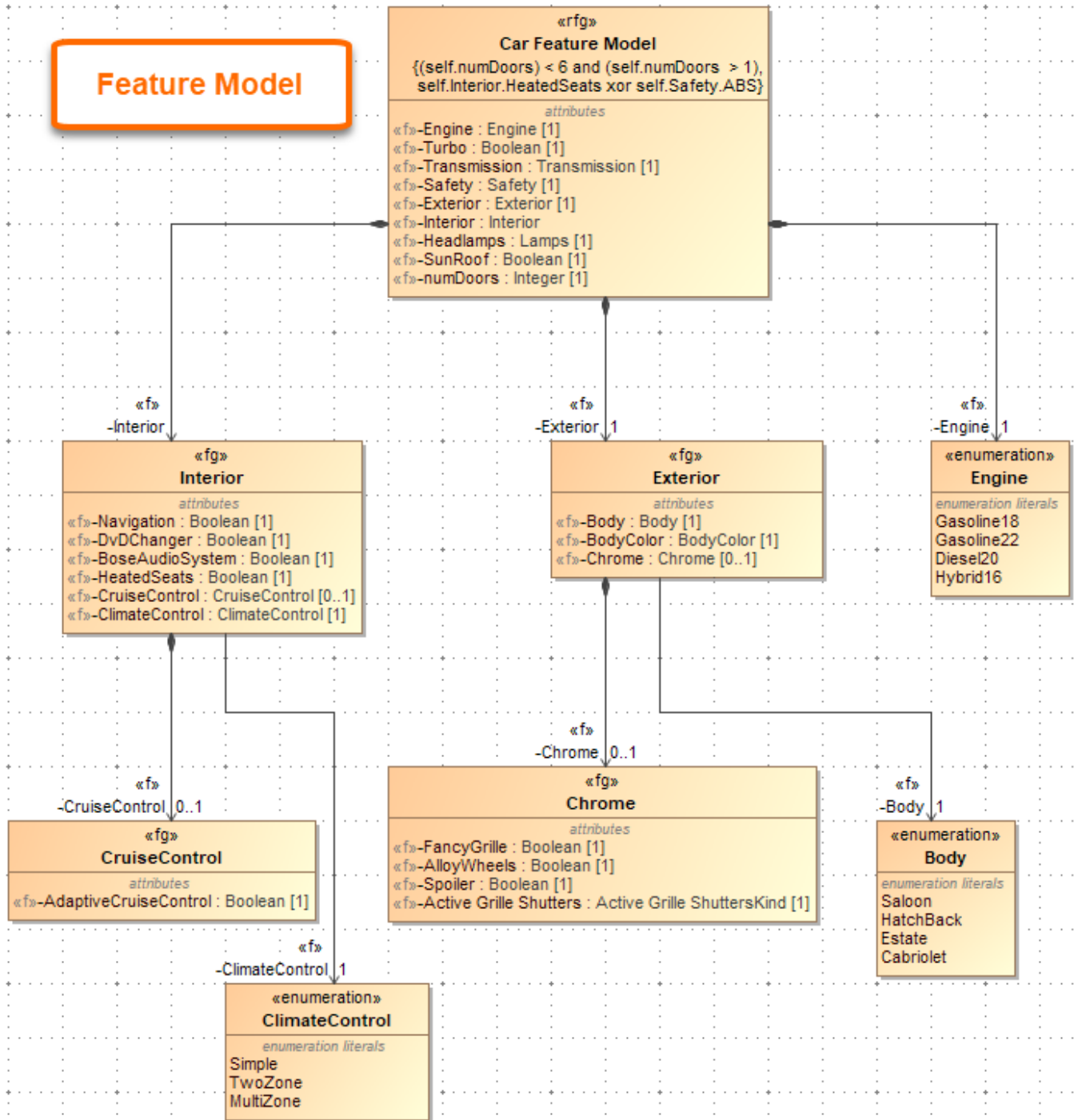
- [Report Wizard](#)
- [Key Issues Fixed](#)

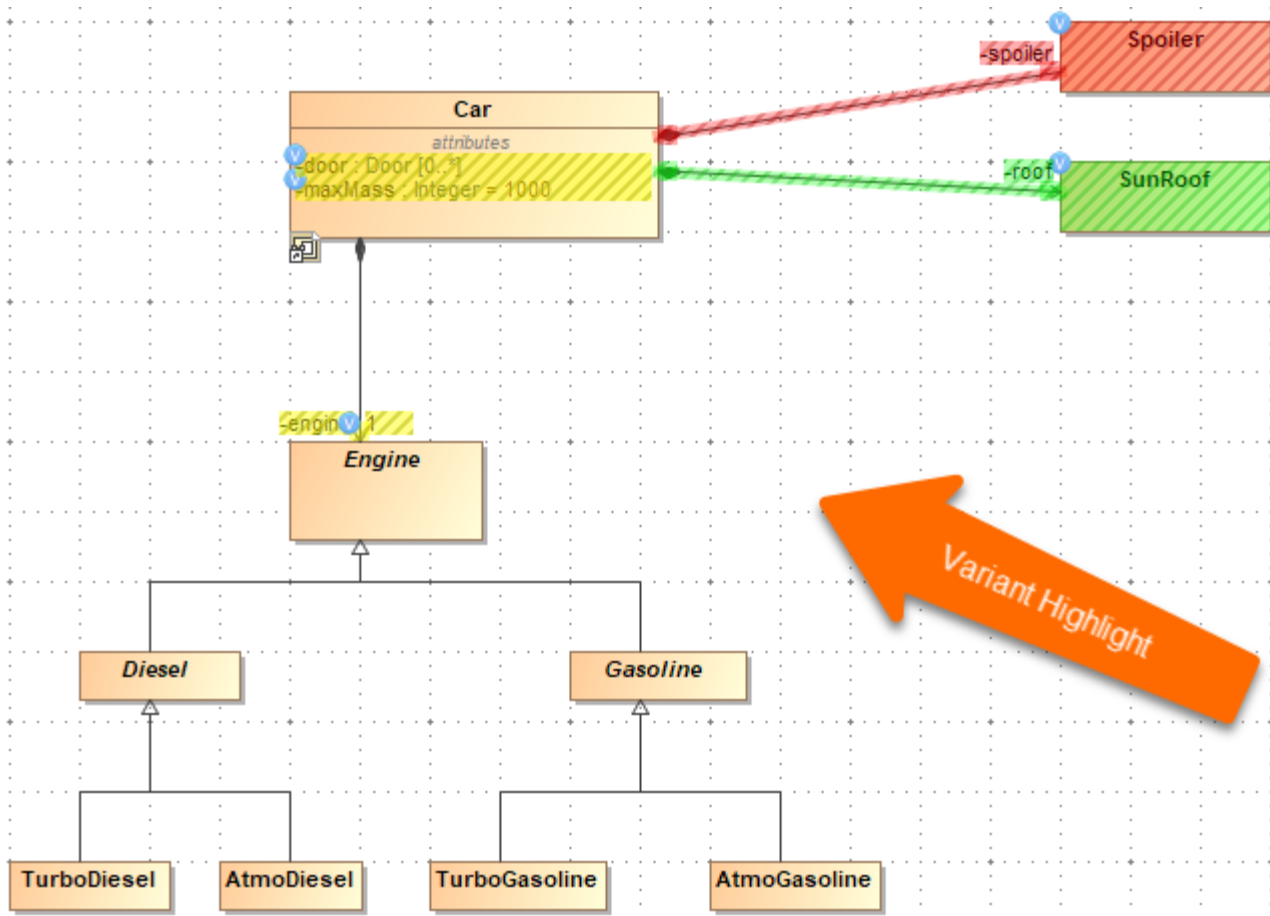
## Modeling and Infrastructure

### Model-Based Product Line Engineering

Product Line Engineering has been significantly extended by implementing the Model-Based Product Line Engineering (MBPLE) capability. In addition to integration with PLE tools (Big Lever Software Gears and Pure Variants), it is now possible to perform PLE in modeling tools without using third-party tools.

## Feature Model





[Learn more about MBPLE >>](#)

## ISO 26262 Functional Safety Plugin

We are proud to introduce the brand new ISO 26262 Functional Safety Plugin. This plugin tightly integrates functional safety with MBSE (requires SysML plugin or Cameo Systems Modeler) and supports the ISO 26262 standard (the adaptation of IEC 61508) designed to comply with needs specific to the application sector of Electric & Electronic (E/E) systems within road vehicles. The ISO 26262 Functional Safety Plugin provides end-users with the means to perform hazard analysis and risk assessment:

- Define Malfunctioning Behaviors for each Function
- Specify an Operational Condition Library
- Define Operational Situations as a combination of Conditions
- Combine Malfunctioning Behaviors with Operational Situations to define Accident Scenarios
- Specify a Hazard Library
- Define System Level and Vehicle Level Effects
- Combine Hazards, Effects, and Accident Scenarios into Hazardous Events

The plugin also provides a way to define functional safety concepts (safety requirements and perform ASIL decomposition) as well as generate safety reports.

HARA

Add Sibling
Add Nested
Add Existing...
Delete
Remove From Table
Nest
Unnest

Criteria

Element Type: Situation
Scope (optional): HazardousEvent
Filter:

#	Name	Accident Scenario	Hazard	Vehicle Level Effect	System Level Effect	ASIL	Safety Goal
1	HazardousEvent						
2	Steering Hazard	Potential for vehicle to depart the intended path/lane and collide with oncoming traffic or roadside objects before driver is able to control the situation. If steering produced unintended yaw momentum, could cause loss of control of the vehicle	Unintended Loss of Vehicle Lateral Motion Control Unintended Vehicle Lateral Motion/Unintended Yaw	Vehicle body tilts in wrong direction. Vehicle center of gravity is shifted towards the outside of the curve. High speed collision with another vehicle or object(s)	The steering system provides torque actuation unexpectedly when there is no driver request	D	1 Prevent Unintended Vehicle Lateral Motion
3	Delayed Tilt - Normal driving in curve	Vehicle entering a slight curve at approx. 0 degree vehicle body tilt angle. Low tilt angle is required but provided tilt is delayed.	Degraded Vehicle Stability	Vehicle body does not tilt (at first). Vehicle center of gravity does not move towards the center of the curve.	System tilts vehicle body after it is required	QM	
4	Inverted Tilt - Normal driving in curve	Vehicle entering a slight curve at approx. 0 degree vehicle body tilt angle. Low tilt angle is required but provided tilt is in opposite direction.	Degraded Vehicle Stability	Vehicle body tilts in wrong direction. Vehicle center of gravity is shifted towards the outside of the curve.	System tilts vehicle body in wrong direction.	A	

Show the description area to see all information about a Hazardous Event in one place

Delayed Tilt - Normal driving in curve

System Function
Tilt the Vehicle Body

Malfunctioning Behavior
Delayed
vehicle body tilt
Guide Word
Late

Hazard
Degraded Vehicle Stability

System Level Effect
System tilts vehicle body after it is required

Vehicle Level Effect
Vehicle body does not tilt (at first). Vehicle center of gravity does not move towards the center of the curve.

Safety Goal

**ASIL QM**  
C1 Since the curve is minimal, it is relatively easy to maintain vehicle stability. Driver can recognize the lack of immediate vehicle tilt and reduce speed.  
E2 Driving at high speed on slightly curvy roads is part of normal driving  
S3 Vehicle may hit obstacles at high speed

Vehicle Usage	Traffic And People	Location	Road Condition	Environmental Condition
Normal driving in curve				
Driving at Speed	Traffic Free Flow	Highway City Roads	AnyRoadCondition	AnyEnvironmentalCondition

Filter is not applied. 4 rows are displayed in the table.

A HARA Table allows you to define Hazardous Events as a combination of Hazards, Effects, and an Accident Scenario. The description area shows all the information about the selected Hazardous Event.

[Learn how to use the ISO 26262 Functional Safety Plugin >>](#)

## Custom Hierarchy in Tables

Modelers now have more freedom to decide how to organize elements in tables. Simply choose one of the tree-view options to display elements hierarchically and see the changes in the table structure reflect the criterion you have specified:

- **Containment:** displays the decomposition of elements related by Containment.
- **Structure:** displays the decomposition of Part properties related by Composition.
- **Custom:** displays the decomposition of elements related by any specified criteria.

Criteria

Element Type: OperationalSituation Scope (optional): RoadCondition

#	Name
1	RoadCondition
2	Road Widths
3	Road Friction
4	Wet
5	Snow
6	Ice
8	AnyRoadCondition

☐ Containment  
☐ Structure  
☒ Custom

Simple Navigation

Relation Criterion	Is Applied	Direction
Extension	<input type="checkbox"/> false	
Generalization	<input checked="" type="checkbox"/> true	Target To Source
Include	<input type="checkbox"/> false	

☒ Build Hierarchy  
☒ Expert

OK Cancel Help Evaluation Mode

Building a custom hierarchy in a table

[Learn more about building Custom Hierarchy in tables >>](#)

## Suspect Links

Stay up to date with the changes in your model by enabling the Suspect Links tracking. You can now track the changes applied to requirements linked to other model elements, as well as keep track of the changes that affect the selected model elements at the chosen end (source or target) of the specified dependencies.

Domain

- Problem
- Solution

«block» Climate Control Unit

«block» Control System

«block» Cooling Sy

«block» Control System

«block» Sensors System

«block» VCCS

Suspect Link

- Clear Suspicion
- Show Changes
- Show Block History
- Ignore for Me
- Ignore for Everyone
- Select in Validation Results

Quick Diff of Block Control System

Review differences

Review differences between the two versions of the element. Modified property values are marked in blue color, newly created property values are marked in green color, and deleted property values are marked in red color.

Properties	#6	#12 (current)
Block		
Status	proposed	approved

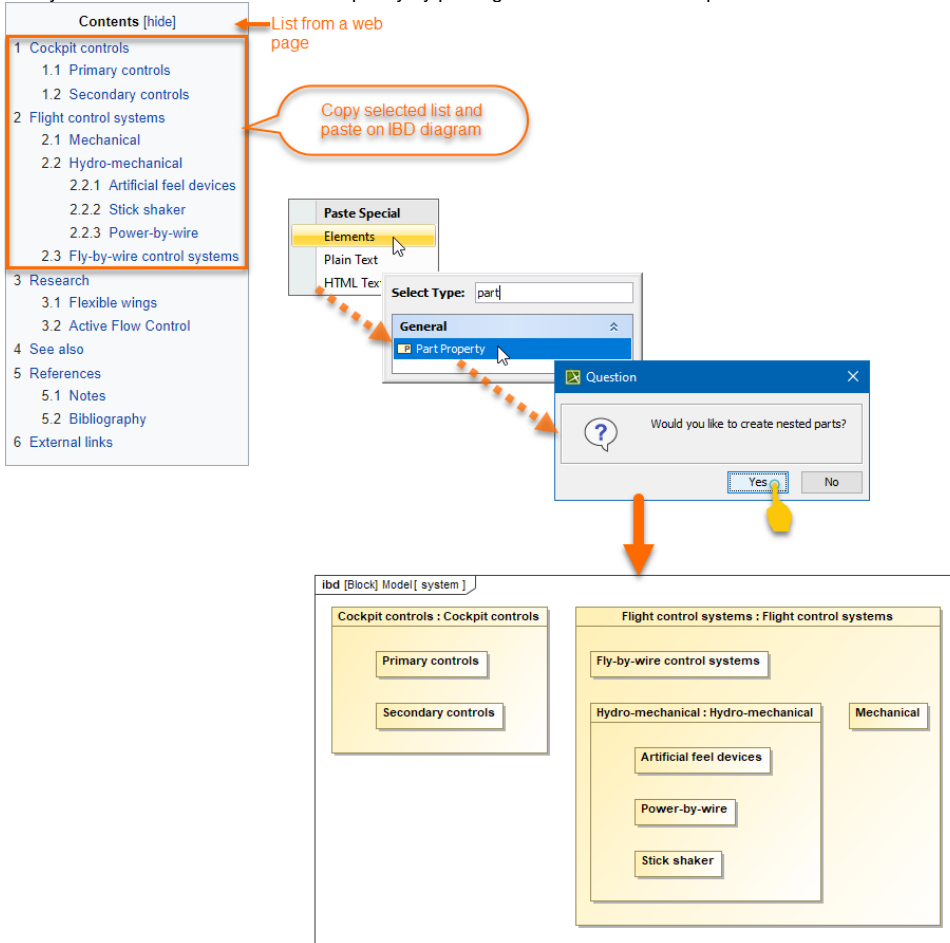
Close

Configuring Suspect Links tracking in the model

[Learn more about customizing Suspect Links tracking >>](#)

## Further Improvements

- Now you can create nested structures quickly by pasting structural lists on Composite Structure and Internal Block diagrams.



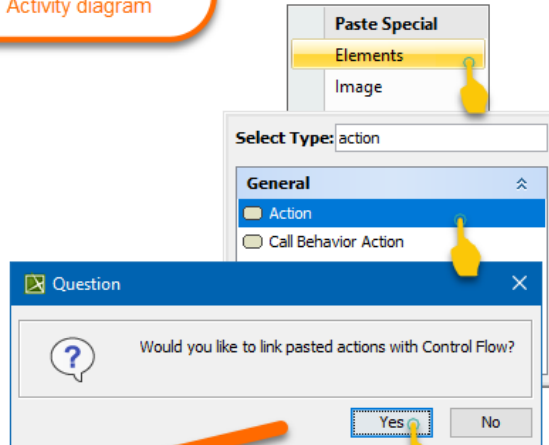
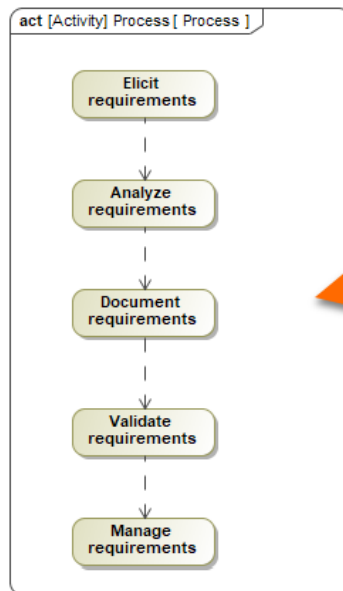
- To quickly create Activity Actions you can simply paste a copied list from any source of information. The Actions will be created and connected.

A list from the PowerPoint slide

### Key Activities

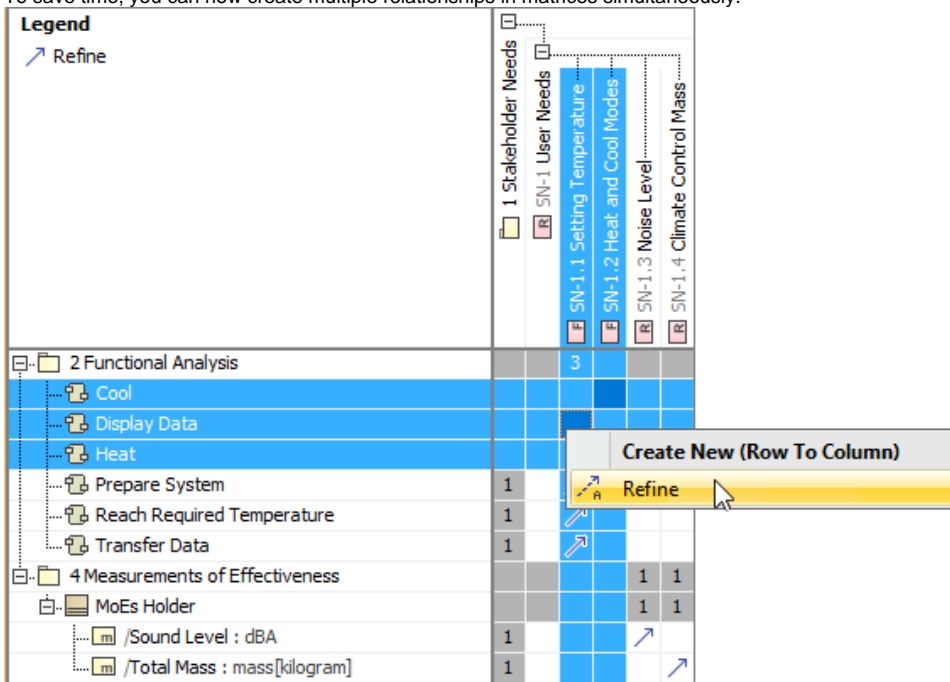
1. Elicit requirements
2. Analyze requirements
3. Document requirements
4. Validate requirements
5. Manage requirements

Copy and paste on  
Activity diagram

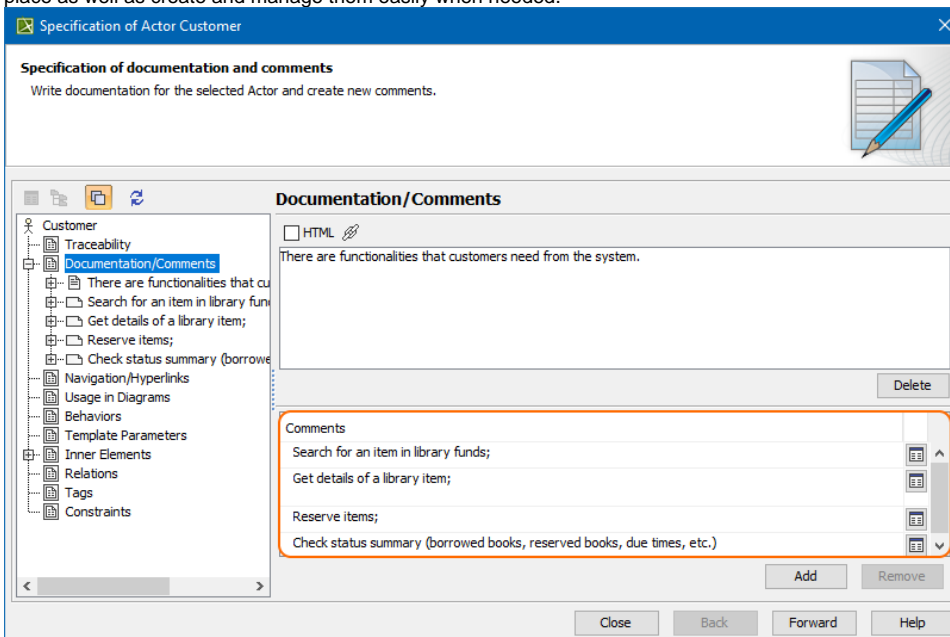


- ReqIF import/export has been improved as well. From now on, all existing images are attached to the model upon ReqIF import and added to the ReqIF file upon export.
- ID prefixes no longer come with the applied HTML styles. Instead, all IDs are imported/exported as plain text.
- It is now possible to specify the element properties to be shown on the shape by default in a few clicks.
- You can now wrap long text into multiple lines to display all of it in a table cell.
- The modeling tool now allows entering an unlimited number of entries into the table cell to enable displaying multiple values/plain text lines in a table cell.

- To save time, you can now create multiple relationships in matrices simultaneously.



- The redesigned Documentation property group in the Specification window allows you to have all comments annotating model elements in one place as well as create and manage them easily when needed.



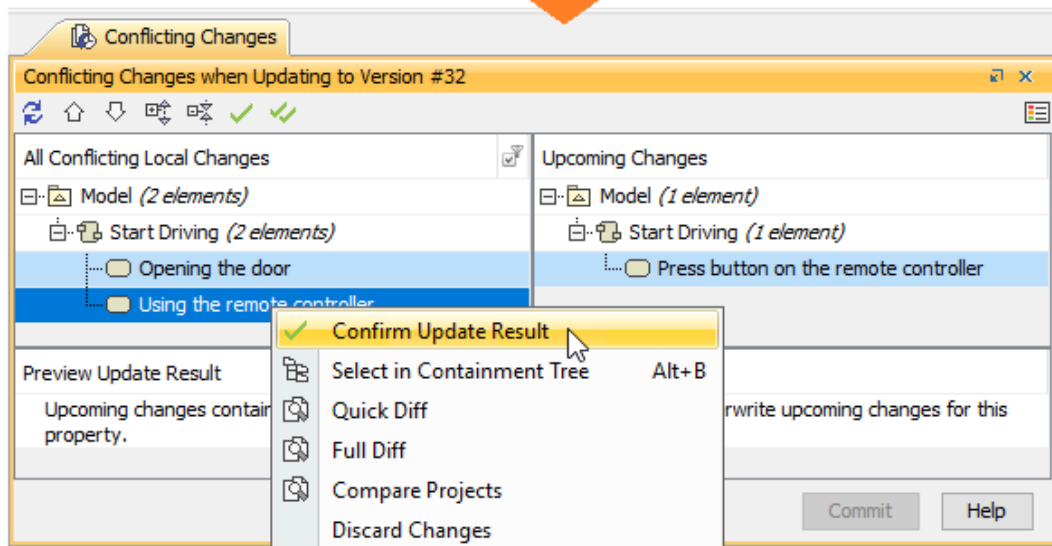
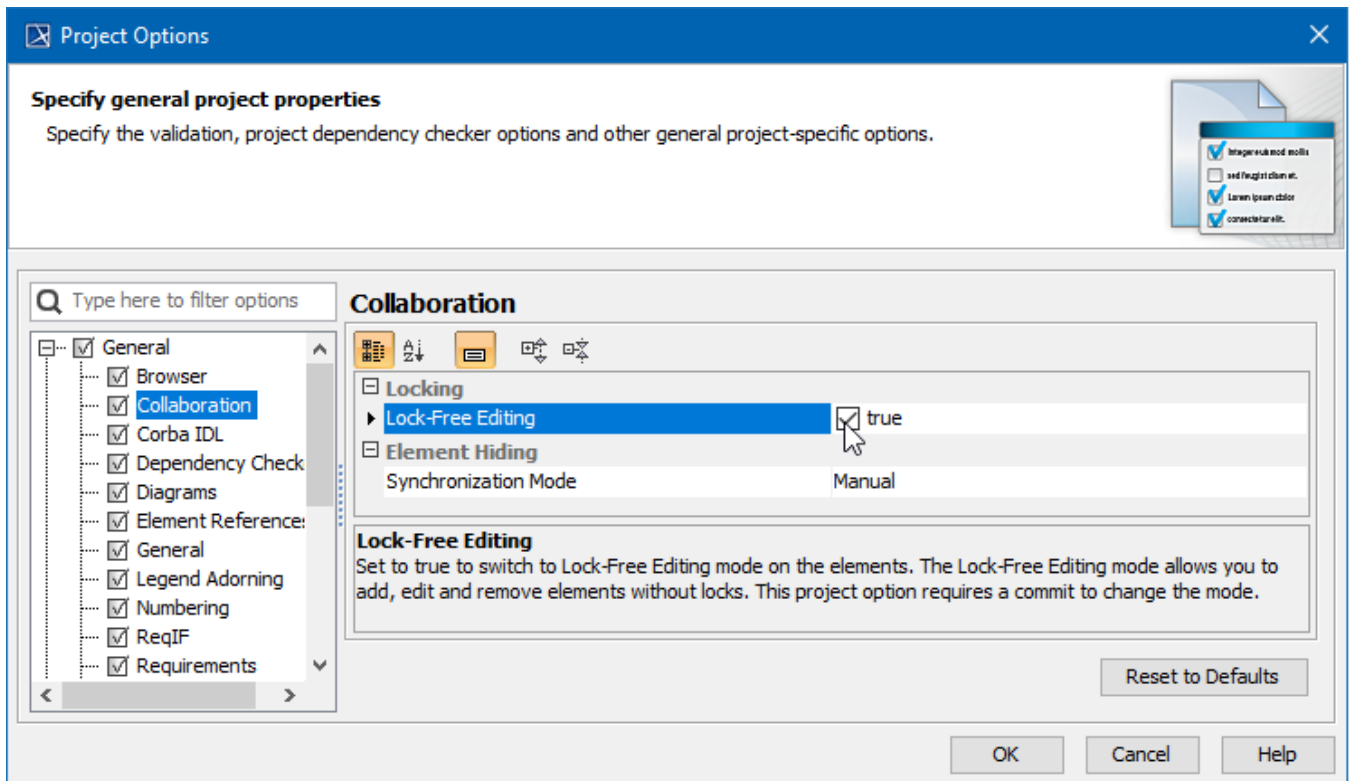
## Collaboration

### Lock-Free Model Editing

Locking elements prior to modifying them is now a thing of the past with the introduction of the Lock-free model editing mode (a.k.a an optimistic locking). You can continue using locks if that is what suits your team's needs best; however, the Lock-Free editing mode is a simple yet effective way to boost modeling productivity.

To start using the Lock-free editing mode, first enable it in the project, after which you can work on model elements freely, without locking them. Consequently, there is no need to wait until locks are released by other users to work on the same or related parts of the model. If conflicting changes occur, you can handle them in the Conflicting Changes panel to prevent data loss.





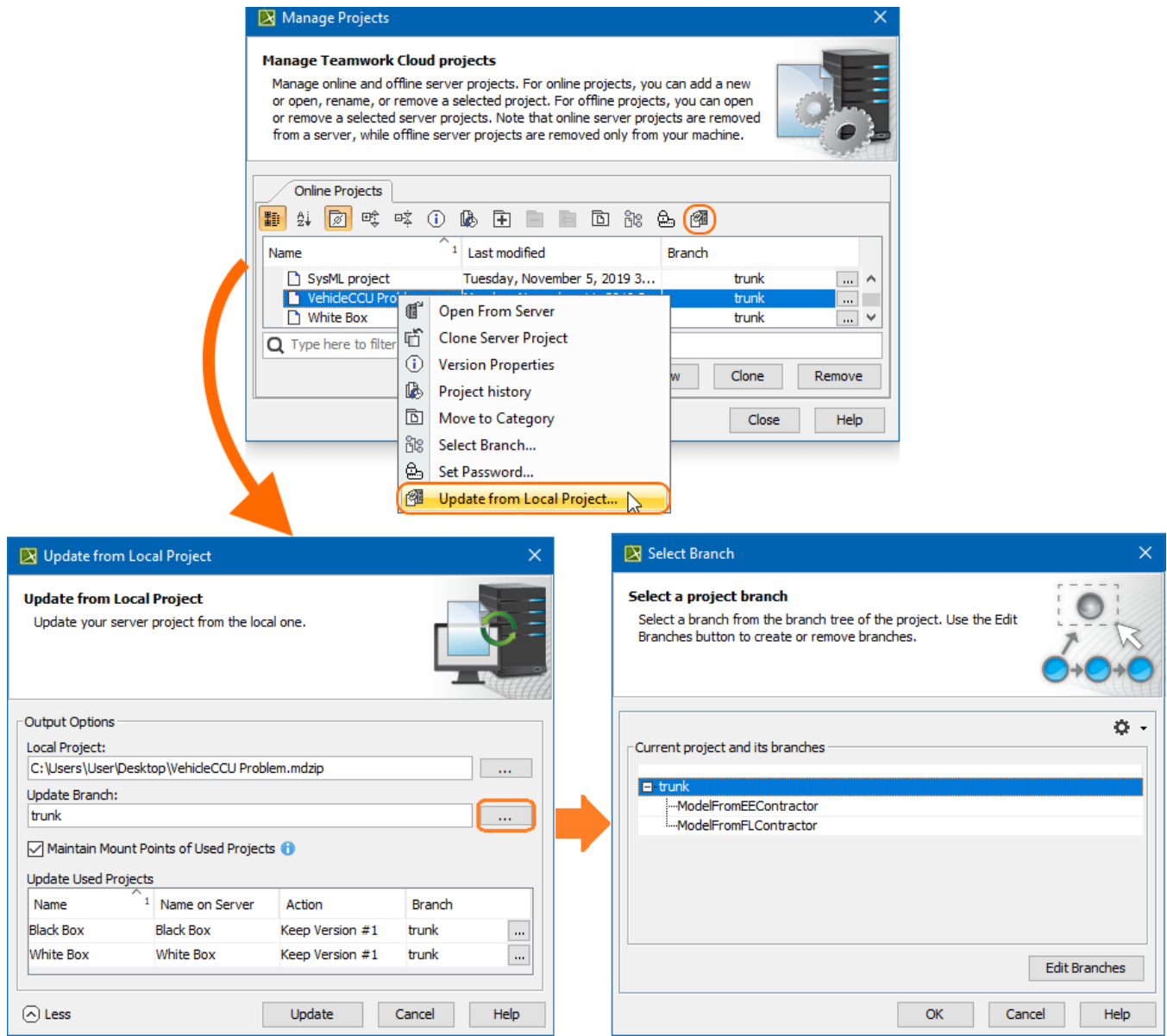
Handling conflicting changes in the Lock-free Editing mode

[Learn more about Lock-Free Editing mode >>](#)

## Disconnected Team Collaboration Usability

The Disconnected team collaboration UI has been rebuilt from the ground up. The improved feature usability allows distributed teams working on the same server project to update it with the changes from the locally exported .mdzip file more conveniently and with a significantly reduced amount of manual steps.

Not only can you now update projects without having the target ones open in the modeling tool, you can also manage used project changes more easily. Additionally, the newly-implemented smart branch selection algorithm ensures configuration-aware update of server projects and smoother project merging in the future.



Updating a server project from a local .mdzip file

[Learn more about Disconnected Team Collaboration usability >>](#)

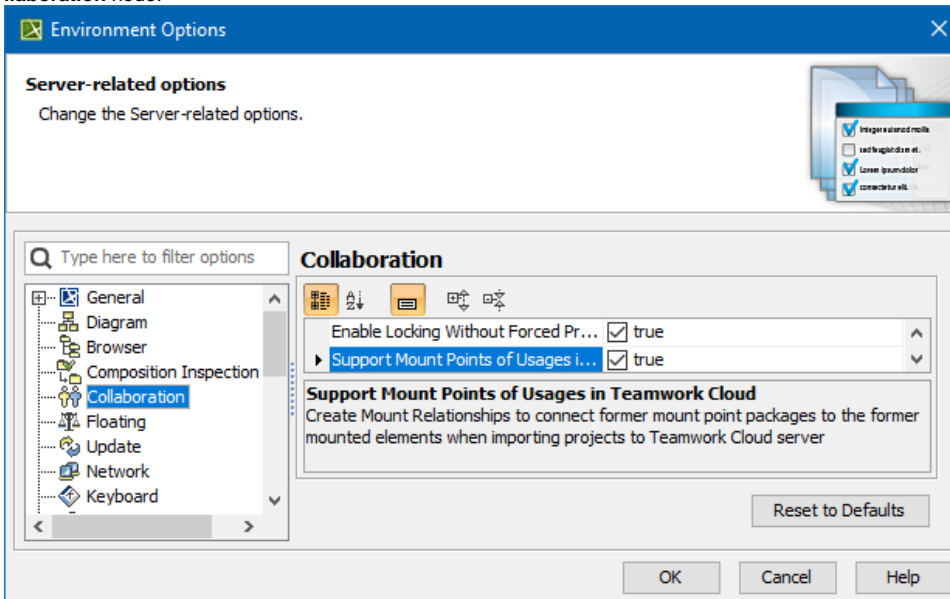
## Further Merge Usability Improvements

Along with improved Merge usability and bug fixes, the 19.0 SP3 release adds adjustments to common ancestor calculation algorithm rules. As a consequence, subsequent project merging iterations can be carried out more effectively without the need to repeat previously made merge decisions.

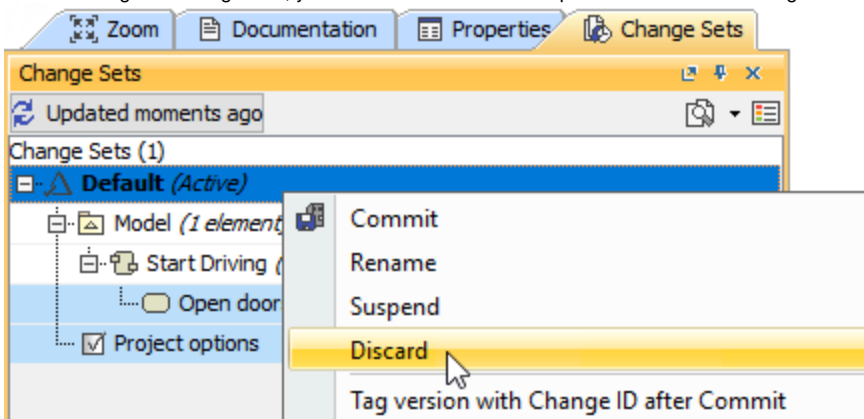
[Learn more about Model Merge >>](#)

## Other Enhancements

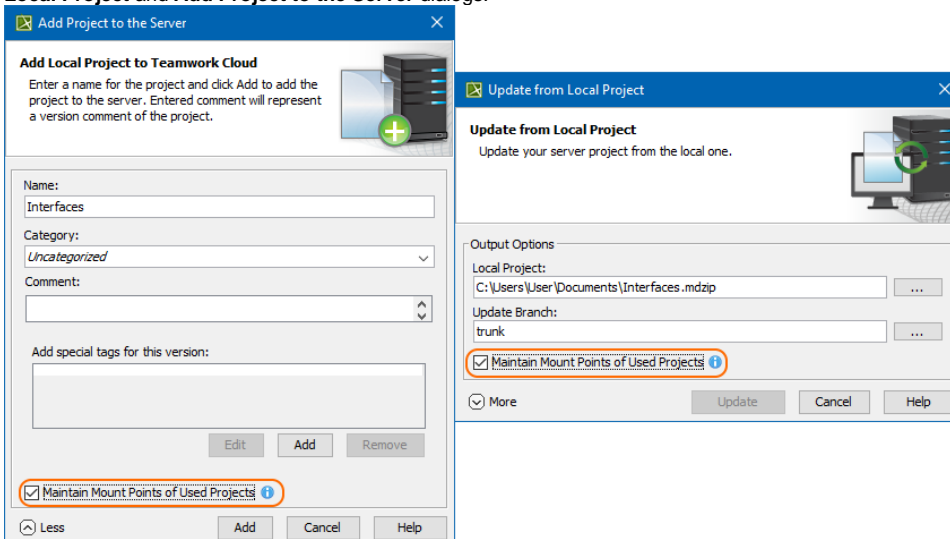
- For your convenience, we have moved an environment option **Support Mount Points of Usages in Teamwork Cloud** from **Save/Load** to the **Collaboration** node.



- When working with change sets, you can now discard both suspended and all local changes in an active change set.



- The **Maintain Mount Points of Used Projects** option can now be accessed even more conveniently. It has been added to the **Update from Local Project** and **Add Project to the Server** dialogs.



- Indirectly used projects can now be hidden or unhidden automatically together with directly used projects when their status changes, such as upon the used project update, remove, or merge.

## Other Features

## Report Wizard

- The Report Wizard allows selecting first and last hyperlinks in HTML text from cells in XLSX reports to apply them to the cells through a new Report Wizard Environment Option. [Learn more how to use template.xlsx.html.link report property >>](#)
- You can use curly brackets with the **#else** directive followed by text to include. [Learn more about this style of code >>](#)
- It is now possible to export images for TXT and HTML templates with or without returning relative paths or absolute paths. [Learn more how to handle paths of exported images >>](#)
- The **-leaveprojectopen** parameter helps reduce memory when loading or closing any large-size project for property files by leaving the project open per property file after generating reports. [Learn more how to deploy this command for multiple report generation >>](#)
- The new **template.docx.ignorechildstyle** report property for the DOCX template is now available for ignoring template styles to be included into generated reports and applying matching styles in the main template instead. [Learn more about this report property >>](#)

## Key Issues Fixed

The following key issues have been fixed with this version:

- An empty PDF was printed even though the diagram was fully filled
- The GanttChart diagram became empty after model obfuscation
- The SVG export did not export IDs for elements in a diagram preview
- The comments panel did not appear when the HTTP Protocol was used
- When it was impossible to create the symbol for DurationConstraint using API
- Project loading from TWC
- The Lost Message could not be created using Open API
- The MBPLE variant overwrite protection did not work on TWC
- Some expressions were not recalculated after reloading the project
- Documentation in the Properties tab could be updated only after the project reload
- There was a delay when the element was renamed in the diagram
- The error message (java.lang.IllegalStateException: No UUID map object after save) no longer appears after cloning the project



You can check [the list](#) of publicly available issues or your own reported issues fixed in MagicDraw 19.0 SP3.

**Note:** You will be required to login. Use the same username and password as for [www.nomagic.com](http://www.nomagic.com).

### Version news of servers and plugins

- [Teamwork Cloud 19.0 SP3](#)
- [SysML Plugin 19.0 SP3](#)
- [Cameo Simulation Toolkit 19.0 SP3](#)
- [UAF Plugin 19.0 SP3](#)
- [Cameo DataHub 19.0 SP3](#)

### MagicDraw Documentation

- [MagicDraw 19.0 LTR](#)

### News of earlier versions

- [MagicDraw 19.0 LTR](#)
- [MagicDraw 18.5 FR](#)
- [MagicDraw 18.4 FR](#)
- [MagicDraw 18.3 FR](#)
- [Product News Archive](#)