
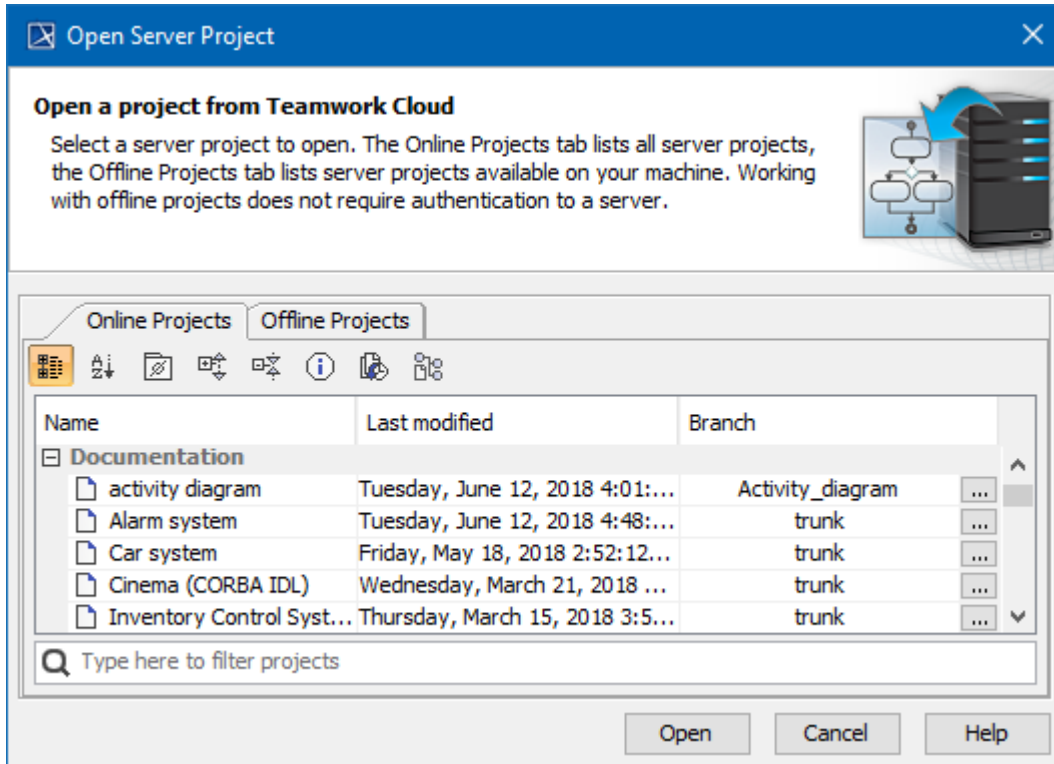


Opening projects from Teamwork Cloud

The **Open Server Project** dialog is used for opening and managing projects from the Teamwork Cloud (TWCloud).

To open the Open Server Project dialog

- From the **Collaborate** menu, select **Open Server Project** or **Projects....**
- On the **Collaboration** toolbar, click the  button.
- Press Ctrl+Shift+O.

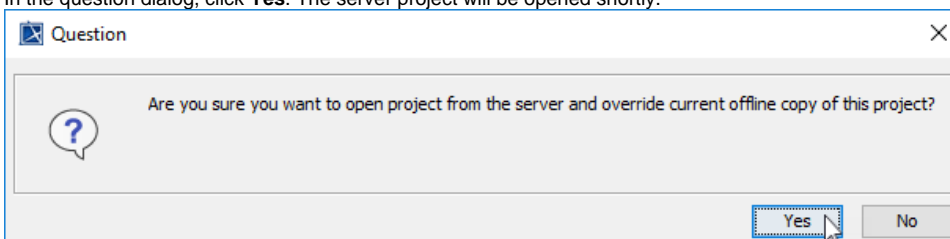


The Open Server Project dialog.

In the dialog, you may select whether to open an online project (that is a server project from the server) or an [offline project](#) (that is a server project from your machine). However, if an online project has an offline project version, the offline project will be opened even if you choose to open the project from the **Online Projects** tab. This mechanism ensures faster project load and ensures that your offline not yet committed changes are not lost. On the other hand, you can force open the online project (see [instructions](#) below), but, in this case, all changes made and not committed in the offline project will be lost.

To open the project from the server

1. From the **Collaborate** menu, select **Open Server Project** or **Projects.....**
2. In the new dialog, open the **Online Projects** tab.
3. Right-click the project you want to open.
4. From the shortcut menu, select **Open From Server**.
5. In the question dialog, click **Yes**. The server project will be opened shortly.







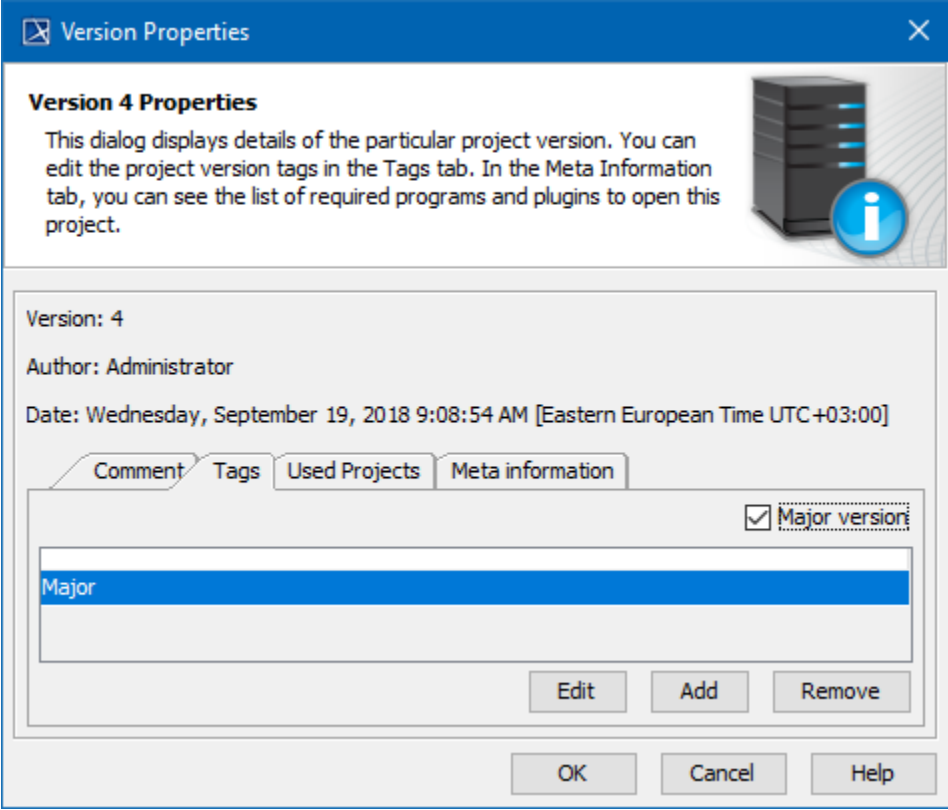

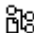
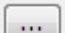
Password-protected projects

- You may be prompted to enter a password if the selected project is [password-protected](#).



- You can use the search bar to filter used projects by name.

- Currently, an open project is automatically selected in the **Open Server Project** dialog, making it easier to find it in the project list.

Button	Description
Show empty categories 	<p>When selected, shows empty categories. Cancel the selection if you do not want empty categories to be displayed.</p>
Version Properties 	<p>Opens the Version Properties dialog.</p> <p>In this dialog, you can see project information, such as comments, tags, modules, and meta information. You can find out the author, version number, and date including time zone.</p> <p>The button is available only when the project is selected.</p> <p>In the Tags tab, the Major version checkbox was added, to easily add tag <i>Major</i>.</p> 
Project History 	<p>Opens the History dialog.</p> <p>In this dialog, you can find the project change history. You can find out who made the changes, what and when has been changed. Also, you can open earlier versions of the project or even restore your project if any changes have corrupted your project.</p> <p>The button is available only when the project is selected.</p>
Select Branches 	<p>Opens the Select Branch dialog.</p> <p>In this dialog, you can see if the project has branches. If the project has branches, you can select them. Furthermore, you can create and manage project branches.</p> <p>Click  in a project line to select a particular project branch.</p>

Related pages

- [Offline modeling](#)