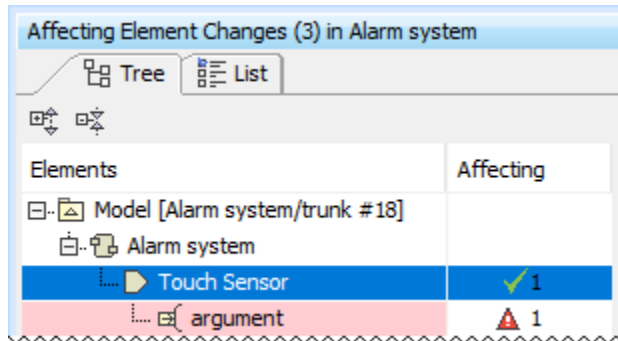


# Used project switch impact analysis window

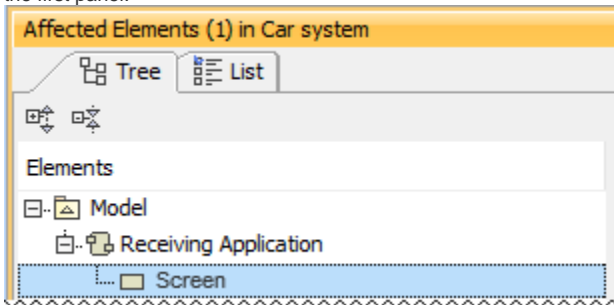
The **Impact analysis** window consists of three panels:

- **Affecting Element Changes** - the first panel, showing the changes in used project elements between the current used project version and the one that is to-be-switched to. Next to the panel title there are a number of elements that affect the main (using) project. This panel is separated into two columns:
  - The first column shows used project elements. It can be displayed as a tree or in list form.
  - The second column is named **Affecting**. This column shows how many elements are affected by the changed element and what kind of impact it might have (composition integrity errors or no errors).

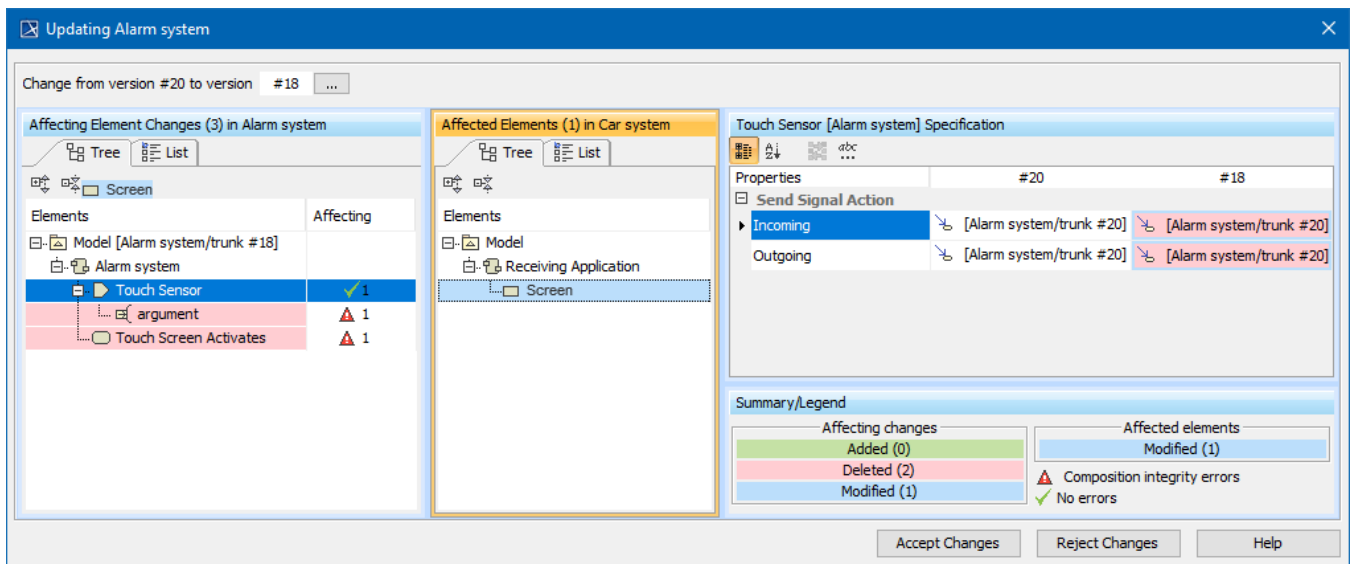


The **Affecting Element Changes** panel covers both direct and indirect usages, that is, if affecting change comes from an indirectly used project, it will be taken into account as well.

- **Affected Elements** - the second panel, which shows elements from the main project that are directly affected by element change(s) from the **Affecting Element Changes** panel. Next to the panel title are a number of elements that are affected in the main project by the selected element in the first panel.



- **Element specification** - the third panel, showing the properties of selected element either from the **Affecting Element Changes** (changed element properties are shown) or **Affected Elements** (directly affected element properties are shown) panel. This panel works similarly to [quick diff](#) and is separated into three columns:
  - The first column shows the properties name.
  - The second column shows the properties value from the current used project version when an element is selected in **Affecting Element Changes**. When an element is selected from **Affected Elements**, this column will show the current property value before the used project version switch.
  - The third column shows properties value changes in the new used project version when an element is selected in **Affecting Element Changes**. When an element is selected from **Affected Elements**, this column will show the to-be property value after the used project version switch.



Impact analysis window for the *Alarm system* used project.

Derived properties are not considered in the impact analysis.

There are certain cases when element selection either in **Affecting Element Changes** or **Affected Elements** panels are not followed by a quick diff in the **Element Specification** panel:

- Whenever an element is deleted in the **Affecting elements** panel, its properties will no longer exist. Following this logic, the **Element Specification** panel will only show a notification indicating that the element is deleted and there are no properties to show.
- Whenever an affecting/affected element is selected in either of the first two panels against which a quick diff does not work, such as a diagram. In this case, you will be notified that there are no property changes for this type of element.

## Toolbar

All three panels have toolbars to ease navigation through changes.

Icon	Name	Functionality
	Expand All	Click to expand all the elements in the tree.
	Collapse All	Click to collapse all the elements in the tree.
<b>Specific for Element specification panel toolbar</b>		
	Categoriz ed view	Click to show all property names in a category.
	Alphabeti cal view	Click to show all property names in alphabetical order.
	Compare values	Click to compare property values.
	Strip Multiline Text	Click to strip multiline text. If the text in the property cell (e.g., ToDo) covers more than five rows, it is finished with ... showing only those five rows. The complete text is available in the tooltip or in the cell edit mode.



**Affecting Element Changes** and **Affected Elements** panels have a List view tab. Use this to list all changed elements. You can search for a specific element in these List views.

## Summary/Legend

The Summary/Legend section introduces change types, the number of different affecting changes and the number of affected elements. It also includes marking composition integrity errors and a green tick to notify you that changes will not invoke any new composition integrity errors.

### Summary/Legend

#### Affecting changes


Added (0)


Deleted (5)

Modified (0)

#### Affected elements

Modified (3)

 Composition integrity errors

 No errors