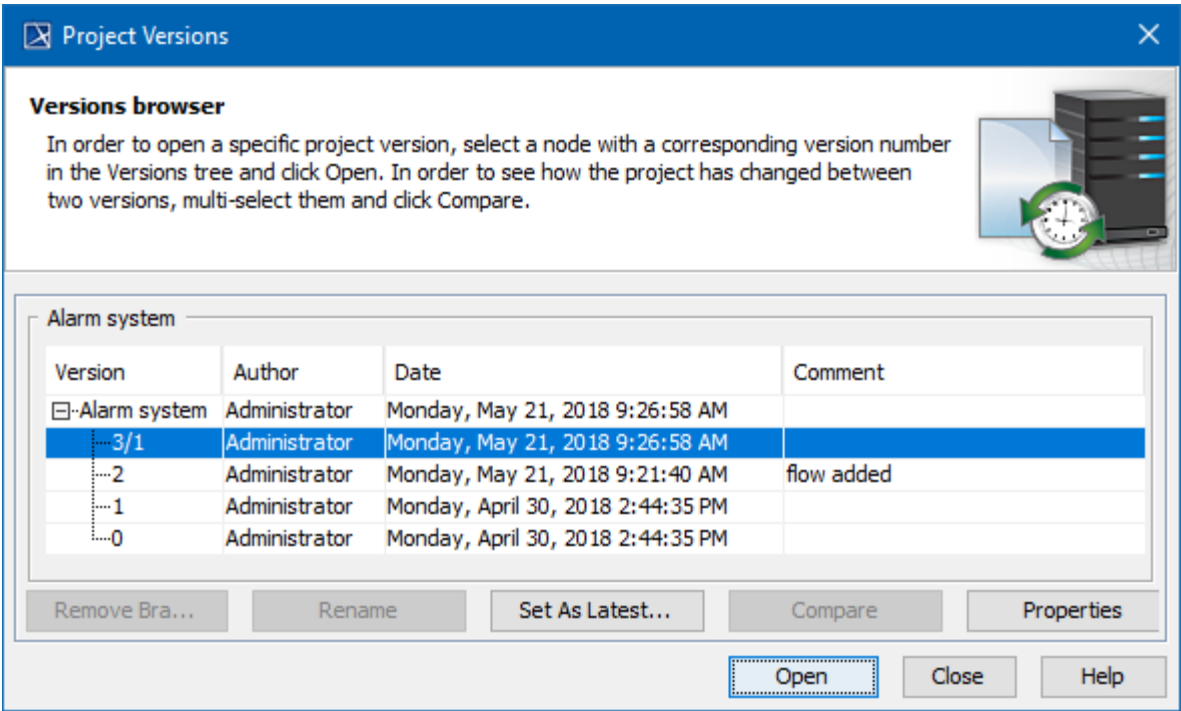


# Project Versions dialog

In the Project Versions dialog, project versions are listed from oldest (on the top) to newest.

To open the Project Versions dialog

- 1. From the **Collaborate** menu, select **Open Server Project**.
- 2. In the **Open Server Project** dialog, select a project and click the **Project History** button.



Project Versions dialog

Element Name	Description
Version	The version number of a project. In the example above, the last project version number is denoted as "3/1". This is the result of setting a previous project version as the newest one. In this particular example, "3" denotes the current project version number and "1" denotes the number of the version, which has been set as the newest one.
Author	The login name of the user who created the project version.
Date	The date and time the project version was created.
Comment	The description of changes in the version. You can make a version comment when committing a version.
Create Branch	Opens the Create Branch dialog for creating a new branch for the selected version or branch. The button is available only if a version or branch is selected.
Remove Branch	Opens the dialog to confirm or cancel the removal of the selected branch. The button is available only when a branch is selected. You will not be allowed to undo this action.
Rename	Indicates the branch name to rename. The button is available only when a branch is selected.
Set As Latest	Set the selected project version as the current version. The created version number consists of two parts: the current version number and the version number set as the current version. If a user does not have the rights to edit the project, this button is disabled.
Compare	Compares two selected branches. If there are differences between project branches, the result is presented in the Difference Viewer dialog . The button is available only when two project branches are selected (use the SHIFT or CTRL keys).
Properties	Display information about versions of a project.
Open	Open the selected version of the project. You can make changes only to the latest version of the project. Earlier versions are read-only.

<b>Close</b>	Exit the dialog.
<b>Help</b>	Documentation for the project version will be opened.

- [User management](#)
- [Manage Projects Dialog](#)
- [Open Server Project Dialog](#)
- [Commit Project to the Server dialog](#)
- [Project Versions dialog](#)
- [Use Server Project wizard](#)