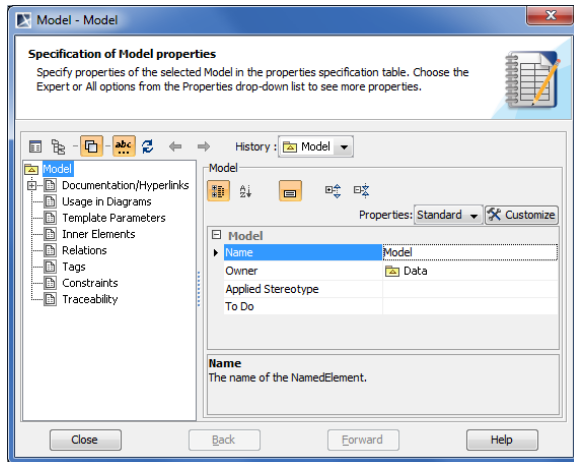


# Model

A model contains a (hierarchical) set of elements that describes the physical system being modeled. It can also contain a set of elements that represent the environment of the system (typically [Actors](#) together with their interrelationships), such as [Associations](#) and [Dependencies](#).

A model is presented as a [package](#) with a small triangle in the upper right corner of the large rectangle. The triangle can be shown in the tab.

The model is defined as a package; that is, it has package properties in the Model [Specification window](#), as shown below.



## Related Pages

- [Object diagram](#)
- [Class diagram](#)
- [Dependency](#)
- [Actors](#)
- [Package](#)
- [Associations](#)
- [Model Elements](#)