



# Smart Package

 This feature is available in Standard, Professional, Architect, and Enterprise editions.


Smart package is a special collection of model elements.

There are two ways an element can be included in the smart package:

- *Manually* - the user selects to include the particular element.

 You can create a smart package named *My Bookmarks* and add frequently used elements to it.

- *Automatically* - the element meets the set of criteria defined by the user.

 You can create a smart package named *Requirements v5* with the criteria "all elements of type *Requirement* under the package *Business requirements*, having tag *version=5*".

The membership in the smart package is not the UML ownership; one element can belong to several smart packages.

Smart packages aggregate relevant elements, so that you can:

- Easily browse, navigate, list, and discover these elements in the Containment tree.
- Narrow the scope in both the **Find** dialog and the element Selection dialog.
- Define dynamic row and column scopes in dependency matrices.

## Concepts

To better understand this material, please read through the following concepts.

### Static contents

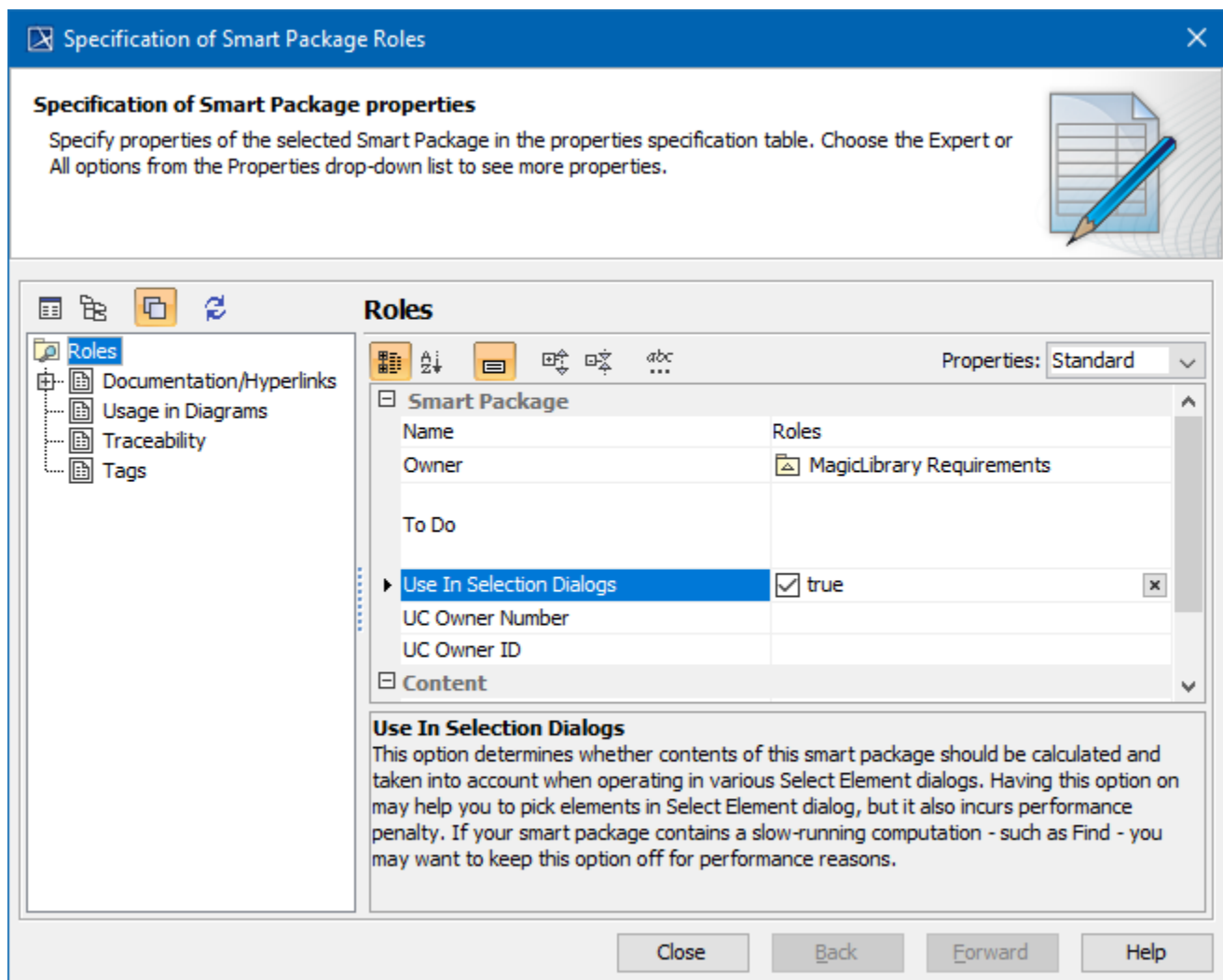
A collection of manually included elements.

### Dynamic contents

A collection of elements automatically calculated according to the set of criteria specified by the user.

### Performance contents

In the **Smart Package Specification window**, you can take advantage of a new property, **Use In Selection Dialogs**, which allows you to work better with your smart packages. Previously, smart packages slowed down the opening of **Selection** dialog boxes. **Use In Selection Dialogs** allows users to exclude the smart package from the calculation of elements to display in **Selection** dialog boxes (e.g. [Select Elements](#)).



#### Related pages

- [Creating smart packages](#)
- [Managing contents of smart package](#)
- [Smart package properties](#)
- [Using smart packages in your model](#)
- [Smart package-related performance issues](#)
- [Model Elements](#)
- [Stereotype](#)
- [Package](#)
- [Working with Profiles](#)