

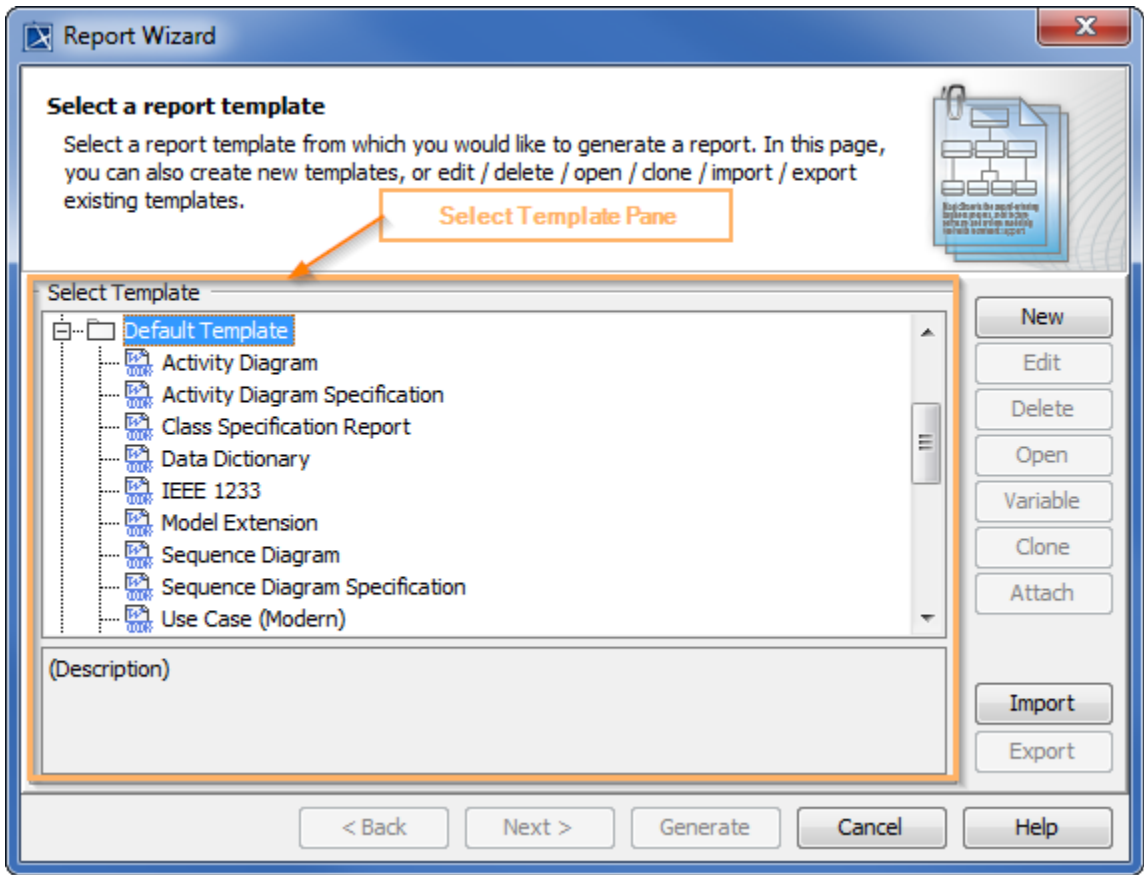
# Template Management Pane

On this page

- [Using the Template Management Pane](#)
- [Working with a Template](#)
- [Working with a template variable](#)
- [Glossary](#)
- [More information about working with templates in Report Wizard](#)

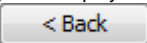
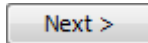
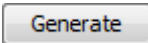
Report Wizard uses templates to generate reports. Each report file format depends on the type of template files. The type of template files that Report Wizard supports includes *plain text*, *RTF*, *HTML*, *Office Open XML (ISO/IEC 29500:2008)*, *OpenDocument format (ISO/IEC 26300)*, and *XML template (DocBook or FO)*.


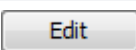
Report Wizard provides predefined templates such as Use Case, Model Extension, Data Dictionary, IEEE 1233, Class Specification Diagram, Business Process Diagram, and Web Publisher templates. The report template management pane in the **Report Wizard** dialog lists all of the report templates from which you can select to manage or generate your report.



Template options, which are highlighted in orange, are available to choose from in the Report Wizard dialog.

## Using the Template Management Pane

In this pane, you can create a new template, or use an existing one. The following table displays the buttons from which you can choose while working with your template. Additionally, the control buttons in the lower part of the dialog , , and  help you cancel an action, go to the next step, and generate a report.

Button	Function
	Opens the <b>New Template</b> dialog through which you can create a new template.
	Edits a template and saves it in Report Wizard.

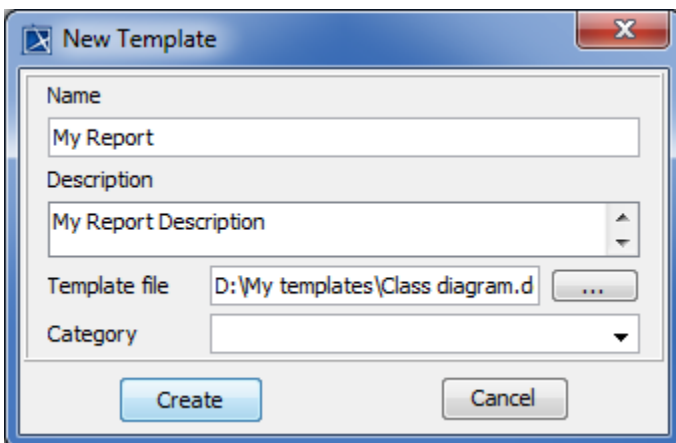
Delete	Deletes a template from Report Wizard.
Open	Opens a template file in the default editor.
Variable	Creates a new template variable and modify or delete an existing template variable in the <b>Template Variable</b> dialog.
Clone	Clones a selected template.
Attach	Copies a selected template and adds it to the project file.
Extract	Extracts an attached template to a local report templates folder.
Import	Imports a template.
Export	Exports a template.

## Working with a Template

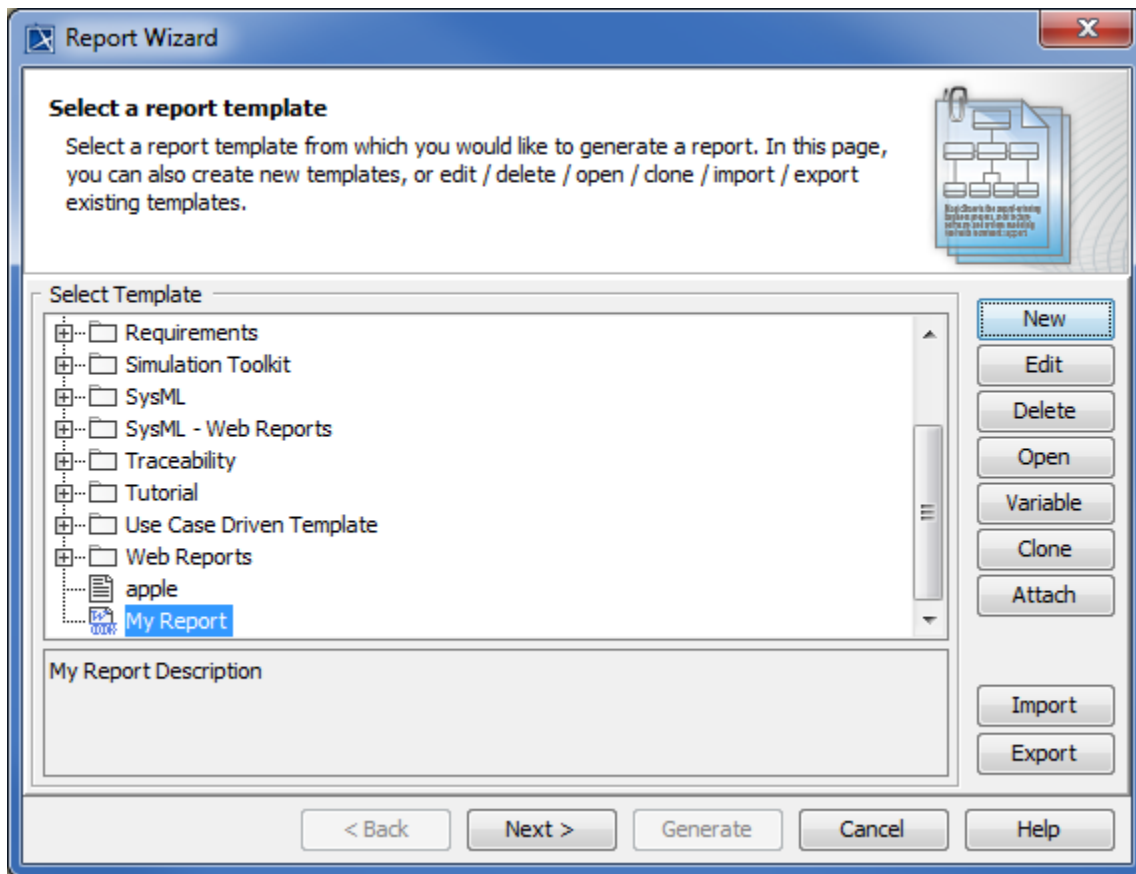
The following instructions illustrate how to use each button in the Report Wizard to create, select, and manage a template.

To create a template

1. On the MagicDraw main menu, click **Tools > Report Wizard**. The **Report Wizard** dialog will open.
2. Click **New**. The **New Template** dialog will open.



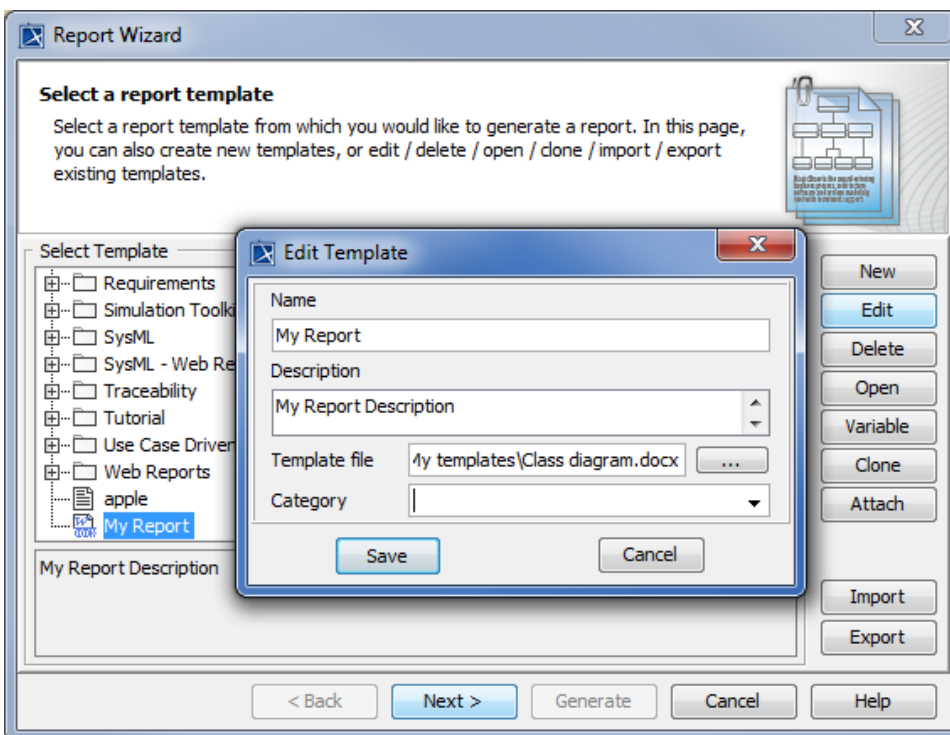
3. Creating a new template in the New Template dialog. Enter the template name and description.
4. Click **...** to select the location of the new template.
5. Select the template file location and click **Select**.
6. Click **Create**. The template file will be created in the **Select Template** pane.




The template file is created in the Select Template pane.

To edit a template


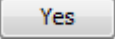
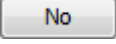
1. In the **Report Wizard** dialog, select a template and click . The **Edit Template** dialog will appear.

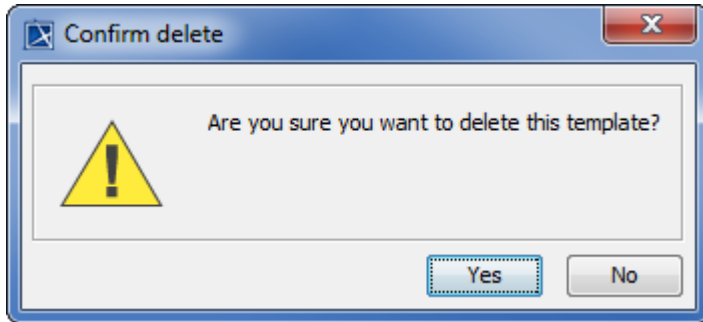


Editing a template in the Edit Template dialog.

2. Edit the template name, description, category, and locate the template file's location.
3. Click .

To delete a template

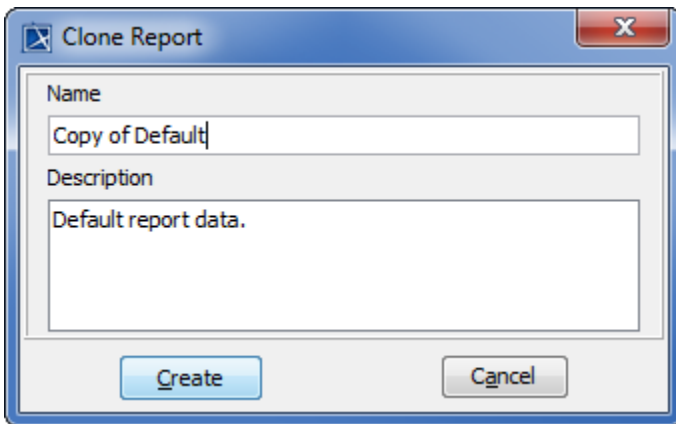
1. In the **Report Wizard** dialog, select a template and click . The **Confirm delete** dialog will appear.
2. Click  to delete the selected template from the template list, or click  to cancel the operation.



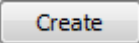
The Confirm delete dialog.

To clone a template


1. In the **Report Wizard** dialog, select a template and click . The **Clone Template** dialog will appear.

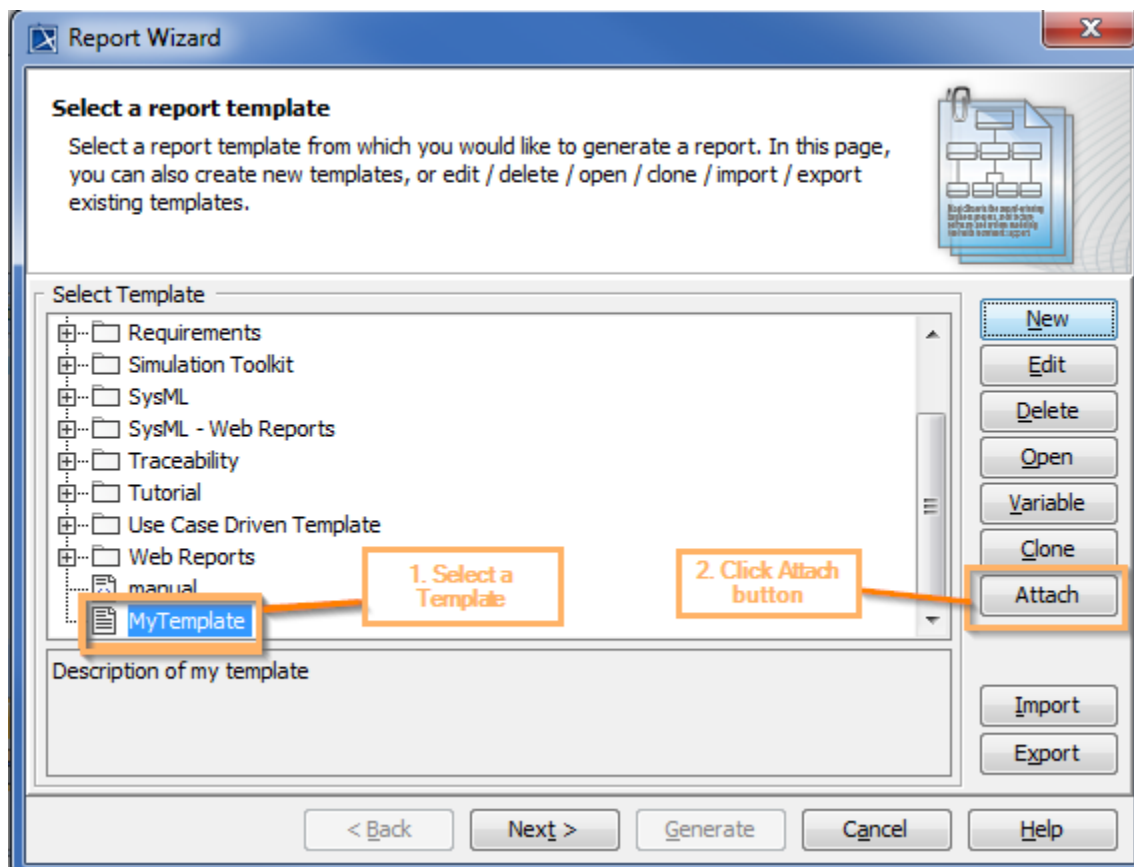


Cloning a template in the Clone Template dialog.

2. Enter the name and description. The name of the cloned template should begin with **Copy of** (name of template).
3. Click  to clone the template.

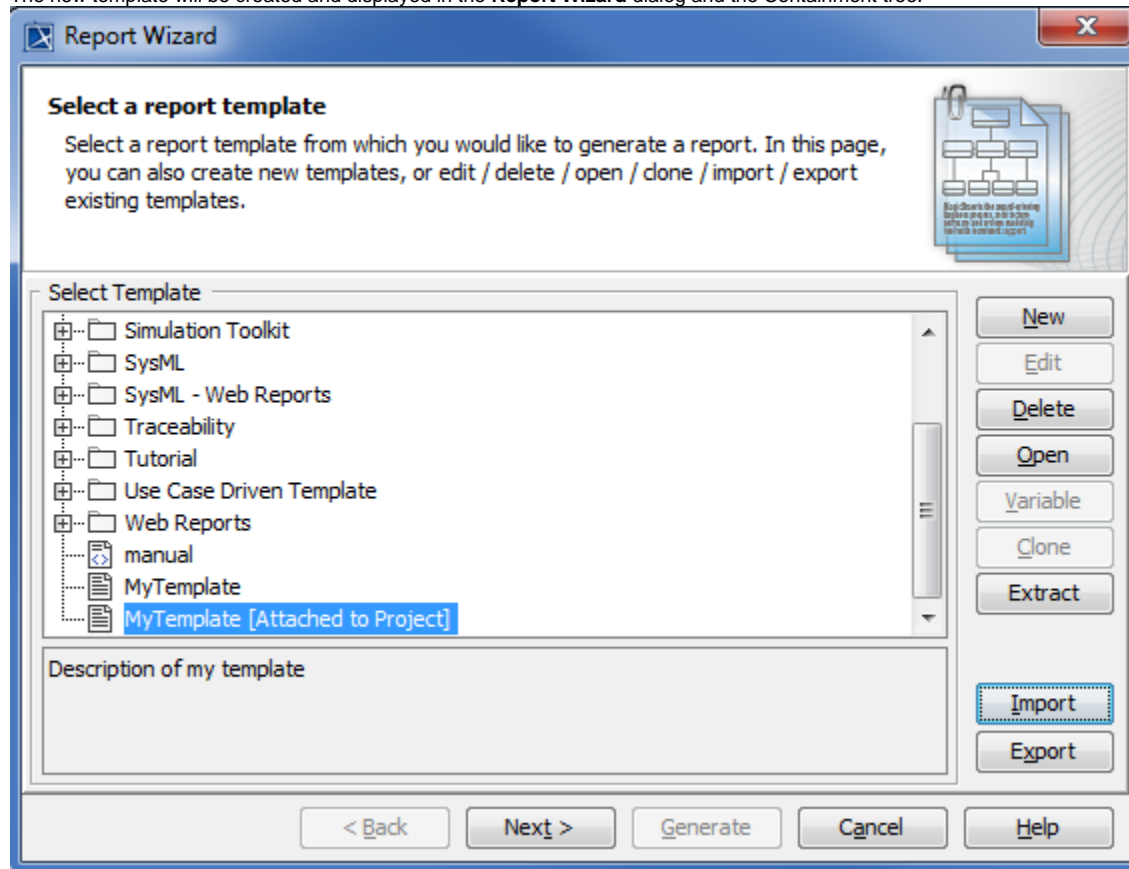
To copy a template and add it to the project file

1. Select a template in the **Report Wizard** dialog.
2. Click  to make a copy of the selected template and add it to the project's files, so anyone with access to the project can generate a report.

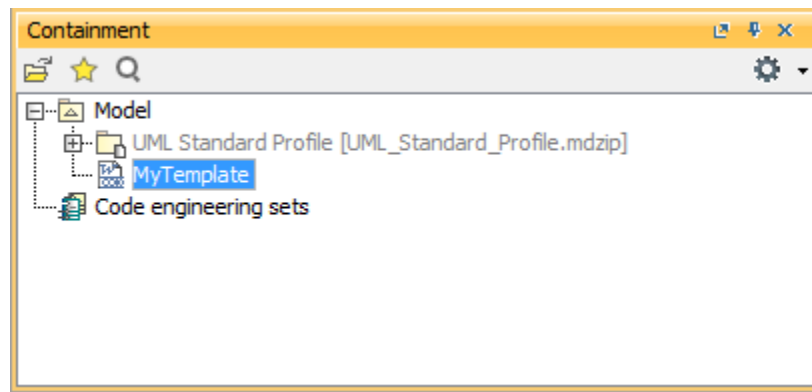


The steps to attach a template to a project file.

The new template will be created and displayed in the **Report Wizard** dialog and the Containment tree.

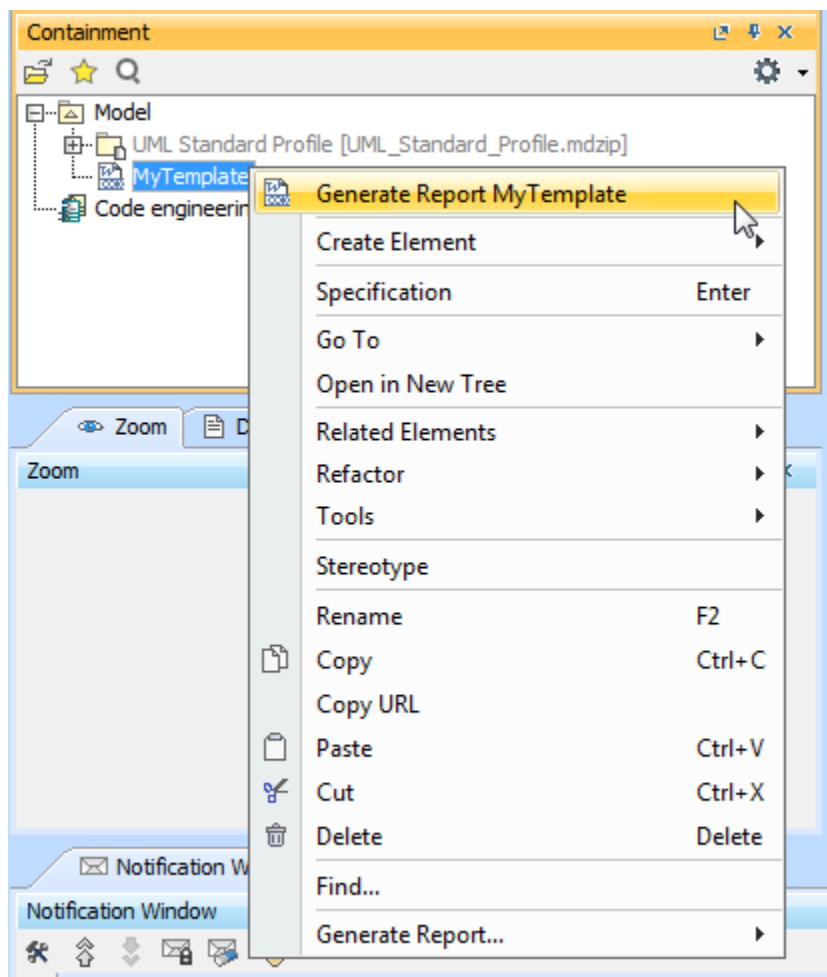


Result of attaching a template in the Report Wizard dialog.

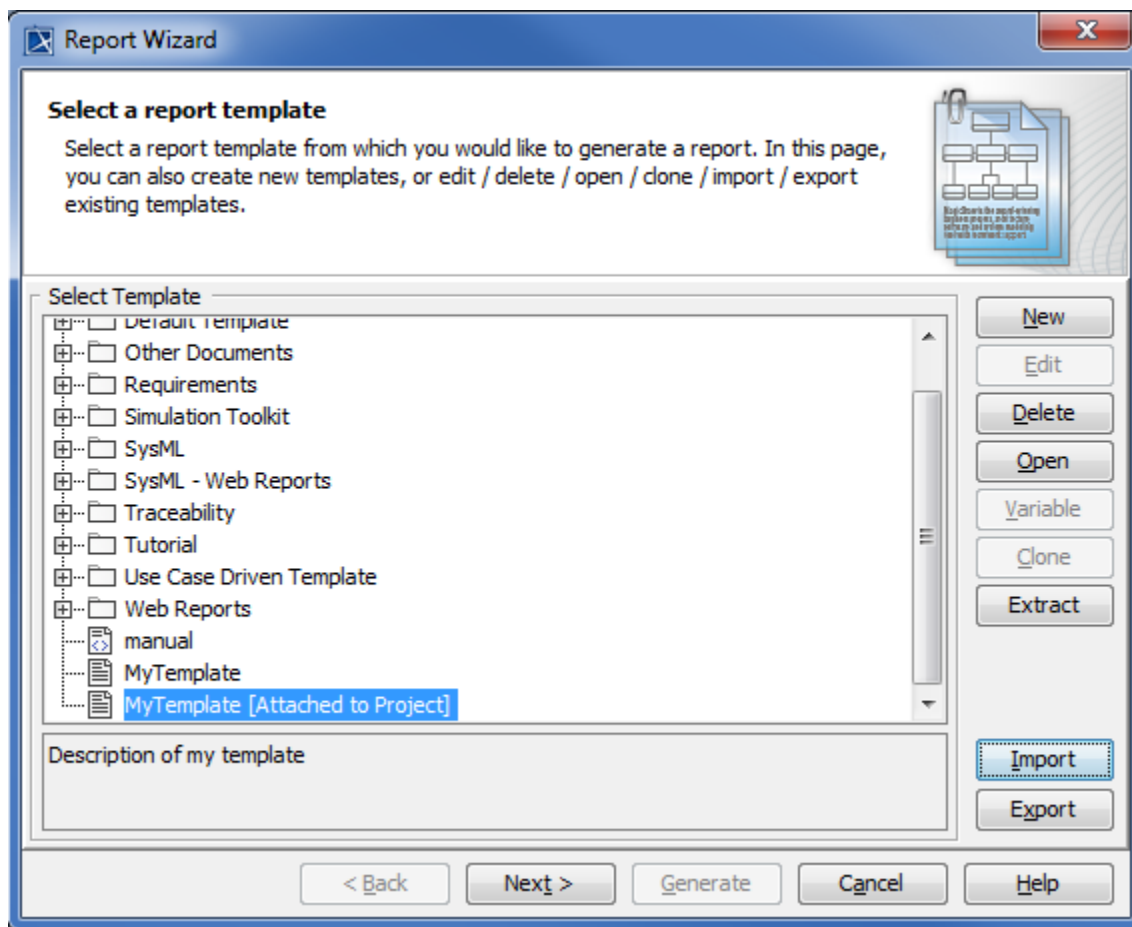


Result of attaching a template in the Containment tree.

You can right-click the attached template in the Containment tree, and select **Generate Report{attached template name}** to open the **Report Wizard** dialog.



Opening the Report Wizard dialog via attached template in the Containment tree.



The Report Wizard template selection dialog.

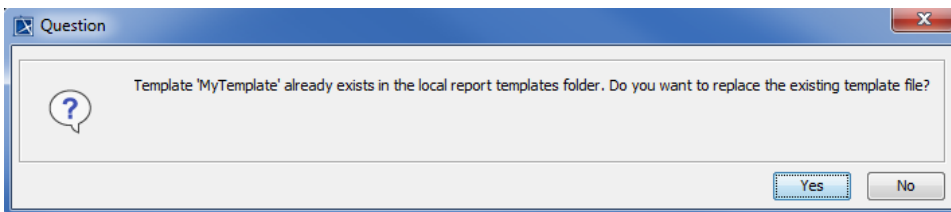
**Note**

- In the **Report Wizard** dialog, when you select the attached template, the **Attach** button will be changed to **Extract** button.

To extract a template

- You can use the **Extract** button to extract the attached template to the local report template folder. After you finish editing, you can use

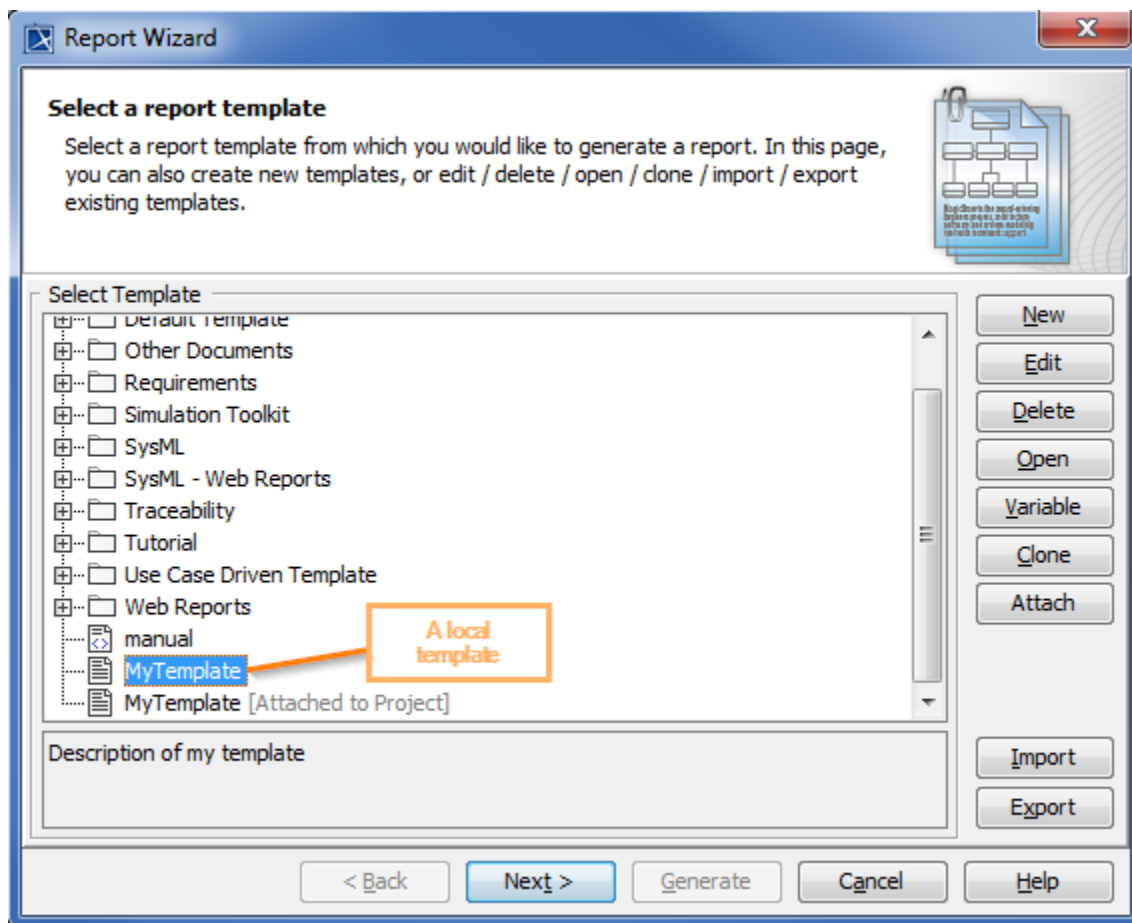
- Select **Attach** button in the **Report Wizard** dialog.
- Click **Extract** to extract the attached template to the local report template folder.
- If the template already exists in the local report template folder, a confirmation dialog will be displayed.



The confirmation dialog when you extract a template.

- Click **Yes** to extract the template. The attached template will be extracted to a local template.





A local template in the Report wizard's template selection pane.

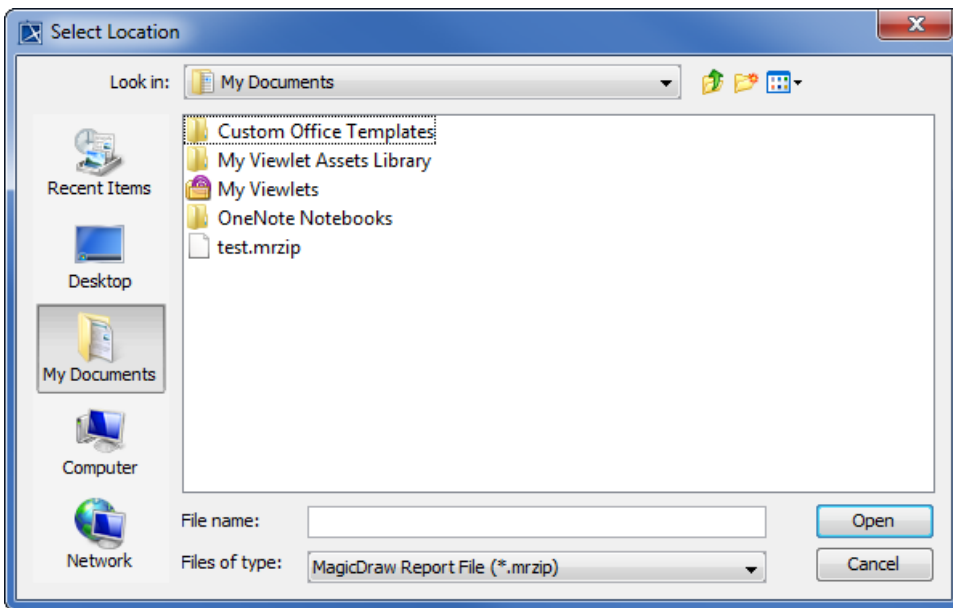


- After you finish editing, you can use the **Attach** button to re-attach the updated report template to your project.

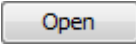
To import a template

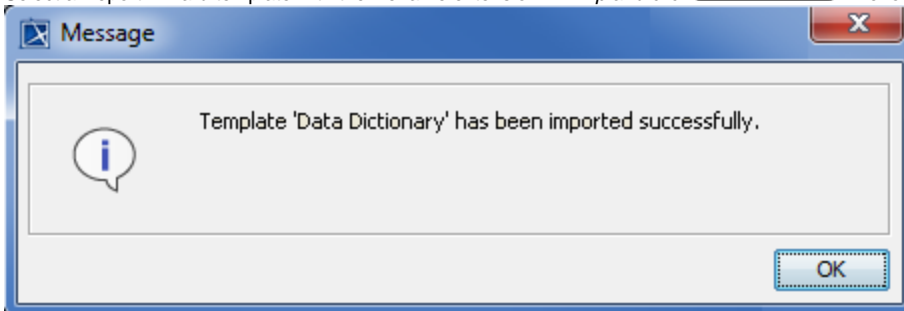
- You can remove an attached template from a project by selecting it and clicking **Delete**.

1. In the **Report Wizard** dialog, click **Import**. The **Select Location** dialog will appear.



Selecting the location to import a template.

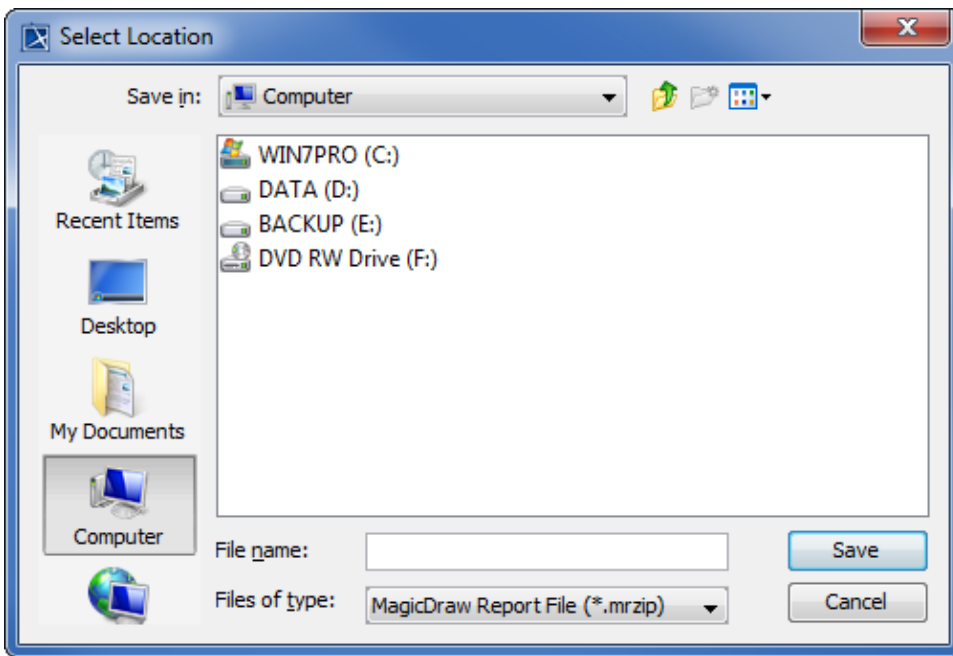
2. Select a Report Wizard template with the filename extension *\*.mrzip* and click . The following **Message** dialog will open.




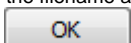
The Message dialog of a successful import.

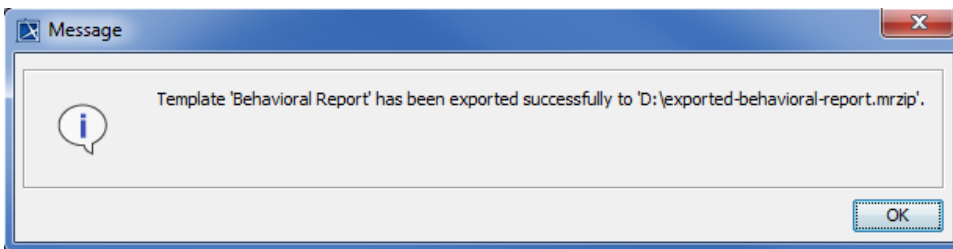
To export a template

1. In the **Report Wizard** dialog, select a template and click . The **Select Location** dialog will open.



Selecting a location to export the template.

2. Select a directory or folder location in which you want to export the template.
3. Type the filename and click . The **Message** dialog will open.
4. Click .



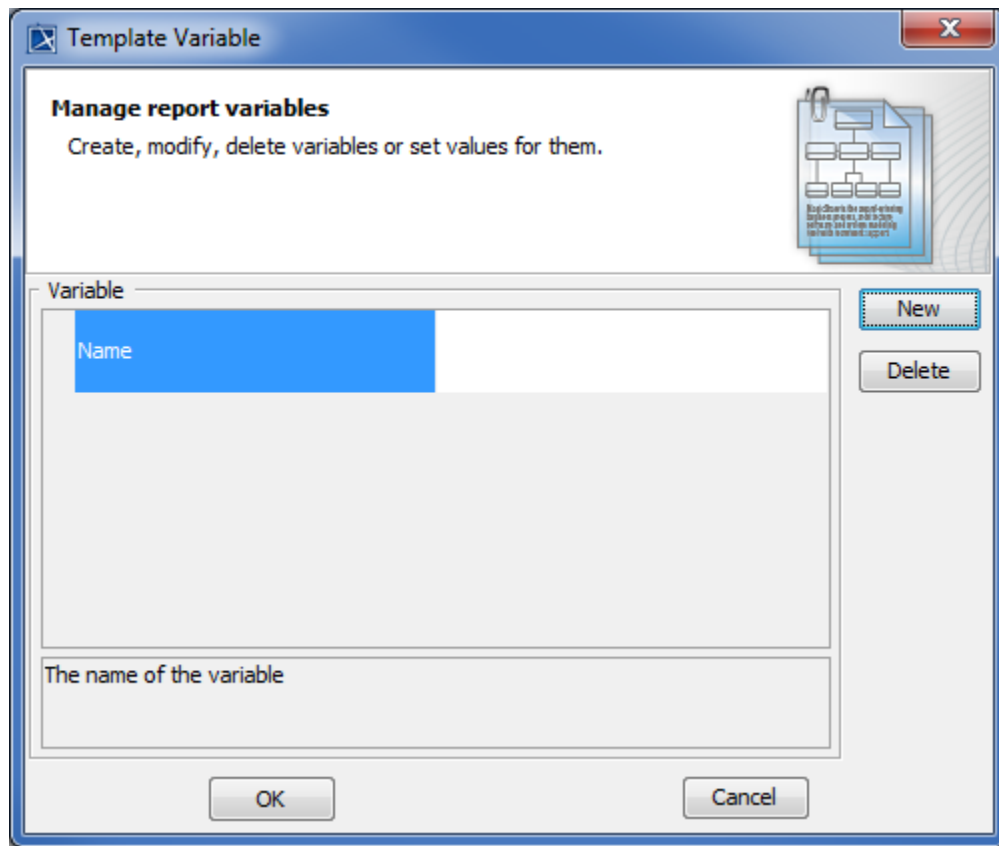
The Message dialog of successful export.

To open a template file in the default editor

- In the **Report Wizard** dialog, select a template and click . The template file will open in the default editor.

## Working with a template variable

A template contains variables and their values. You can create a new template variable, and modify or delete an existing template variable in the **Template Variable** dialog. You cannot modify the variables of a built-in template. You can only create or modify a template variable of a user-created template.



The Template Variable dialog.

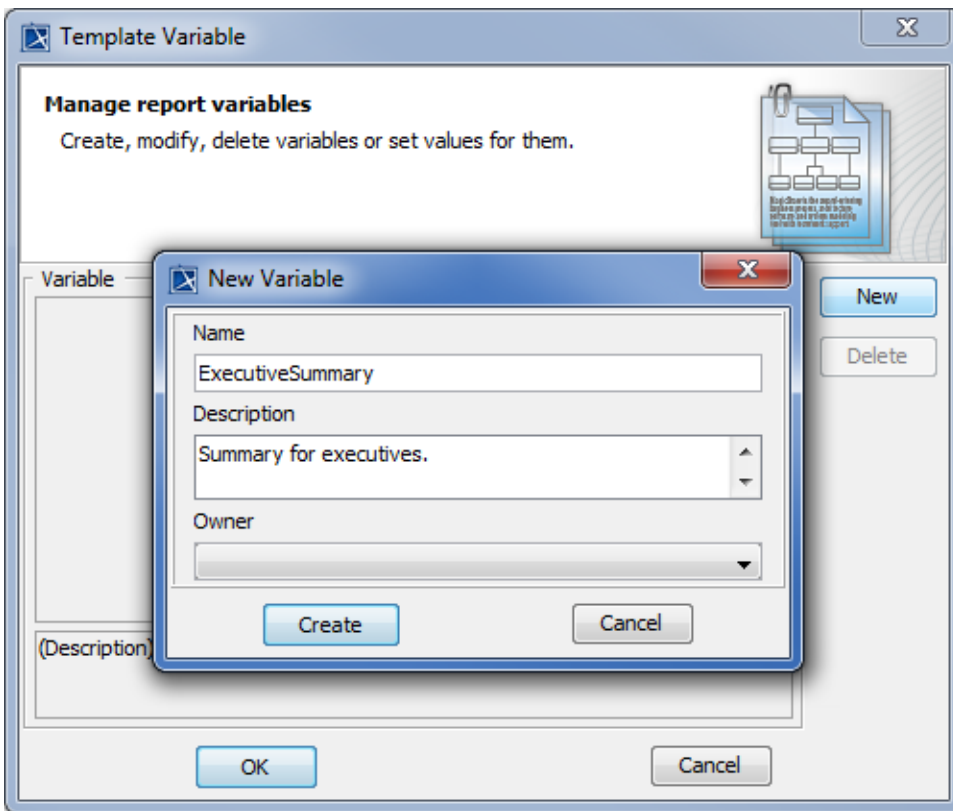
The **Template Variable** dialog, contains the following:

- **Variable** pane: This pane consists of a table in which the first column is the variable name, the second column is the variable value, and also includes a report description field. You can view and directly edit the value of a selected variable in the second column.
- Control buttons:  and .


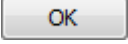
The following instructions explain how to manage the variables of a template.

To create a template variable

1. Select a template in the **Report Wizard** dialog and click . The **Template Variable** dialog will open.
2. Click . The **New Variable** dialog will appear.

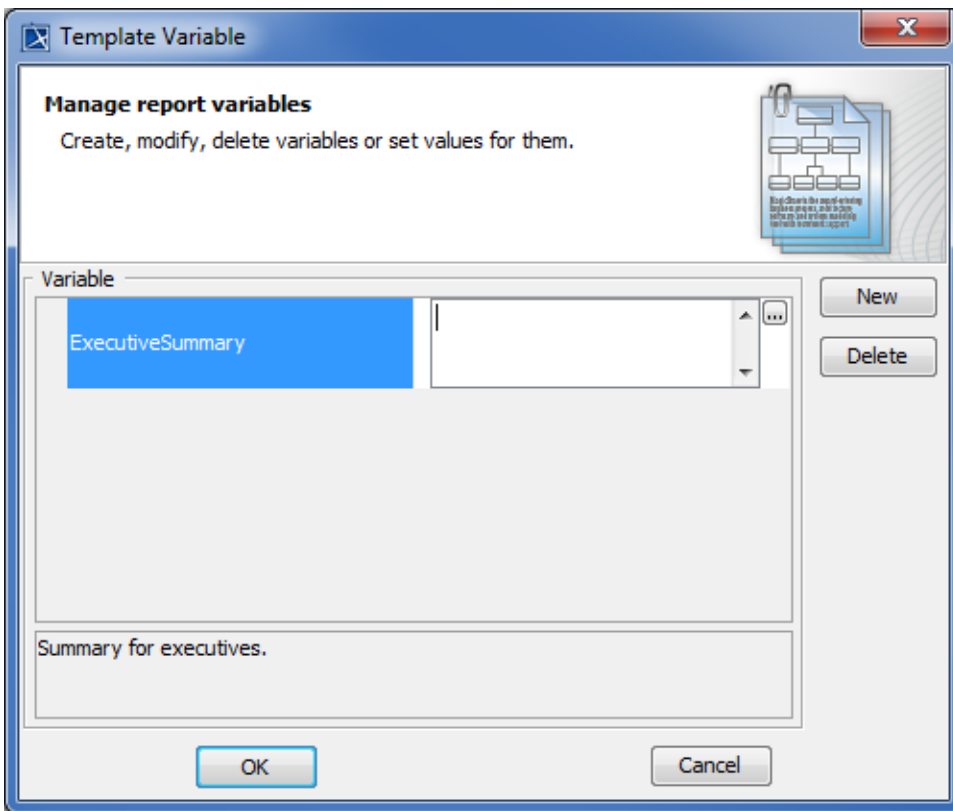


Creating a new variable in the New Variable dialog.

3. Enter the variable name (no space between characters) and description.
4. Select an owner for this new variable from the **Owner** drop-down list (optional).
5. Click . You will see the newly-created variable's name and value in the **Variable** pane.
6. In the **Template Variables** dialog, click .

To modify a variable value in the Template Variable dialog

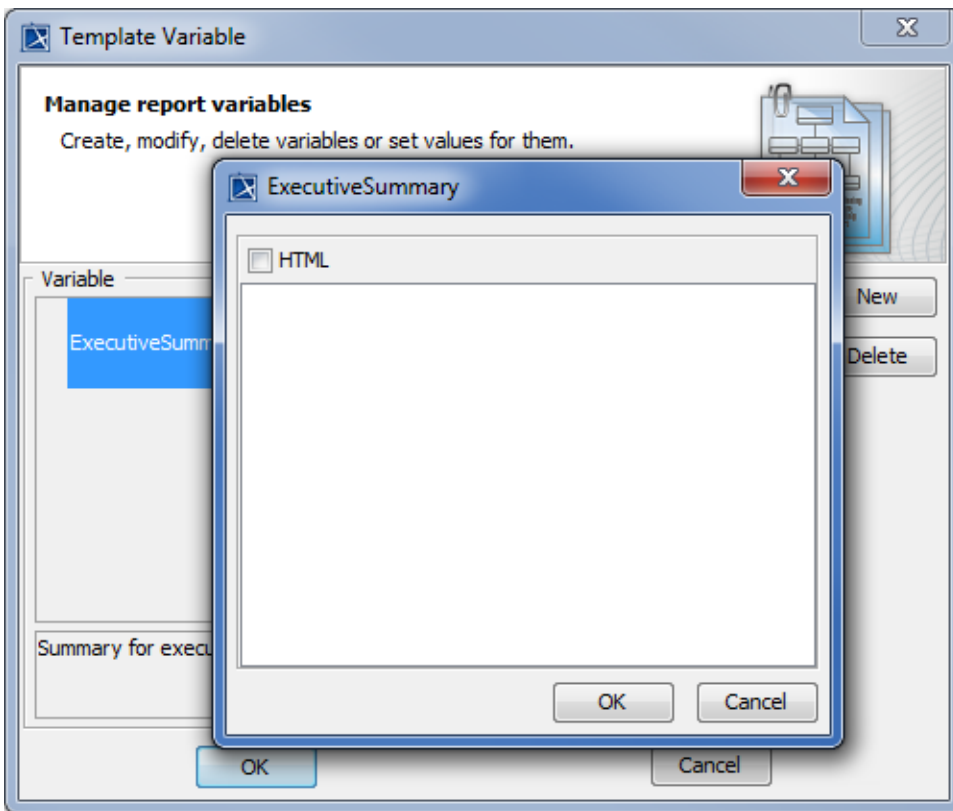
1. Select a template in the **Report Wizard** dialog, and click **Variable** to open the **Template Variable** dialog.
2. Double-click the **Variable** value column and modify the value in the column.



Editing a variable value in the Template Variable dialog.

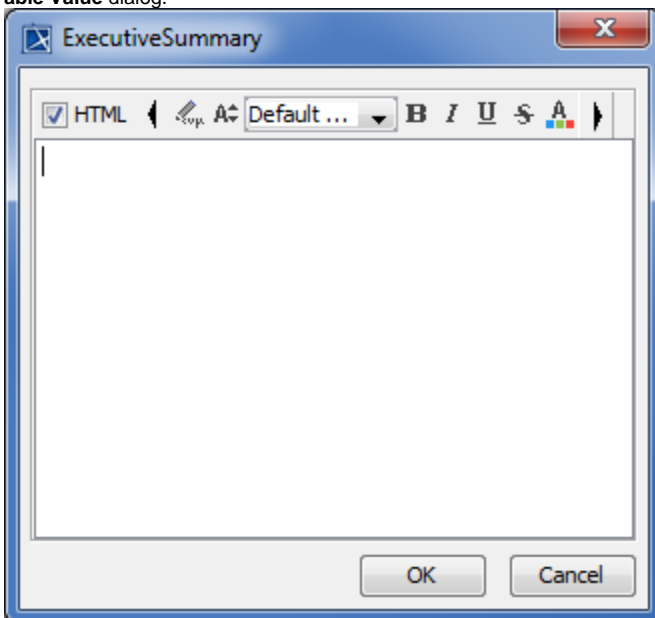
To modify a value in the Template Variable value dialog

1. Double-click the **Variable** value column in the **Variable** pane in the **Template Variable** dialog, and click the  button. The **Variable** value dialog will open.



Editing a variable value in the Variable value dialog.


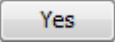
2. To modify the variable value, you can enter the value of a report variable either in plain text or HTML by selecting the HTML check box in the **Variable Value** dialog.

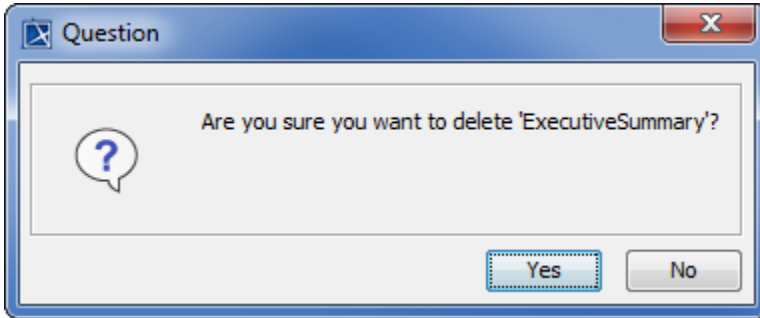


Entering a report variable value in HTML.

3. Click .
4. When you finish modifying variables and their values in the **Template Variable** dialog, click either  to confirm the changes or  to discard them.

To delete a variable

1. Select a variable in the **Template Variable** dialog and click . The **Question** dialog will appear prompting you to confirm before deleting the selected variable.
2. Click  to delete the selected variable.



Deleting a variable.

## Glossary

- **Use case**  
A a kind of behavior classifier that specifies a complete unit of useful functionality performed by one or more subjects to which the use case applies in collaboration with one or more actors. It also, for complete use cases, yields an observable result that is of some value to those actors or each subject. Use cases allow you to capture the requirements of systems under design or consideration, describe functionality provided by those systems, and determine the requirements those systems pose on their environment.
- **Business process diagram**  
A road map for implementation. It outlines the expected outcome, and provides something concrete from which to build.

## More information about working with templates in Report Wizard

To learn more about templates and template variables, you can visit the following pages:

- [Report Wizard Template Language](#)
- [Report Wizard Environment Options](#)
- [Template Variables](#)
- [Report Wizard Template Editor](#)