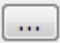
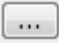
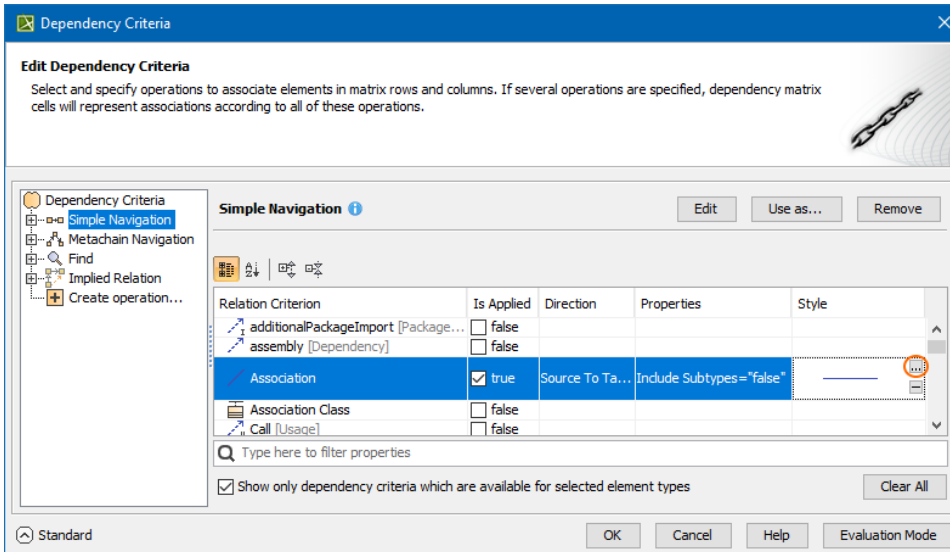


Specifying relationship line styles

You can specify the colors, line styles, or, alternatively, set an icon for the representation of your relationships in **Dependency Matrices**. To be able to do this, you need to access the **Style** dialog in the first place.

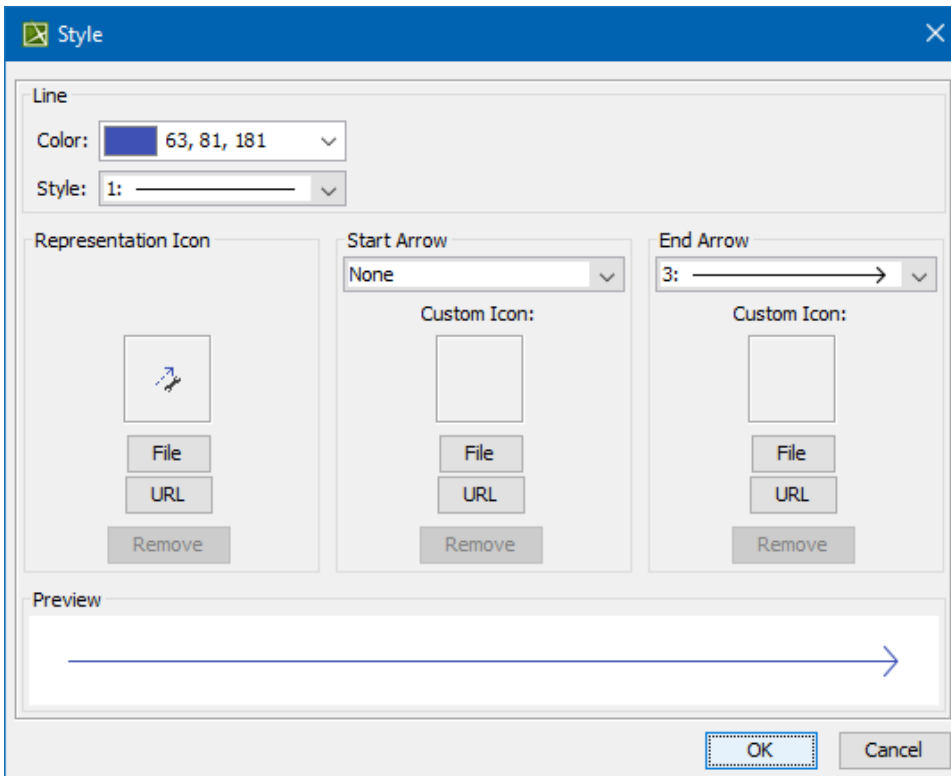
To open the **Style** dialog

1. Open the **Dependency Criteria** dialog by
 - double-clicking the **Legend**.
 - clicking the  button next to **Dependency Criteria** in the **Criteria area**.
2. Open the **Style** dialog by clicking the  button in the **Style** column of your selected relation criterion.




3. In the **Style** dialog, customize **Color**, **Style**, **Start Arrow**, **End Arrow** or set **Representation Icon** (see the [table](#) below for more information).

4. When you are done, click **OK** to close the dialog.



Style Options

Color	Specify the line color.
Style	Specify the line style.
Start Arrow	Specify the arrowhead style.
End Arrow	Specify the arrow end style.
Representation Icon	<div>Represent relationships using an icon.</div> <ul style="list-style-type: none">• File - upload the icon image from your file system.• URL - add a path to the icon available on a shared location.• Remove - remove the uploaded icon image or the specified URL.

Your selection is shown in the customized legend in the top-left corner or above the matrix. The legend is displayed by default in all new projects, but if you don't want to see it all the time, simply click the  button in the [Dependency Matrix toolbar](#) and then click **Legend Location > Do Not Display**.

