
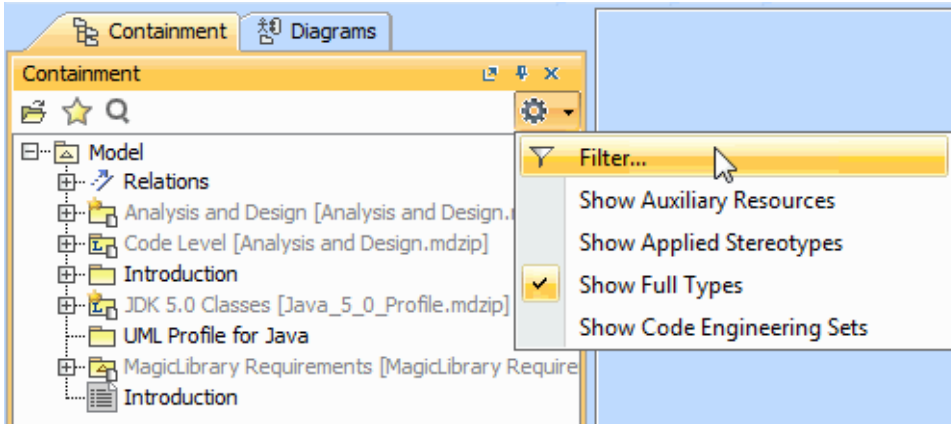


# Filtering

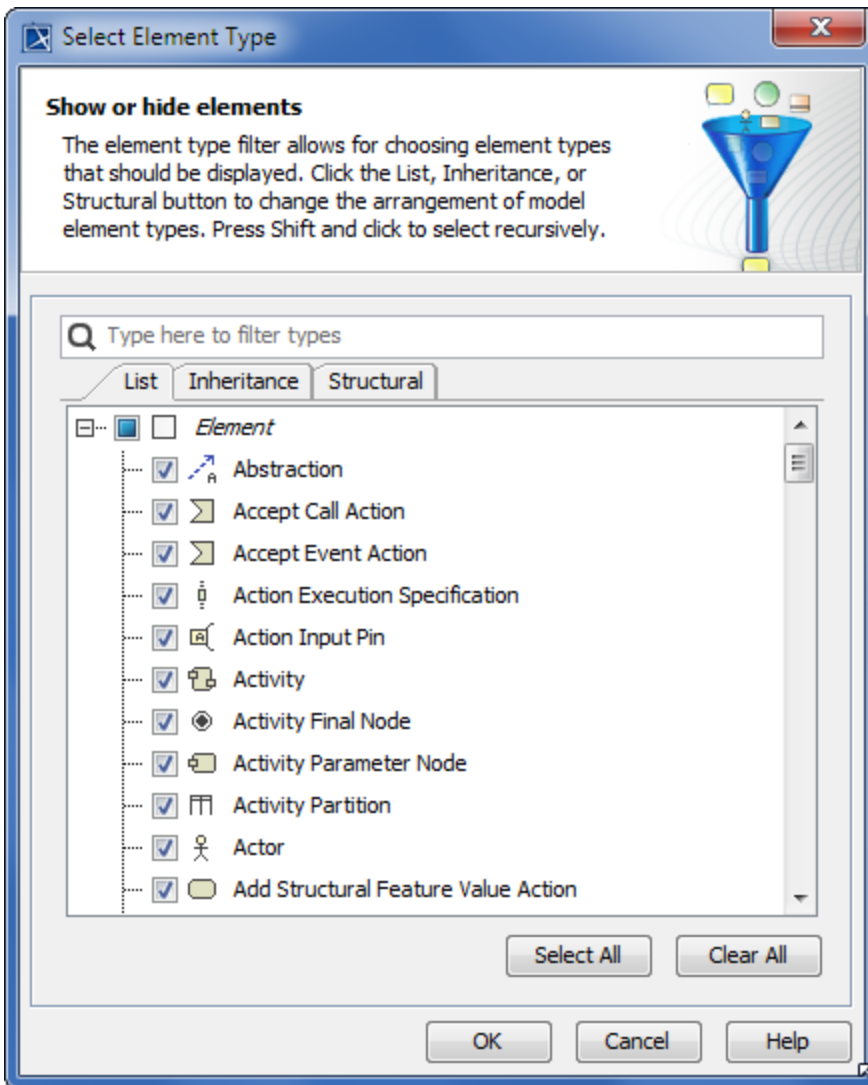
The modeling tool filtering mechanism allows filtering types of model elements in particular lists. For example, you can filter the types of model elements that are displayed in the Model Browser, or you can select them when searching.

To filter the types of the model elements that are displayed in the **Containment** tab


1. In the Model Browser, open the **Containment** tab (in case it was closed or another tab was open).
2. Click  and select **Filter**.



The **Select Element Type** dialog opens.

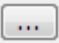


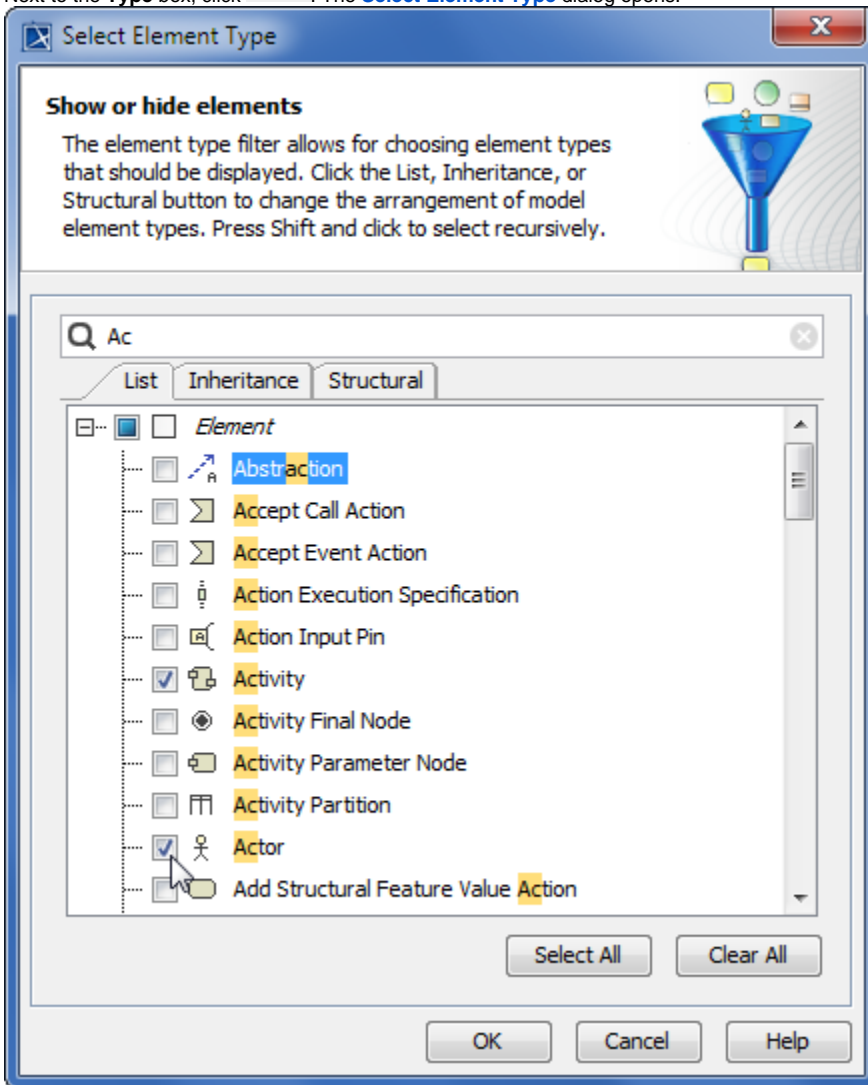
3. Do one of the following:
  - Click to clear the check box next to the model element type, which you do not want to be displayed in the **Containment** tab.
  - Click to select the check box next to the model element type, which you want to be displayed in the **Containment** tab.
4. Click **OK**. Items in the **Containment** tab are now filtered.

 Elements in the **Containment** tab are displayed in hierarchical order. If you clear the *Model* check box, no elements will be displayed in the **Containment** tab. The same is valid for all element types—if you clear the check box next to the type of element that has inner elements in the Model Browser, you won't be able to see these inner elements.

To filter the types of model elements when [searching](#)

1. From the **Edit** main menu, select **Find**. The **Find** dialog opens.

2. Next to the **Type** box, click . The **Select Element Type** dialog opens.



3. Click to select the check box of the model element type that you want to search for.  
4. Click **OK**. You are now back to the **Find** dialog then click **Find**. The **Search Results** tab opens in the Model Browser.

#### Related page

- [Selecting element types](#)