

Starting Model Merge

On this page

- [Model merge for Teamwork Cloud](#)
- [Model merge for Teamwork server](#)
- [Local model merge](#)

Start the merge using either of the following:

- From **Collaborate > Merge From**:

You can apply this method of starting a merge exclusively to Teamwork server and Teamwork Cloud projects. For Teamwork Cloud projects, you do not need to specify the ancestor; it will be instantly identified after the source is selected. For Teamwork server projects, the 3-way merge will be applied if you select project versions from different branches. Please note that the 2-way merge will be applied if you select an older version from the same branch or trunk.

- From **Tools > Project Merge**.

You can apply this method of starting a merge to both local and server projects, although used projects can be included in a merge only for server projects. You must specify both the source and the ancestor, and manually choose the 3-way or 2-way merge.



- For Teamwork Cloud projects, the modeling tool automatically applies the 3-way merge, as a merge is only available between project versions



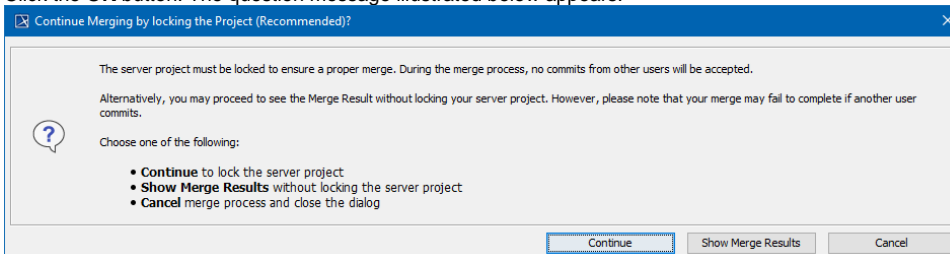
Conflicting changes detected during merge are automatically resolved by accepting changes either from the source or the target version. To specify a contributor, go to **Options > Environment > General** and then check **Automatically Resolve Conflicts by Choosing**, select either **Target** or **Source**, and merging activities.

Model merge for Teamwork Cloud

When the project is on the Teamwork Cloud server, other users will not be able to commit project changes to the server, as it will be unavailable.

To start a merge of the from **Collaborate > Merge From**


1. Open a server project that will be the [target](#).
2. From the **Collaborate** menu, select **Merge From**.
3. In the opened dialog, select a server project that will be the [source](#).
4. Click the **OK** button. The question message illustrated below appears.

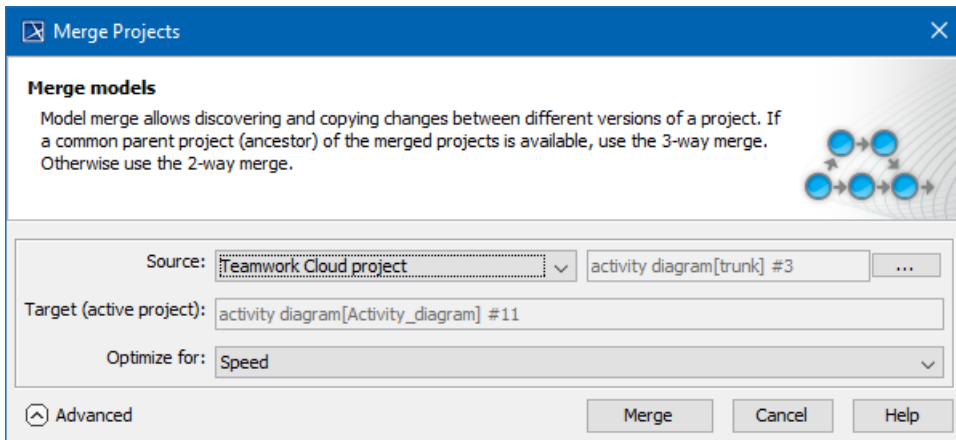


5. Do one of the following:
 - Click **Continue** to lock the server project. Other users will not be able to commit changes.
 - Click **Show Merge Results** to proceed directly to the Merge Results, without locking the server project.
 - Click **Cancel** merge process and close the dialog.
6. The project merge will start. If changes are found, the **Merge** window will open.
7. Proceed to [Analyzing and managing merge results](#).

To start merge from **Tools > Project Merge**

1. Open a project that will be the [target](#).
2. From the **Tools** menu, select **Project Merge**. The **Merge Projects** dialog will open within the active project selected as the target.
3. Select a project that will be the [source](#).
4. Click the **Advanced** button to see more merge options. Otherwise, go to [step #6](#).
5. In the **Optimize for** drop-down list, select either:
 - **Speed**, to merge the projects faster. This will require more memory.
 - **Memory**, to decrease memory usage while merging the projects if your computer does not have enough memory. This will use less memory but at the same time will slow down the merge procedure when the project has many changes in diagrams. It will not include the differing diagrams/elements count. If you need that information, select optimize for **Speed**.


 You can also specify the **Optimize for** option in the **Environment Options** dialog. Find this option under the **Merge and Compare** category in the **General** options group.




6. Click the **Merge** button. The question message illustrated in the previous section will appear.
7. Do one of the following:
 - Click **Continue** to lock the server project and continue the merge process. Other users will not be able to commit changes.
 - Click **Show Merge Results** to proceed directly to the Merge Results.
8. The project merge will start. If changes are found, the **Merge** window will open. Proceed to [Analyzing and managing merge results](#).

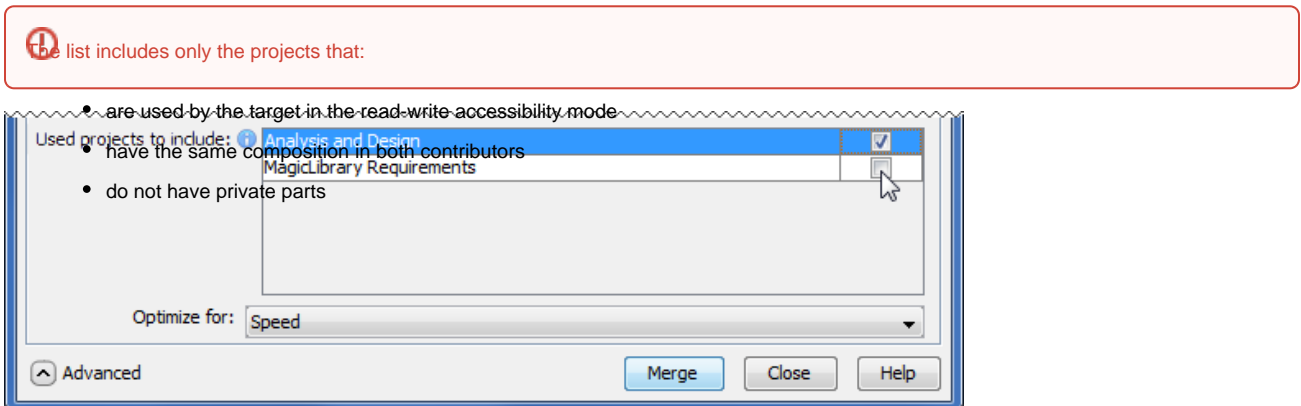
Model merge for Teamwork server

To start a merge from **Collaborate > Merge From**

1. Open a server project that will be the [target](#).
2. From the **Collaborate** menu, select **Merge From**.
3. In the opened dialog, select a server project that will be the [source](#).
4. In the same dialog, click the  **Advanced** button to see more merge options. Otherwise, go to [step #7](#).
5. In the **Optimize for** drop-down list, select either:
 - **Speed**, to merge the projects faster. This will require more memory.
 - **Memory**, to decrease memory usage while merging the projects if your computer does not have enough memory. This will use less memory but at the same time will slow down the merge procedure when the project has many changes in diagrams. It will not include the differing diagrams/elements count. If you need that information, select optimize for **Speed**.

 You can also specify the **Optimize for** option in the **Environment Options** dialog. Find this option under the **Merge** category in the **General** options group.

6. In the **Used projects to include** list, select the used projects of the target you want to merge with the appropriate used projects of the selected source. To select a used project, click the check box next to the used project name (see the following figure).





7. Click the **Merge** button. The project merge will start. If changes are found, the **Merge** window will open. Proceed to [Analyzing and managing merge results](#).

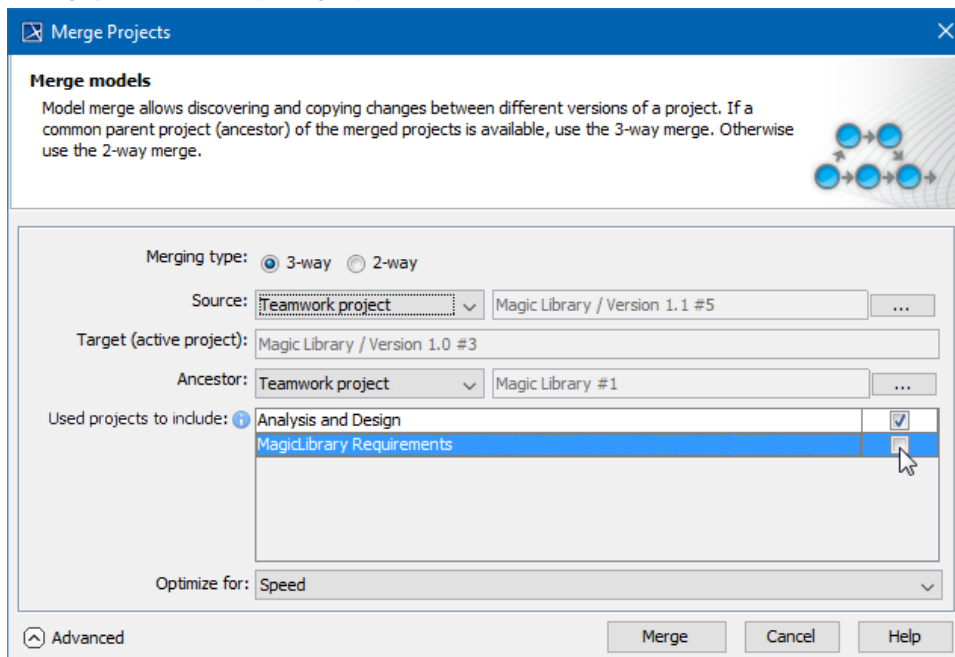
To start merge from **Tools > Project Merge**

1. Open a project that will be the [target](#) .
2. From the **Tools** menu, select **Project Merge**. The **Merge Projects** dialog will open within the active project selected as the target.
3. Select the type of merge.

 Learn about 3-way and 2-way merge in [Choosing merge type](#).

4. Select a project that will be the [source](#) .
5. If you selected 3-way merge, choose a project that will be the ancestor.
6. Click the  **Advanced** button to see more merge options. Otherwise, go to [step #9](#) .
7. In the **Optimize for** drop-down list, select either:
 - **Speed**, to merge the projects faster. This will require more memory.
 - **Memory**, to decrease memory usage while merging the projects if your computer does not have enough memory. This will use less memory but at the same time will slow down the merge procedure when the project has many changes in diagrams. It will not include the differing diagrams/elements count. If you need that information, select optimize for **Speed**.

 You can also specify the **Optimize for** option in the **Environment Options** dialog. Find this option under the **Merge and Compare** category in the **General** options group.



8. In the **Used projects to include** list, select the used projects of the target you want to merge with the appropriate used projects of the selected source. To select a used project, click the check box next to the used project name (see the following figure).

 The list is available only for server projects and includes only the projects that:

9. Click the **Merge** button. The project merge will start. If changes are found, the **Merge** window will open. Proceed to [Analyzing and managing merge results](#).


Local model merge


To start merge from **Tools > Project Merge**

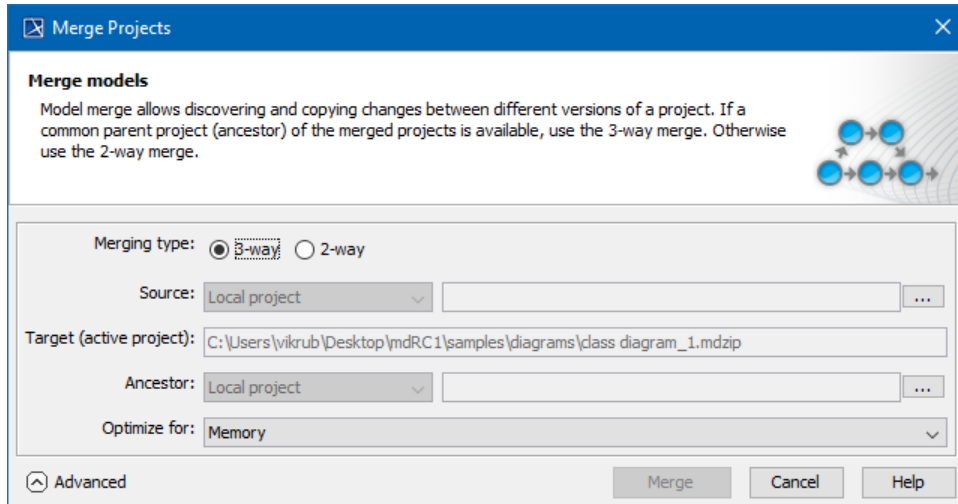
1. Open a project that will be the [target](#) .
2. From the **Tools** menu, select **Project Merge**. The **Merge Projects** dialog will open within the active project selected as the target.
3. Select the type of merge.

 Learn about 3-way and 2-way merge in [Choosing merge type](#) .

4. Select a project that will be the [source](#).

5. If you selected 3-way merge, choose a project that will be the ancestor.
6. Click the  **Advanced** button to see more merge options. Otherwise, go to [step #8](#).
7. In the **Optimize for** drop-down list, select either:
 - **Speed**, to merge the projects faster. This will require more memory.
 - **Memory**, to decrease memory usage while merging the projects if your computer does not have enough memory. This will use less memory but at the same time will slow down the merge procedure when the project has many changes in diagrams. It will not include the differing diagrams/elements count. If you need that information, select optimize for **Speed**.

 You can also specify the **Optimize for** option in the **Environment Options** dialog. Find this option under the **Merge and Compare** category in the **General** options group.



8. Click the **Merge** button. The project merge will start. If changes are found, the **Merge** window will open. Proceed to [Analyzing and managing merge results](#).

Related pages

- [Understanding merge types](#)
- [Understanding change concept](#)
- [Preparing for merge](#)
- [Analyzing and managing merge results](#)
- [Finishing and canceling merge](#)