

Spell Checking as you type

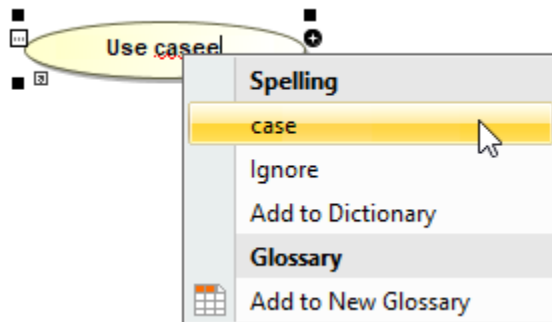
Spell Checker checks if a word is correct as you type. If the word is incorrect, it is underlined with a red wavy line. Right-clicking the underlined word brings up a shortcut menu with suggested edits and gives you the option to add the word to the dictionary or custom glossary.

Spell checking as you type is performed in the following locations in a modeling tool:

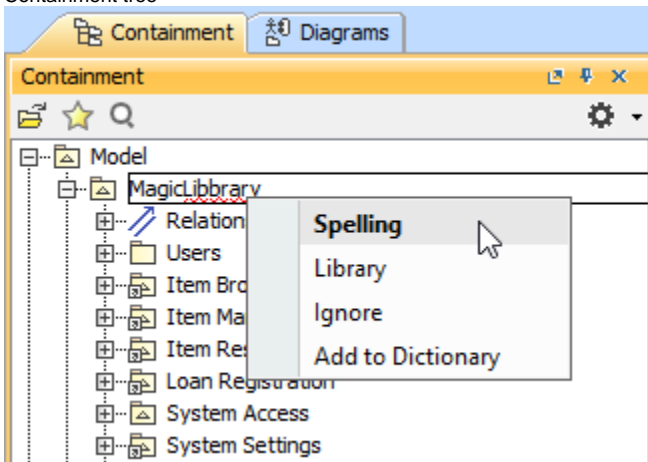
- symbol names on a diagram pane,
- for properties in the [Specification windows](#),
- in the [Documentation tab](#),
- in the [Containment tree](#),
- In various locations on log messages, names, typing and comment boxes.

Right-click the underlined word to invoke the shortcut menu in the following locations:

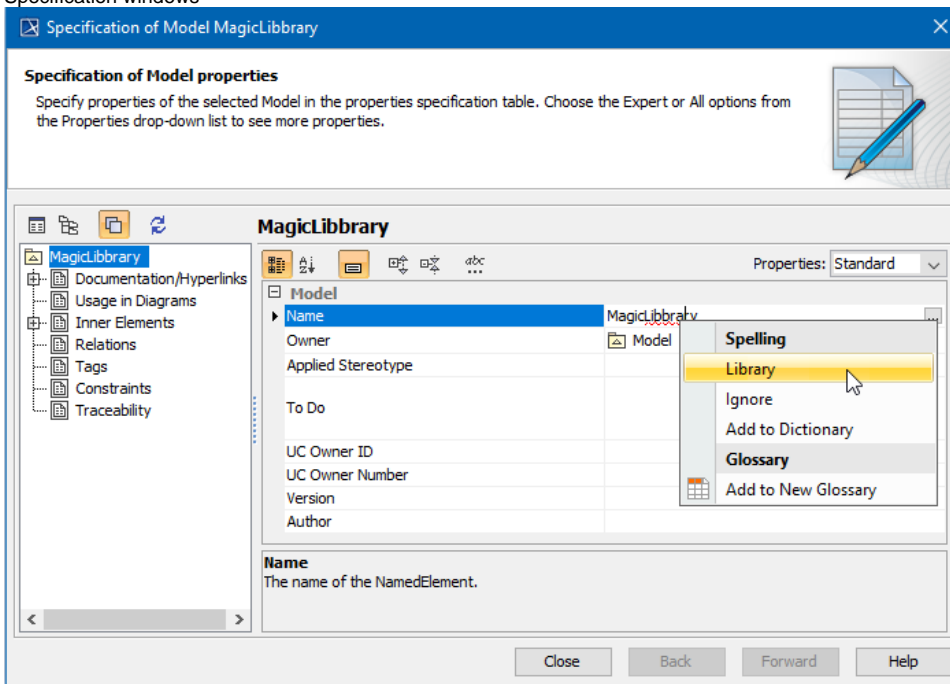
- Diagram pane



- Containment tree



- Specification windows



Correct the spelling error

Do one of the following:

- An incorrect word can be changed by typing or by selecting provided suggestion that is always correct syntactically, but not always correct semantically.
- The **Ignore** command. If you select **Ignore**, the incorrectly spelled word is treated as correct for this time but will be considered to be incorrectly spelled in other cases.
- The **Add to dictionary** command. If you select **Add to dictionary**, the incorrect word will be added to a custom dictionary. Next time it will not be treated as incorrect.
- The **Add to New Glossary** command. Select **Add to New Glossary** to create a new [glossary](#) of terms.



Note

Incorrectly spelled words are underlined only in the edit mode of a particular component. If you turn edit mode off, the underline disappears and vice versa.

Related Pages:

- [Spell Checking as you type](#)
- [Spell checking for the entire project or a selected scope](#)
- [Setting the spell checking options](#)
- [Defining properties of the customized element to be spell checked](#)