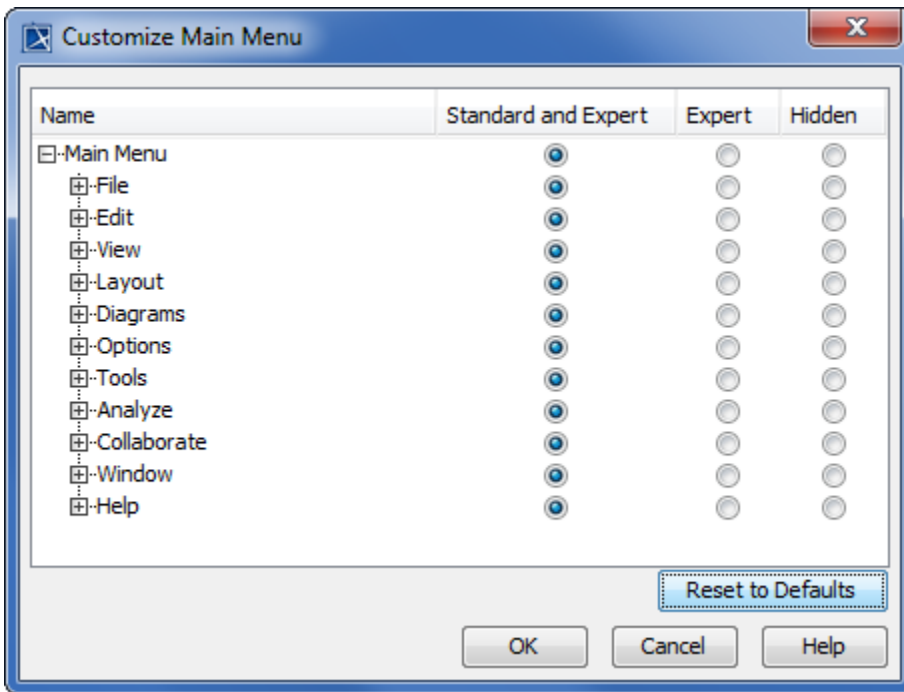


Dialog for customizing selected modeling tool area

The **Customize <Area>** dialog enables you to customize your own environment, from simple to complex or vice versa. You choose which menus and commands should be displayed and which should be hidden. Customization allows you to make your own working environment.

The name of this dialog depends on the area you select. For example, if you select Main Menu, the dialog's name is **Customize Main Menu**.



In the open dialog, select each environment element individually and choose the mode this element should be available in. There are three modes:

- **Standard and Expert.** The selected element will be visible in the **Standard** as well as in the **Expert** mode. The Standard mode is less complicated and is meant for standard users.
- **Expert.** The selected elements will be visible only in the Expert mode.
- **Hidden.** The selected element will not be shown in any mode.

To assign an element to the mode

1. Select an element.
2. Click the radio button under the desired mode.