


Logging into TWCloud server

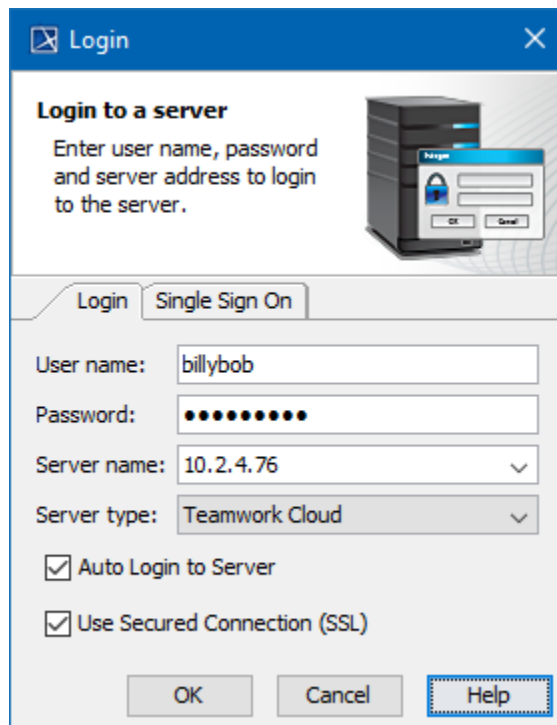
Before logging in to any of No Magic's servers, you must:

- Have a user account on the server.
- Be sure the server is running.
- Ensure the server and the client application use the same Java version. Small Java version updates may differ.

 The server Java version 1.8.0_45 will work with the client Java version 1.8.0_51.

To log in to a server

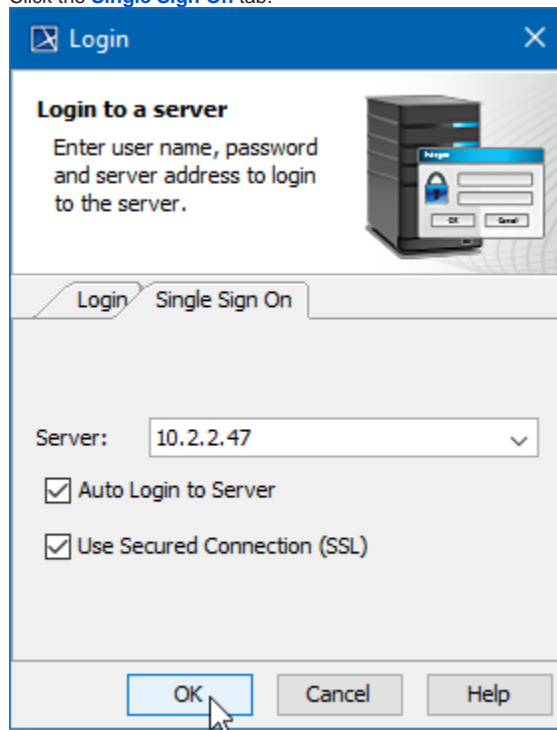
1. From the **Collaborate** menu, select **Login**. The **Login** dialog opens.
2. Login to a server:
 - To login using "username/password" authentication:
 - i. Click the **Login** tab.
 - ii. Type your user name and password.



The screenshot shows a Windows-style dialog box titled "Login". It has a blue header bar with a close button (X) on the right. The main area has a light gray background with a server rack icon on the right. The text "Login to a server" is followed by "Enter user name, password and server address to login to the server." Below this are two tabs: "Login" (selected) and "Single Sign On". The "Login" tab contains four input fields: "User name:" with the text "billybob", "Password:" with masked characters, "Server name:" with the text "10.2.4.76" and a dropdown arrow, and "Server type:" with the text "Teamwork Cloud" and a dropdown arrow. There are two checked checkboxes: "Auto Login to Server" and "Use Secured Connection (SSL)". At the bottom are three buttons: "OK", "Cancel", and "Help" (which is highlighted with a dashed border).

- For users having a single ID and password for multiple software systems (valid only for Teamwork Cloud Server):

- i. Click the **Single Sign On** tab.



3. Provide the server name (address) and select server type. If you need to specify a server port, type <server name> : <port number>, for example 10.2.2.47:3579.

For Teamwork Cloud Server users

If a **Single Sign On** property is selected to login, the Teamwork Cloud Server is automatically selected as a type.

4. If you want the client application to remember your credentials and automatically log in to the server next time upon starting the client application, select the **Auto Login to Server** check box.
5. If you need to connect to the server using the SSL connection, select the **Use Secured Connection (SSL)** check box.

The SSL connection must be established on both the server and the client side.

6. Click **OK**.
7. Wait while you are connected to the server, and then you can start performing collaborative tasks.

To log out of the server

- From the **Collaborate** menu, select **Logout**.