

Message Flow

Description

A Message Flow is used to show the flow of messages between two participants who are prepared to send and receive them.



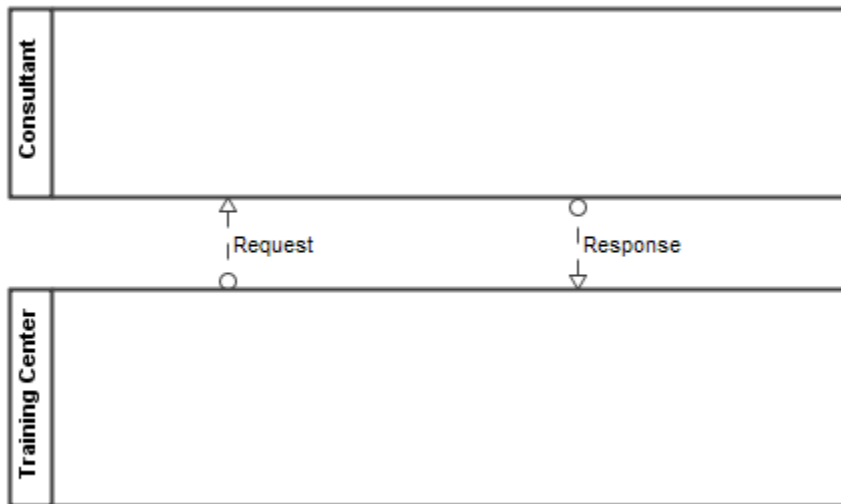
- A Message Flow must connect separate Pools. It can be connected to the pool boundary or an element inside the pool.

- A Message Flow cannot connect two elements in the same Pool.

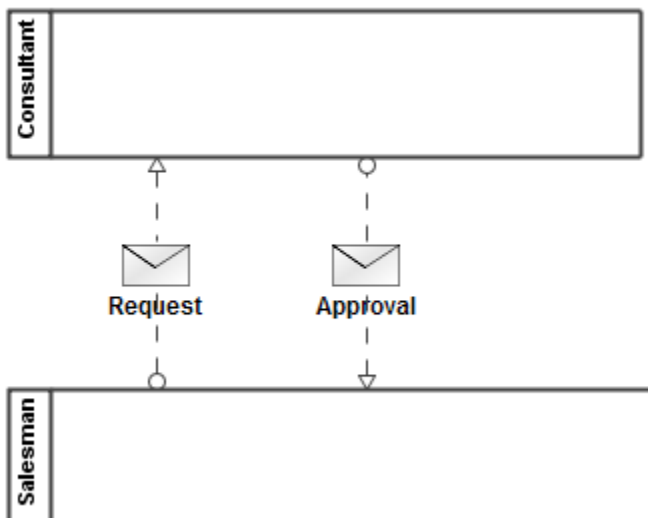
Messages that are sent by a Message Flow can be displayed on a diagram in two ways:

- overlapping the Message Flow
- associated with the Message Flow

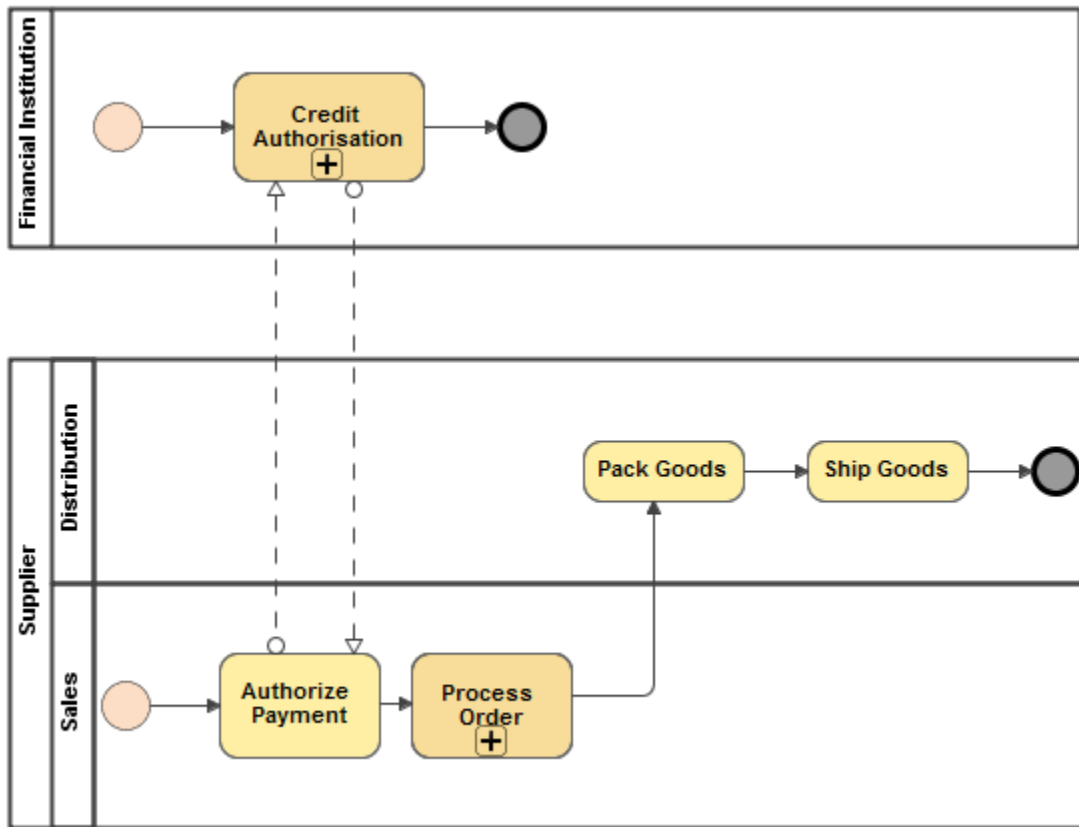
However, they can also be hidden.



Message Flows between two pools.



Messages overlapping Message Flows



Message Flows between Pools Inner elements

Related element

- [Pool and Lane](#)

Related diagrams

- [BPMN Collaboration Diagram](#)
- [BPMN Process Diagram](#)

Related procedure

- [Creating and Using a Sequence Flow](#)