

# Creating Pr diagram

To create a Pr diagram

- 1 [Create new Version Of Configuration](#)
- 2 [Define the resource for the Version Of Configuration](#)
- 3 [Specify Actual Project Milestones of the resource](#)

## Create new Version Of Configuration

To create new Version Of Configuration in Pr diagram

1. Click the **Add New** button. New Version of Configuration is created.
2. Type its name.

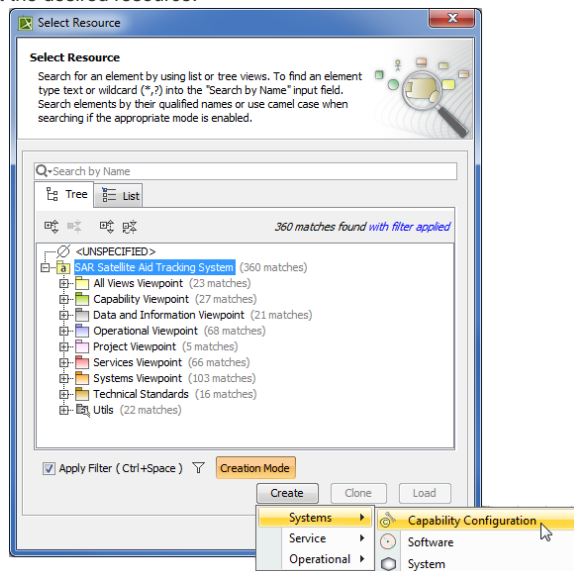
## Define the resource for the Version Of Configuration

To define the resource for the Version Of Configuration

1. Right-click the Version Of Configuration in the diagram pane and select **Resource**.
2. In the **Select Resource** dialog do one of the following:
  - Select an existing resource that has milestones defined.
  - Create new resource (described in the following procedure).

To create new resource for the Version Of Configuration

1. In the **Select Resource** dialog switch on the **Creation Mode**.
2. Select package where you want to create a resource.
3. Click the **Create** button, choose a resource category **Systems**, **Service**, or **Operational**, and select the desired resource.



4. In the Specification window of the newly created resource type its name.

## Specify Actual Project Milestones of the resource

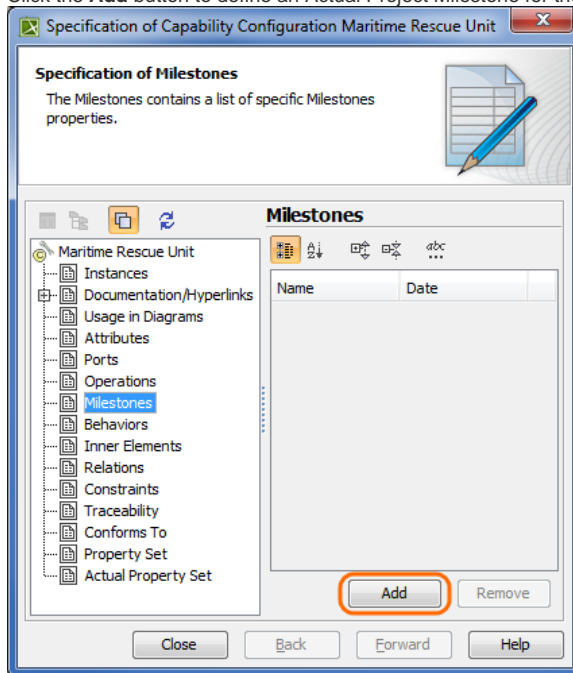


Each resource must have two Actual Project Milestone kinds defined:

- Increment Milestone (defines the start of a period).
- Out Of Service Milestone (defines the end of a period).

To specify Actual Project Milestones of the resource

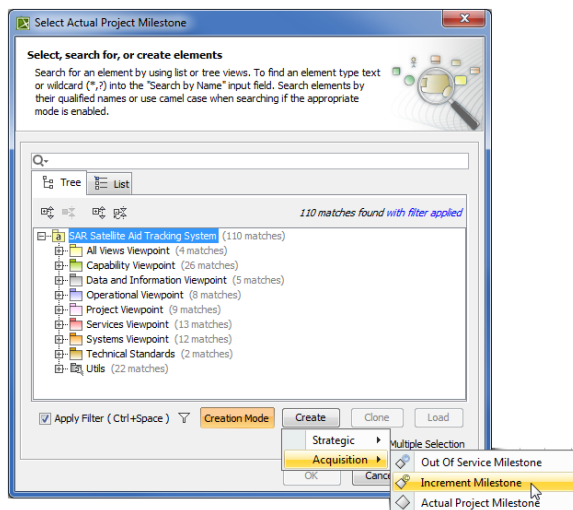
1. On the left of the resource Specification window, select the **Milestones** property group.
2. Click the **Add** button to define an Actual Project Milestone for the resource.



3. In the **Select Actual Project Milestone** dialog do one of the following:
  - Select an existing Actual Project Milestone.
  - Create new Actual Project Milestone (described in the following procedure).
4. Click **Close** to close the Specification window of an Actual Project Milestone.

To create new Actual Project Milestone of the resource

1. In the **Select Actual Project Milestone** dialog switch on the **Creation Mode**.
2. Select package where you want to create an Actual Project Milestone.
3. Click the **Create** button, choose an Actual Project Milestone category **Strategic**, or **Acquisition**, and select the desired milestone kind.



4. In the Specification window of the newly created milestone specify two properties:
  - **Name**. Type a name of the the milestone.

- **Date.** Select the Date property value cell and click

**? Unknown Attachment**

. In the **Date and Time Settings** dialog choose a date and click **OK**.

**Specification of Increment Milestone Start Phase 1**

**Specification of Increment Milestone properties**  
Specify properties of the selected Increment Milestone in the properties specification table. Choose the Expert or All options from the Properties drop-down list to see more properties.

**Start Phase 1**

Documentation/Hyperlinks  
Usage in Diagrams  
Project Status  
Slots  
Inner Elements  
Relations  
Conforms To  
Property Set  
Actual Property Set

Increment Milestone

Name	Start Phase 1
Type	
Date	2015-10-07T18:21:13+02:00
Resource	
Description	
Actual Property Set	
Property Set	
Conforms To	
Owner	SAR Satellite Aid Tracking System
Specification	
Image	
To Do	
Start Boundary Type	
End Boundary Type	
URI	
Identifier	

Type here to filter properties

Close Back Forward Help