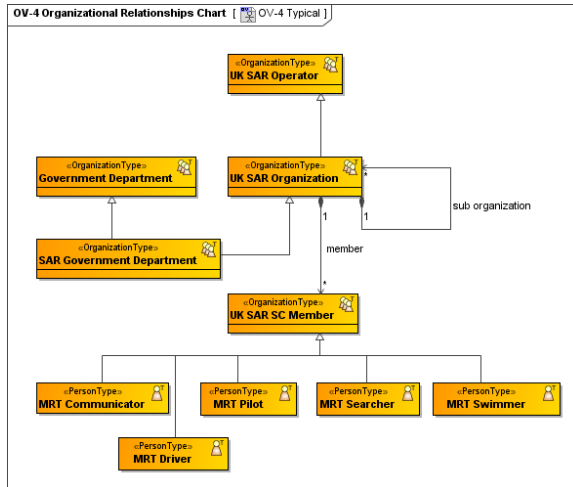


Instantiating Structures

Use [Automatic Instantiation wizard](#) to instantiate any typical structure of UPDM architecture automatically.

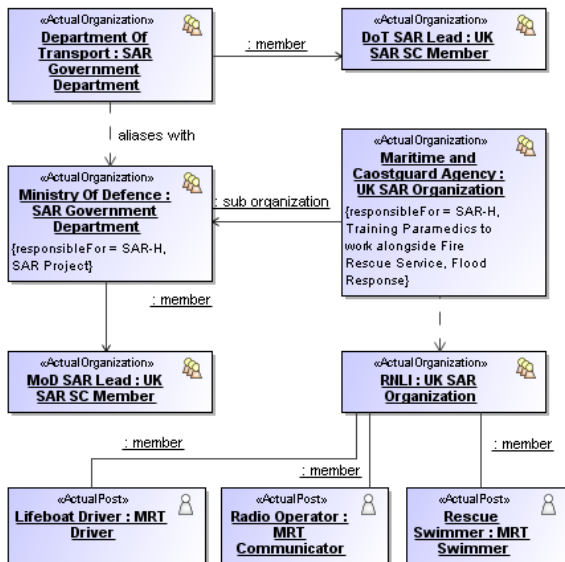
To open the [Automatic Instantiation wizard](#)

1. Select any number of instantiable UPDM elements and right-click them.
2. On the shortcut menu, choose **Tools > Create Instance**.
The **Automatic Instantiation** wizard opens.



To instantiate the proposed typical structure

1. Select all typical classes you want to instantiate in a diagram pane or in the Model Browser.
2. Right-click on the selected typical UPDM elements and select **Tools > Create Instance**.
3. Follow the steps of the [Automatic Instantiation wizard](#).
4. Click **Finish** when you are done.
A new **OV-4 Actual** diagram is created.



For instantiable UPDM elements corresponding actual elements are created. For example, by instantiating Organization results in Actual Organization and etc. For all other structural elements UML Instance Specifications are created.

Typical UPDM element	Actual UPDM element
Project Type	Project (DoDAF), Actual Project (MODAF / NAF)
Project Milestone	Actual Project Milestone
Project Theme	Project Status
Project Milestone Role	Actual Project Milestone Role
Organization	Actual Organization
Organization Type	Organization
Sub Organization (Resource Role typed by and owned by Organization Type (DoDAF) or Organization (MODAF / NAF))	Actual Organization Role
Person Type	Individual Person Role
Post	Actual Post
Post Role (Resource Role typed by Person Type (DoDAF) or Post (MODAF / NAF) and owned by Organization Type (DoDAF) or Organization (MODAF / NAF)).	Actual Organization Role
Person	Actual Person
Measurement Set	Actual Measurement Set
Measure Type	Measure
Measurement	Actual Measurement
Geo Political Extent Type	Geo Political Extent
Location Type	Actual Location
Location	Actual Location
Capability Configuration	Fielded Capability