

SV-2 Systems Internal Resource Flow Description

Description

A SV-2 specifies the internal System Resource Flows between Systems and may also list the protocol stacks used in connections.

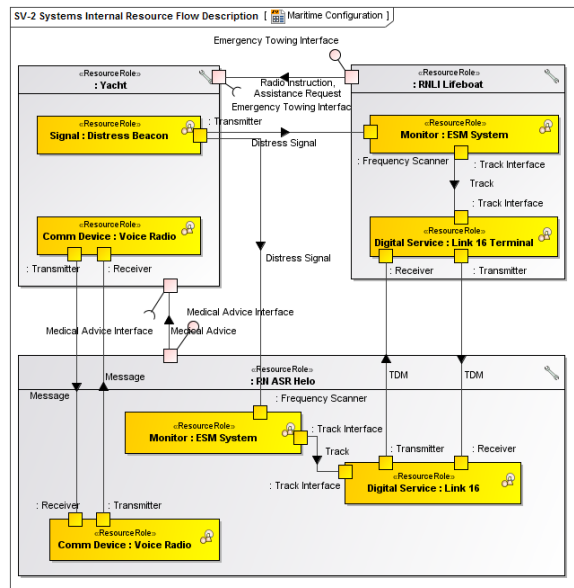
Implementation

SV-2 can be represented using:

- A SV-2 diagram which is based on the UML Class diagram.
- A SV-2 diagram which is based on the UML Composite Structure diagram.
- A UML Class diagram.
- A UML Composite Structure diagram.
- A SysML Block Definition diagram.
- A SysML Internal Block diagram.

Related procedures

- [Creating SV-2 Internal diagram](#)
- [Creating Resource Interaction in SV-2 Internal diagram](#)



Any protocol referred to in a SV-2 diagram needs to be defined in the [StdV-1 Standards Profile](#).

Related elements

- Resource Role
- Resource Interface
- Resource Connector
- Resource Port
- Property