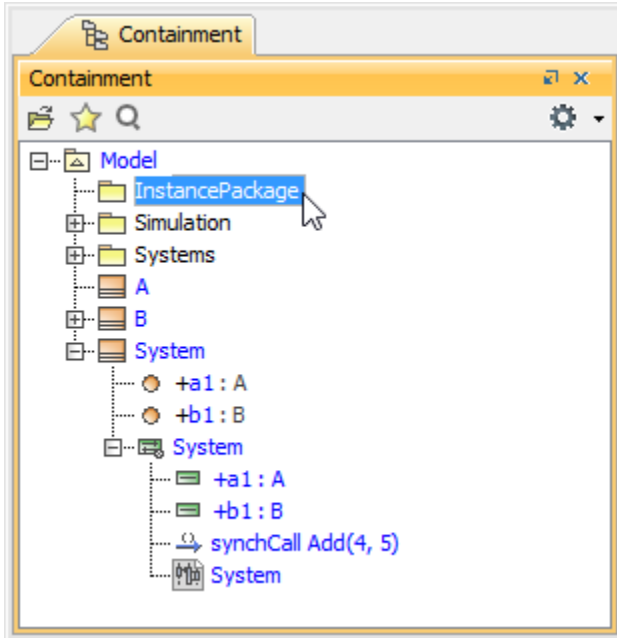


Executing an interaction model

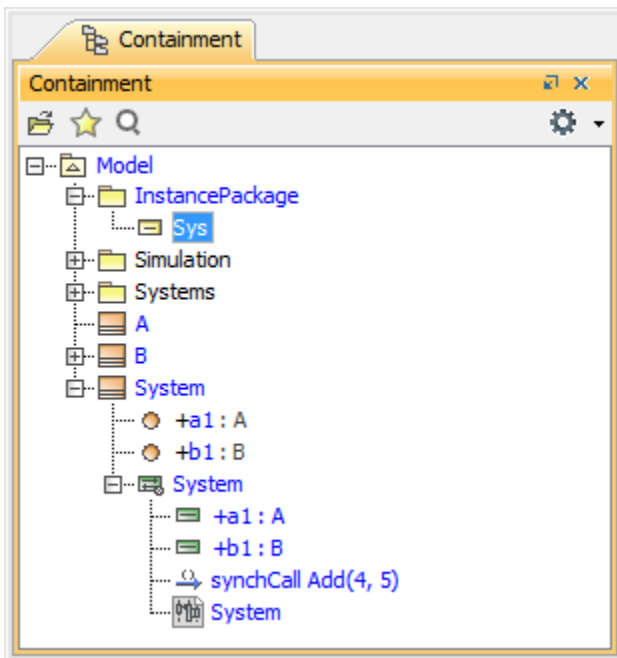
This section illustrates the steps to simulate the interaction model mentioned in section [Creating a Model for Activity Simulation](#).


To simulate the interaction model in section [Creating a model for Activity simulation](#)

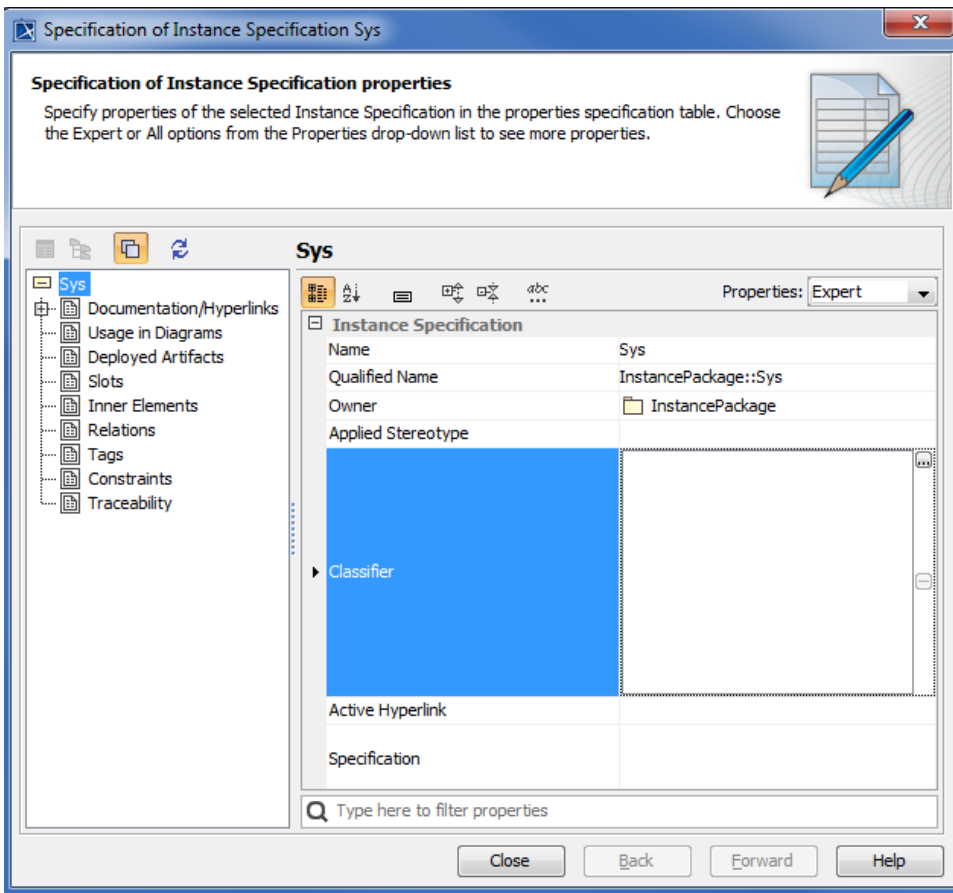
1. Right-click the package **Model** in the containment browser and select **Create Element > Package**. Name the package, for example, InstancePackage. The following figure shows the Containment tree containing the objects within its hierarchy.



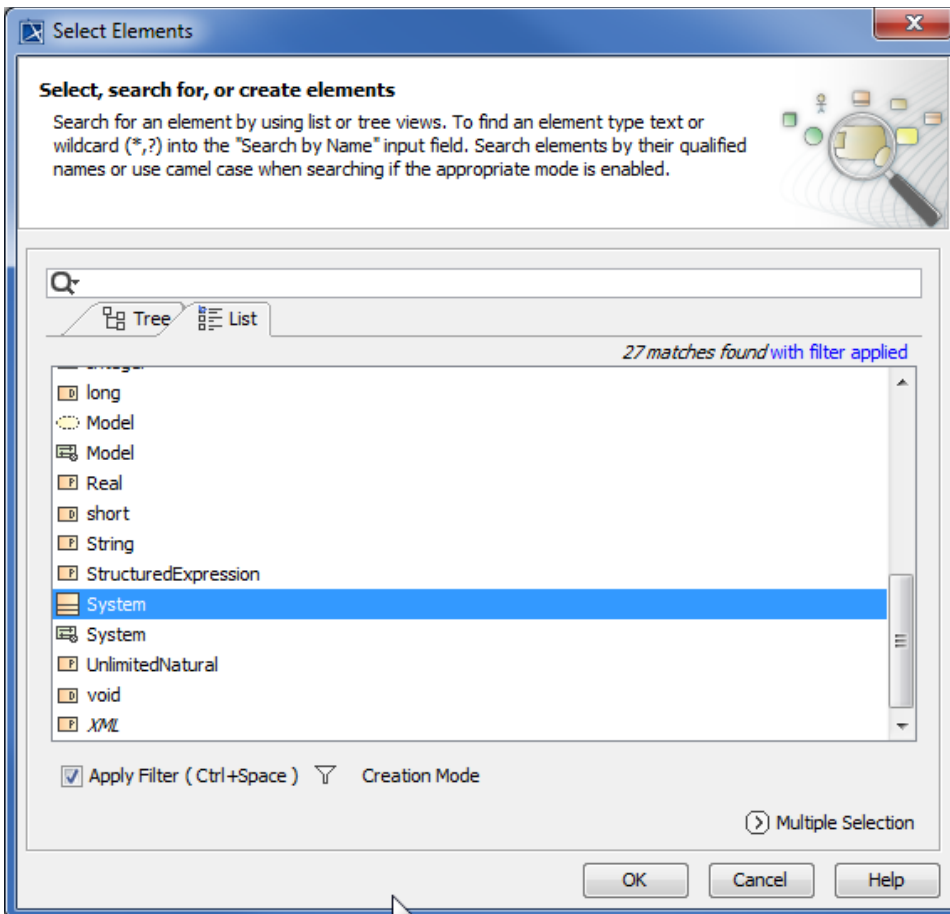
2. Right-click the **InstancePackage** and select **Create Element > Instance Specification**. Name the instance specification, for example, Sys. The following figure shows the creation of an InstancePackage element from its shortcut menu..



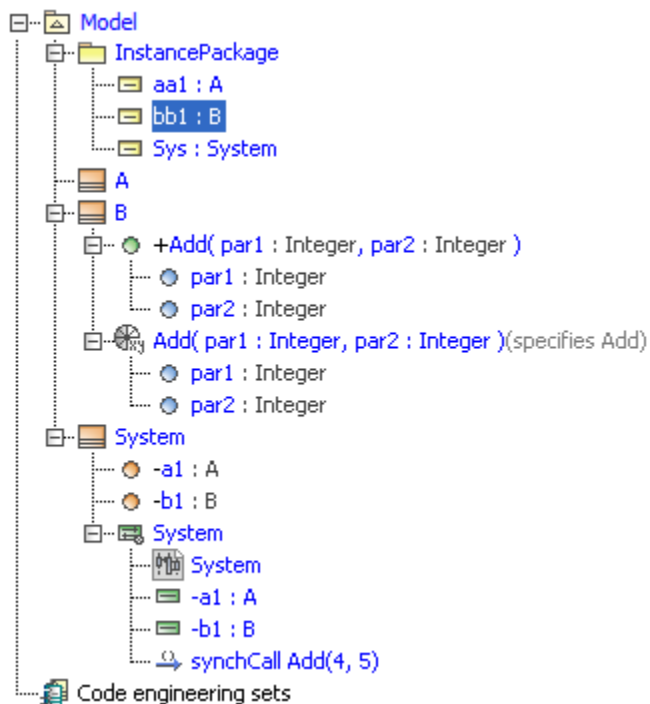
3. Right-click the instance specification **Sys** and select **Specification** to open the specification dialog.
4. Click the  browse button in the **Classifier** row to open the **Select Elements** dialog (see the first figure below) and select class **System** as the classifier of the instance specification **Sys** (see the second figure below).



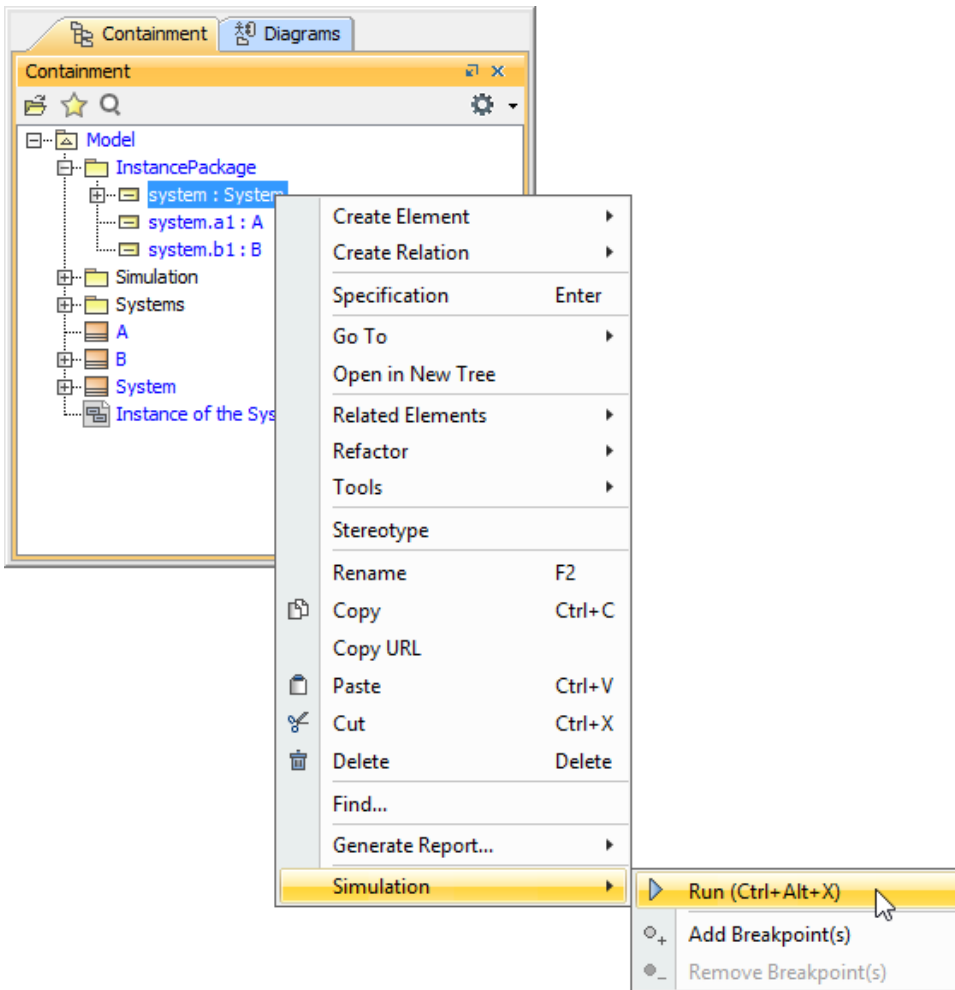
The following figure shows the elements that can be selected in the **Select Elements** dialog.



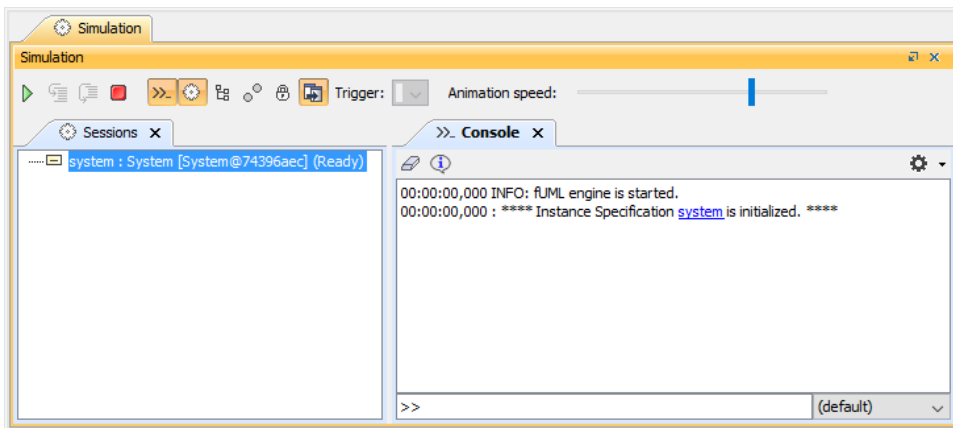
5. Repeat steps 2 and 3 above to create the other instance specifications named **aa1** and **bb1** of the classifiers **A** and **B** respectively. The following figure shows the Containment tree depicting objects within its hierarchy.



6. Right-click the instance specification **Sys** and select **Simulation > Run** (see the first figure below). The **Simulation** window will appear.



7. Click the **Start** button in the **Simulation** window.



The Simulation **Console** shows the results of a simulation and the constraints which have passed or failed.

