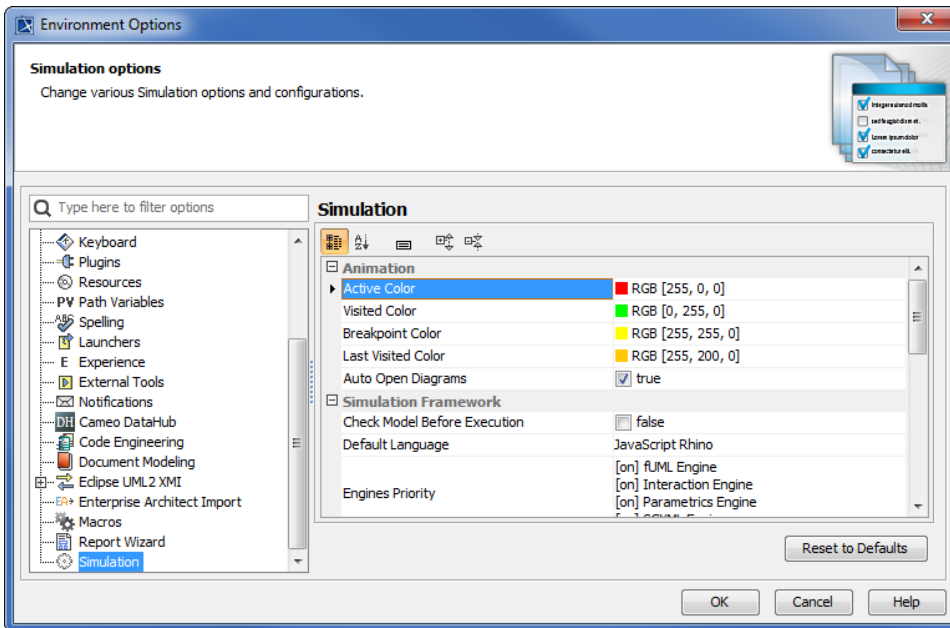


Selecting the simulation environment options

To select the model simulation options

1. Click **Options > Environment** on the main menu to open the **Environment Options** dialog.
2. Select the **Simulation** node.



3. You can customize animation colors by modifying the color that will be used to highlight elements: **Active**, **Visited**, **Breakpoint**, and **Last Visited color**. In this tutorial, we will use the default colors.
4. Go to the **Check Model Before Execution** row. If you select the check box, Cameo Simulation Toolkit will use the UML validation suite to validate the model before executing it; otherwise Cameo Simulation Toolkit will execute the model without validating it.
5. Click **OK** to close the **Environment Options** dialog.



Note

Cameo Simulation Toolkit will automatically open/switch to the diagrams containing Active Elements if the **Auto Open Diagrams** option is set to **true**. Set it to **false** if you would like to focus on just one diagram and avoid automatic diagram open/switch.