

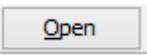
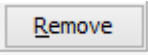
DataHub Alias Manager

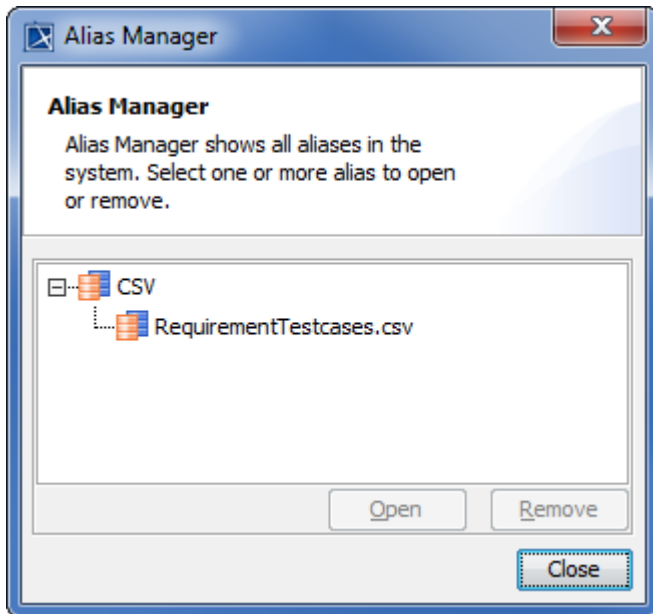
When an Alias is created, it is saved in **Alias Manager**. You can reopen or remove an Alias you have created through the **Alias Manager** dialog.

To manage an existing Alias

1. On the main menu, click **Tools > DataHub > Alias Manager**.
2. The **Alias Manager** dialog opens. Expand each driver to see all of the Aliases under each driver.

To open or remove an Alias

- Select an Alias. Click  to open the selected Alias or  to delete it.



Warning

The created Alias is displayed in **Alias Manager** only when the related Data Source is connected.