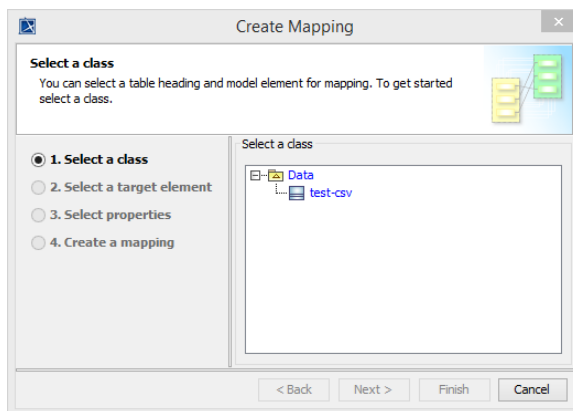
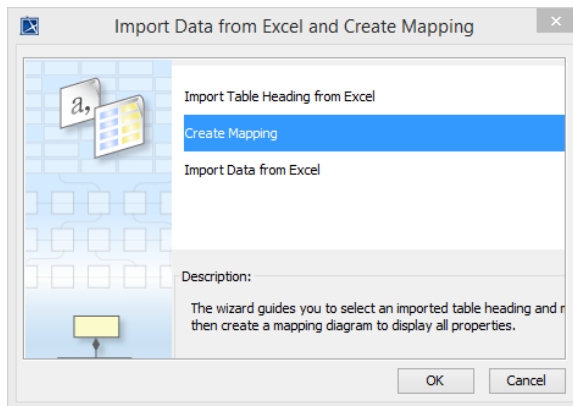


Create mapping between excel file and SysML requirement attributes

To create mapping between the Excel file contents and SysML requirements

1. Click **File > Import From > Excel/CSV File**.
2. Select the second option, **Create Mapping** as shown in the figure below. Click **OK**.

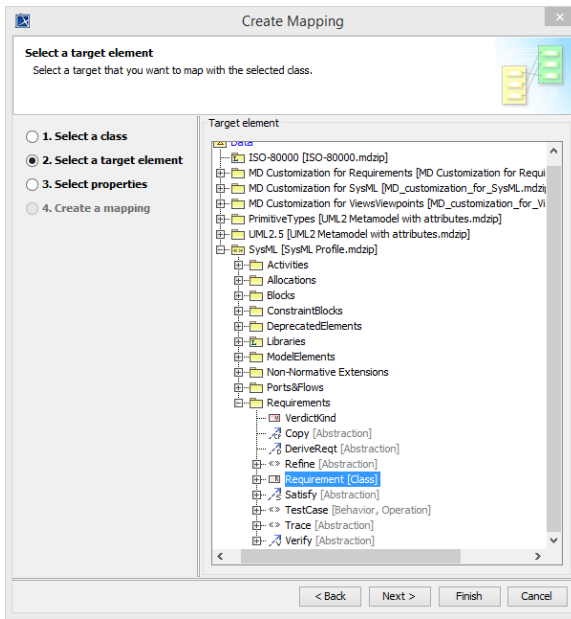


3. The **Create Mapping** wizard will open as in the figure above. Select the class from the right

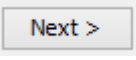
hand side pane, and click

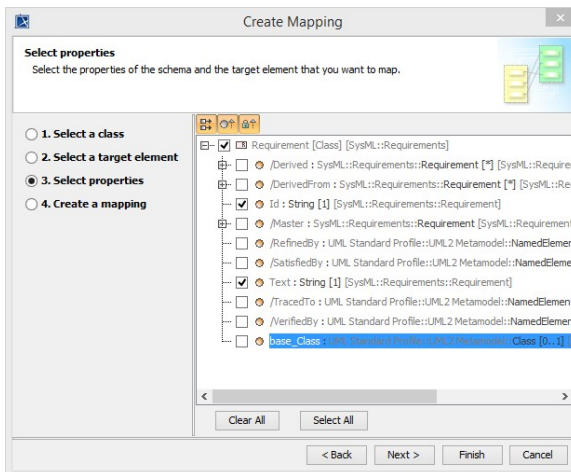
Next >

to proceed to the next step of the wizard, selecting target element.

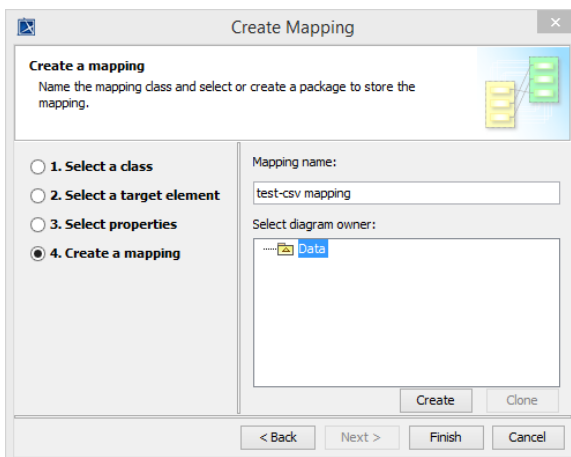


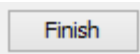
4. Select *SysML[SysMLProfile.mdzip] > Requirements > Requirement[Class]*, see figure above,

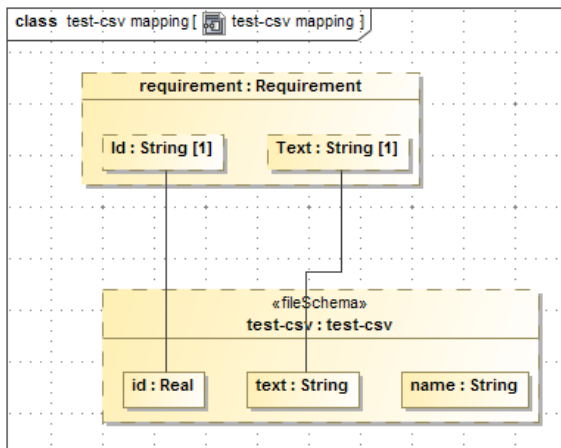
and click  to proceed to the next step of the wizard.



5. In this step of the wizard, we map the columns of the Excel file to SysML requirement properties, see Figure above. Notice, the column **name** from the Excel file has not been mapped yet, we will do that after exiting this wizard.



6. Step four of the Create Mapping wizard, see figure above, click  to exit the wizard.



7. Now, we will add a connection between the requirement object and the property **name**. Right click the requirement object and select connector, and drag and point it to the **name** property. The diagram, after adding the connector will look as in figure below.

